

NIPSNAP3A Antibody

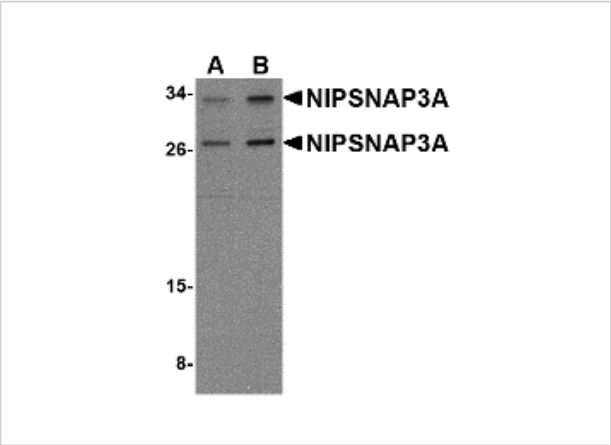
CATALOG NUMBER: 4947

Specifications

Host Species	Rabbit
Species Reactivity	Human, Mouse
Immunogen	NIPSNAP3A antibody was raised against a 16 amino acid synthetic peptide near the center of human NIPSNAP3A. The immunogen is located within amino acids 40 - 90 of NIPSNAP3A.
Conjugate	Unconjugated
Tested Applications	ELISA, IF, IHC-P, WB
User Note	Optimal dilutions for each application to be determined by the researcher.
Specificity	At least two isoforms of NIPSNAP3A are known to exist. NIPSNAP3A antibody is predicted to not cross-react with any other members of the NIPSNAP protein family.

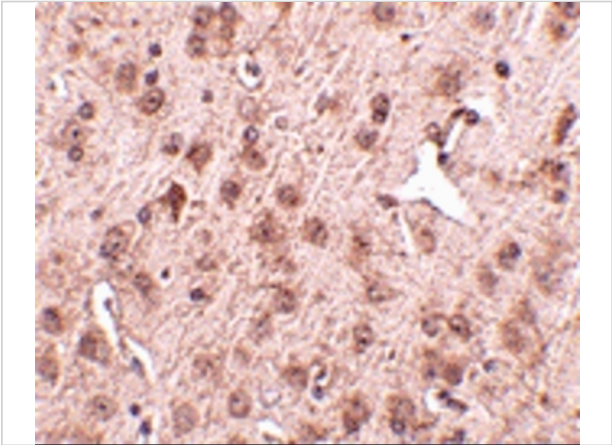
Properties

Purification	NIPSNAP3A Antibody is affinity chromatography purified via peptide column.
Clonality	Polyclonal
Isotype	IgG
Physical State	Liquid
Buffer	NIPSNAP3A Antibody is supplied in PBS containing 0.02% sodium azide.
Concentration	1 mg/mL
Storage Conditions	NIPSNAP3A antibody can be stored at 4°C for three months and -20°C, stable for up to one year. As with all antibodies care should be taken to avoid repeated freeze thaw cycles. Antibodies should not be exposed to prolonged high temperatures.



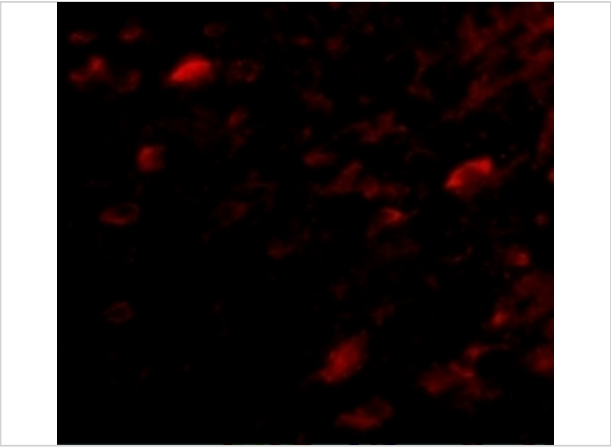
NIPSNAP3A Antibody 1

Western blot analysis of NIPSNAP3A in mouse brain tissue lysate with NIPSNAP3A antibody at (A) 0.5 and (B) 1 µg/mL.



NIPSNAP3A Antibody 2

Immunohistochemistry of NIPSNAP3A in mouse brain tissue with NIPSNAP3A antibody at 2.5 µg/mL.



NIPSNAP3A Antibody 3

Immunofluorescence of NIPSNAP3A in Mouse Brain cells with NIPSNAP3A antibody at 5 µg/mL.

Disclaimer

Disclaimer	Optimal dilutions/concentrations should be determined by the end user. The information provided is a guideline for product use. This product is for research use only.
------------	------------------------------------------------------------------------------------------------------------------------------------------------------------------------

For research use only. For additional information, visit ProSci's [Terms and Conditions Page](#).