

Rkhd4 Antibody

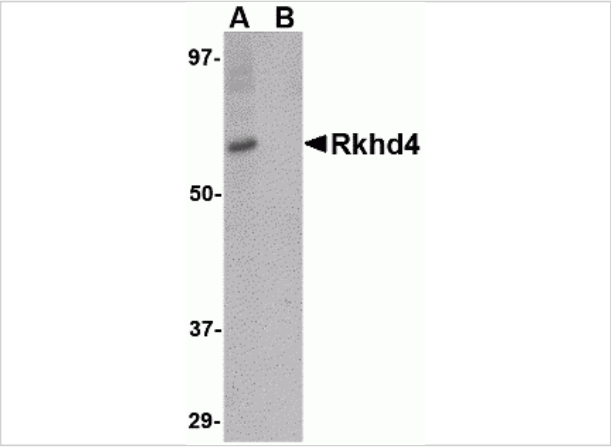
CATALOG NUMBER: 4869

Specifications

Host Species	Rabbit
Species Reactivity	Human, Mouse, Rat
Immunogen	Rkhd4 antibody was raised against a 14 amino acid synthetic peptide from near the carboxy terminus of human Rkhd4. The immunogen is located within amino acids 420 - 470 of Rkhd4.
Conjugate	Unconjugated
Tested Applications	ELISA, IF, IHC-P, WB
User Note	Optimal dilutions for each application to be determined by the researcher.

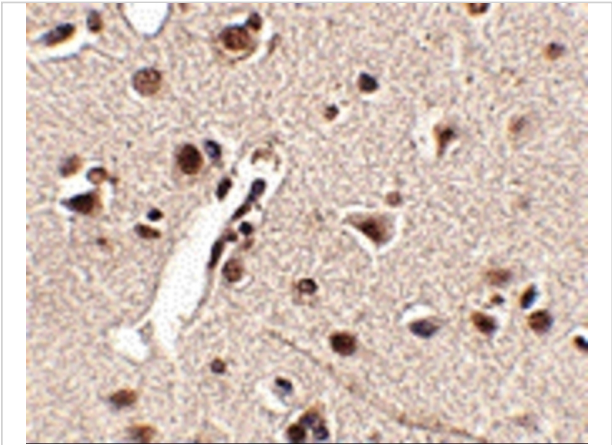
Properties

Purification	Rkhd4 Antibody is affinity chromatography purified via peptide column.
Clonality	Polyclonal
Isotype	IgG
Physical State	Liquid
Buffer	Rkhd4 Antibody is supplied in PBS containing 0.02% sodium azide.
Concentration	1 mg/mL
Storage Conditions	Rkhd4 antibody can be stored at 4°C for three months and -20°C, stable for up to one year. As with all antibodies care should be taken to avoid repeated freeze thaw cycles. Antibodies should not be exposed to prolonged high temperatures.



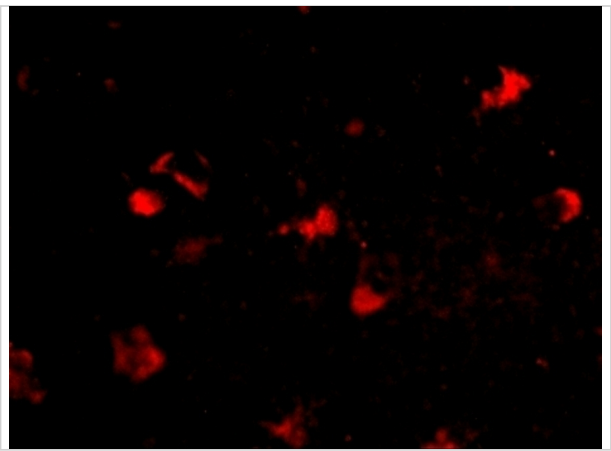
Rkhd4 Antibody 1

Western blot analysis of Rkhd4 in SK-N-SH cell lysate with Rkhd4 antibody at 1 µg/mL in (A) the absence and (B) the presence of blocking peptide.



Rkhd4 Antibody 2

Immunohistochemistry of Rkhd4 in human brain tissue with Rkhd4 antibody at 2.5 µg/mL.



Rkhd4 Antibody 3

Immunofluorescence of rkh4 in human brain tissue with rkh4 antibody at 20 µg/mL.

Disclaimer

Disclaimer	Optimal dilutions/concentrations should be determined by the end user. The information provided is a guideline for product use. This product is for research use only.
------------	--

For research use only. For additional information, visit ProSci's [Terms and Conditions Page](#).