

## Stk39 Antibody

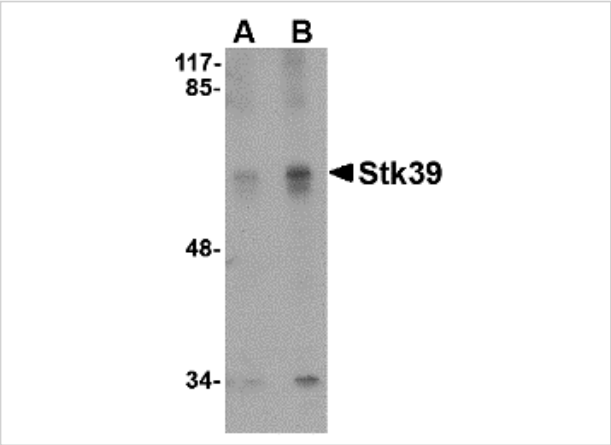
CATALOG NUMBER: 4855

### Specifications

Host Species	Rabbit
Species Reactivity	Human, Mouse
Homology	Predicted species reactivity based on immunogen sequence: Rat: (100%), Pig: (95%)
Immunogen	Stk39 antibody was raised against a 19 amino acid synthetic peptide from near the carboxy terminus of human Stk39. The immunogen is located within amino acids 450 - 500 of Stk39.
Conjugate	Unconjugated
Tested Applications	ELISA, IF, IHC-P, WB
User Note	Optimal dilutions for each application to be determined by the researcher.

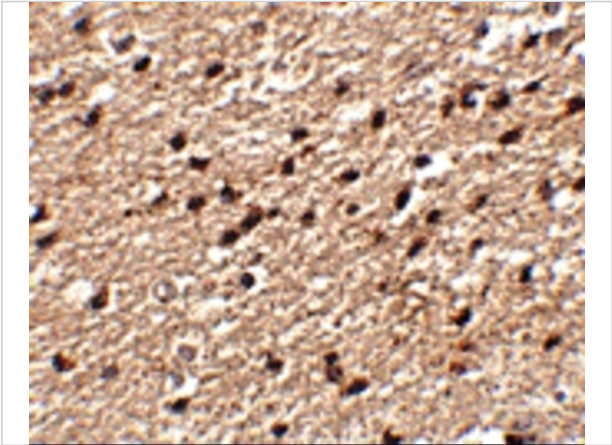
### Properties

Purification	Stk39 Antibody is affinity chromatography purified via peptide column.
Clonality	Polyclonal
Isotype	IgG
Physical State	Liquid
Buffer	Stk39 Antibody is supplied in PBS containing 0.02% sodium azide.
Concentration	1 mg/mL
Storage Conditions	Stk39 antibody can be stored at 4°C for three months and -20°C, stable for up to one year. As with all antibodies care should be taken to avoid repeated freeze thaw cycles. Antibodies should not be exposed to prolonged high temperatures.



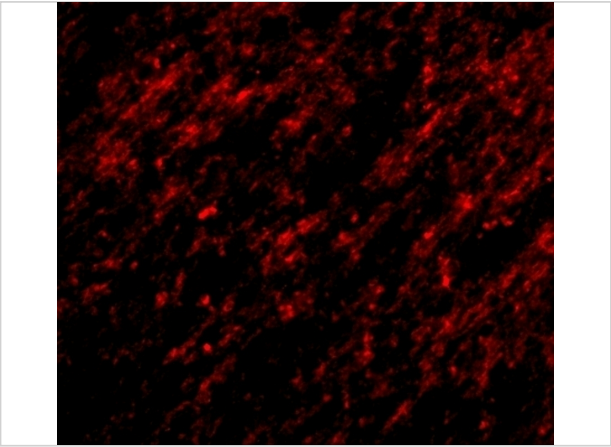
Stk39 Antibody 1

Western blot analysis of Stk39 in SK-N-SH cell lysate with Stk39 antibody at (A) 1 and (B) 2 µg/mL.



Stk39 Antibody 2

Immunohistochemistry of Stk39 in human brain tissue with Stk39 antibody at 2.5 µg/mL.



Stk39 Antibody 3

Immunofluorescence of stk39 in human brain tissue with stk39 antibody at 20 µg/mL.

Disclaimer

Disclaimer	Optimal dilutions/concentrations should be determined by the end user. The information provided is a guideline for product use. This product is for research use only.
------------	--

For research use only. For additional information, visit ProSci's [Terms and Conditions Page](#).