

Integrin alpha 4 Antibody

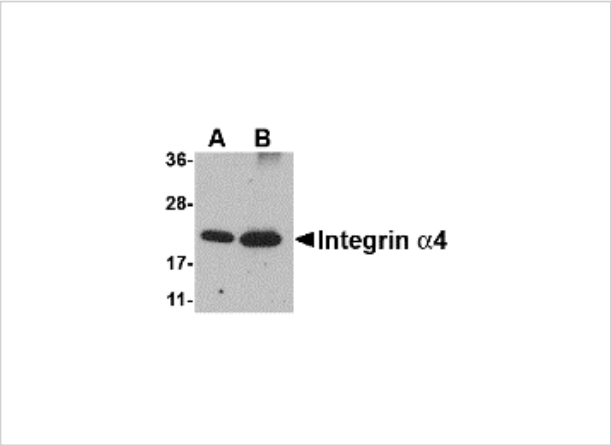
CATALOG NUMBER: 4827

Specifications

Host Species	Rabbit
Species Reactivity	Human, Mouse, Rat
Immunogen	Integrin alpha 4 antibody was raised against a 16 amino acid synthetic peptide from near the center of human Integrin alpha 4. The immunogen is located within amino acids 150 - 200 of Integrin alpha 4.
Conjugate	Unconjugated
Tested Applications	ELISA, IF, WB
User Note	Optimal dilutions for each application to be determined by the researcher.
Specificity	At least two isoforms of integrin alpha 4 are known to exist.
Predicted Molecular Weight	Predicted: 17 kDa (recombinant protein) Observed: 21 kDa

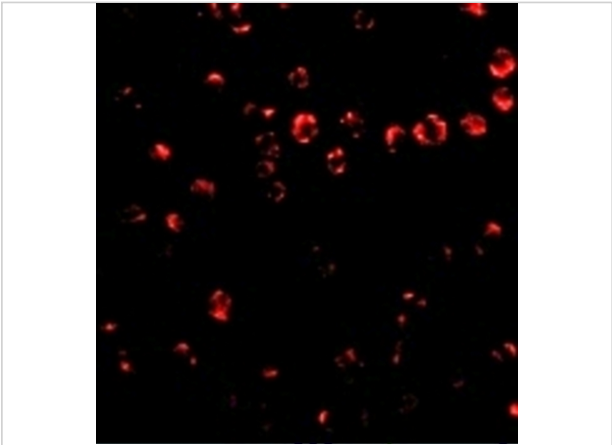
Properties

Purification	Integrin alpha 4 Antibody is affinity chromatography purified via peptide column.
Clonality	Polyclonal
Isotype	IgG
Physical State	Liquid
Buffer	Integrin alpha 4 Antibody is supplied in PBS containing 0.02% sodium azide.
Concentration	1 mg/mL
Storage Conditions	Integrin alpha 4 antibody can be stored at 4°C for three months and -20°C, stable for up to one year. As with all antibodies care should be taken to avoid repeated freeze thaw cycles. Antibodies should not be exposed to prolonged high temperatures.



Integrin alpha 4 Antibody 1

Western blot analysis of Integrin alpha 4 using (A) 25 and (B) 100 ng of recombinant Integrin alpha 4 with Integrin alpha 4 antibody at 1 µg/mL.



Integrin alpha 4 Antibody 2

Immunofluorescence of Integrin alpha 4 in Jurkat cells with Integrin alpha 4 antibody at 2 µg/mL.

Disclaimer

Disclaimer	Optimal dilutions/concentrations should be determined by the end user. The information provided is a guideline for product use. This product is for research use only.
------------	--

For research use only. For additional information, visit ProSci's [Terms and Conditions Page](#).