

## S1P1 Antibody

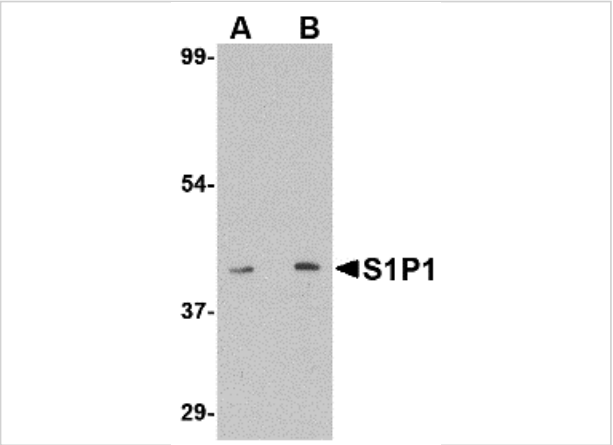
CATALOG NUMBER: 4809

### Specifications

Host Species	Rabbit
Species Reactivity	Human, Mouse, Rat
Homology	Predicted species reactivity based on immunogen sequence: Bovine: (86%)
Immunogen	S1P1 antibody was raised against a 14 amino acid synthetic peptide near the carboxy terminus of the human S1P1. The immunogen is located within the last 50 amino acids of S1P1.
Conjugate	Unconjugated
Tested Applications	ELISA, IF, IHC-P, WB
User Note	Optimal dilutions for each application to be determined by the researcher.
Specificity	At least two isoforms of S1P1 are known to exist; this S1P1 antibody will only recognize the shorter isoform.
Predicted Molecular Weight	Predicted: 42 kDa Observed: 42 kDa

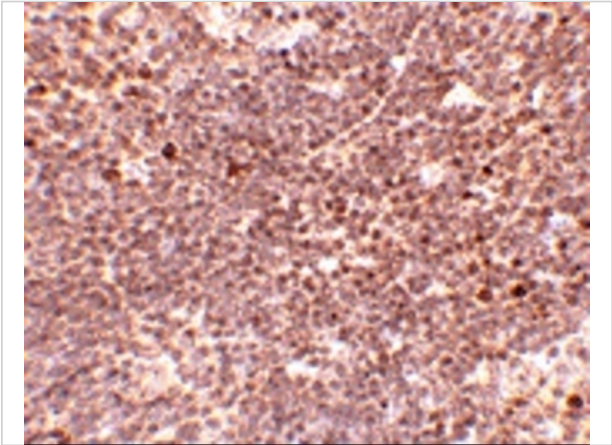
### Properties

Purification	S1P1 Antibody is affinity chromatography purified via peptide column.
Clonality	Polyclonal
Isotype	IgG
Physical State	Liquid
Buffer	S1P1 Antibody is supplied in PBS containing 0.02% sodium azide.
Concentration	1 mg/mL
Storage Conditions	S1P1 antibody can be stored at 4°C for three months and -20°C, stable for up to one year. As with all antibodies care should be taken to avoid repeated freeze thaw cycles. Antibodies should not be exposed to prolonged high temperatures.



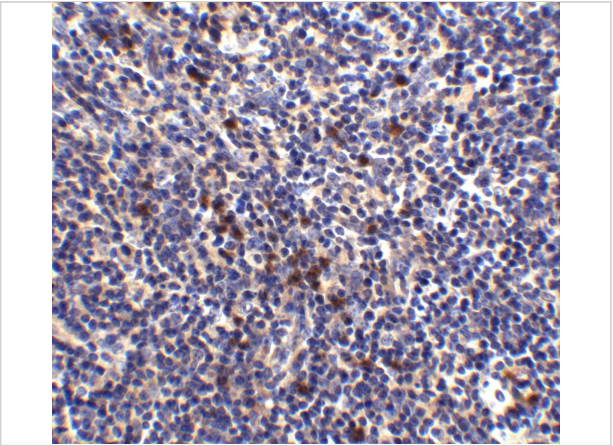
S1P1 Antibody 1

Western blot analysis of S1P1 in mouse thymus lysate with S1P1 antibody at (A) 1 and (B) 2 µg/mL.



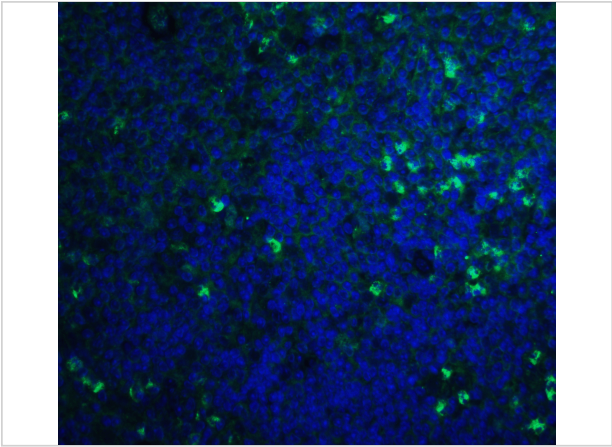
S1P1 Antibody 2

Immunohistochemistry of S1P1 in mouse thymus tissue with S1P1 antibody at 5 µg/mL.



S1P1 Antibody 3

Immunohistochemistry of S1P1 in mouse thymus tissue with S1P1 antibody at 2.5 µg/mL.



S1P1 Antibody 4

Immunofluorescence of S1P1 in mouse thymus tissue with S1P1 antibody at 20 µg/mL.

Green: S1P1 Antibody (4809)  
Blue: DAPI staining

Disclaimer

Disclaimer	Optimal dilutions/concentrations should be determined by the end user. The information provided is a guideline for product use. This product is for research use only.
------------	--

For research use only. For additional information, visit ProSci's [Terms and Conditions Page](#).