

## OVGP1 Antibody

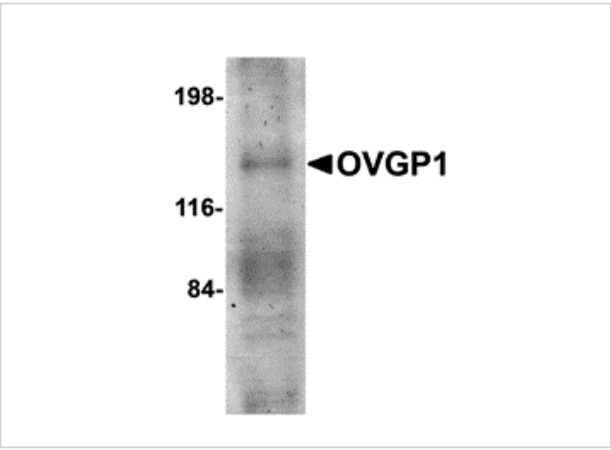
CATALOG NUMBER: 4763

### Specifications

Host Species	Rabbit
Species Reactivity	Human, Mouse, Rat
Homology	Predicted species reactivity based on immunogen sequence: Sheep: (94%), Bovine: (94%), Pig: (79%)
Immunogen	OVGP1 antibody was raised against an 18 amino acid synthetic peptide from near the amino terminus of human OVGP1. The immunogen is located within amino acids 60 - 110 of OVGP1.
Conjugate	Unconjugated
Tested Applications	ELISA, ICC, IF, WB
User Note	Optimal dilutions for each application to be determined by the researcher.
Predicted Molecular Weight	Predicted: 75 kDa Observed: Due to extensive post-translational modification, OVGP1 migrates at ~140 kDa in SDS-PAGE.

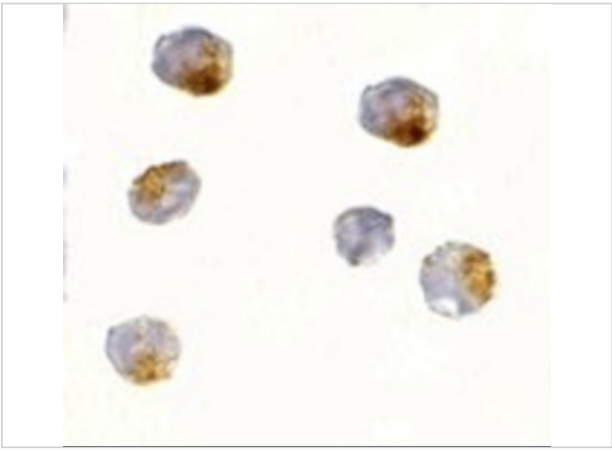
### Properties

Purification	OVGP1 Antibody is affinity chromatography purified via peptide column.
Clonality	Polyclonal
Isotype	IgG
Physical State	Liquid
Buffer	OVGP1 Antibody is supplied in PBS containing 0.02% sodium azide.
Concentration	1 mg/mL
Storage Conditions	OVGP1 antibody can be stored at 4°C for three months and -20°C, stable for up to one year. As with all antibodies care should be taken to avoid repeated freeze thaw cycles. Antibodies should not be exposed to prolonged high temperatures.



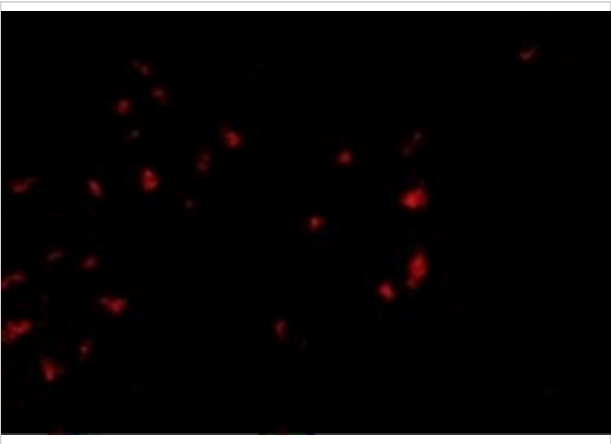
OVGP1 Antibody 1

Western blot analysis of OVGP1 in human placenta tissue lysate with OVGP1 antibody at 1 µg/mL.



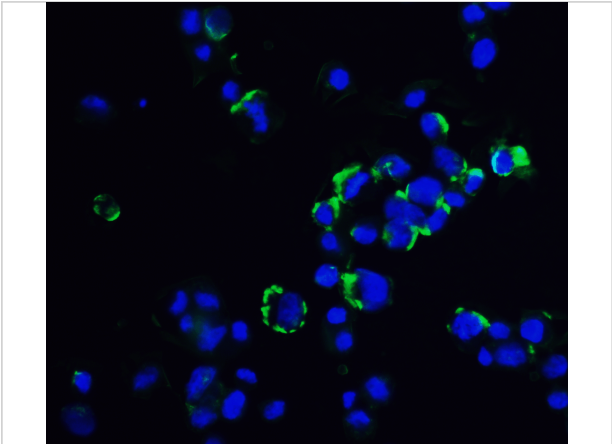
OVGP1 Antibody 2

Immunocytochemistry of OVGP1 in 293 cells with OVGP1L antibody at 2.5 µg/mL.



OVGP1 Antibody 3

Immunofluorescence of OVGP1 in 293 cells with OVGP1 antibody at 2.5 µg/mL.



OVGP1 Antibody 4

Immunofluorescence of OVGP1 in Hek293 cells with OVGP1 antibody at 20 µg/mL.

Green: OVGP1 Antibody (4763)  
Blue: DAPI staining

Disclaimer

Disclaimer	Optimal dilutions/concentrations should be determined by the end user. The information provided is a guideline for product use. This product is for research use only.
------------	--

For research use only. For additional information, visit ProSci's [Terms and Conditions Page](#).