

POLR3F Antibody

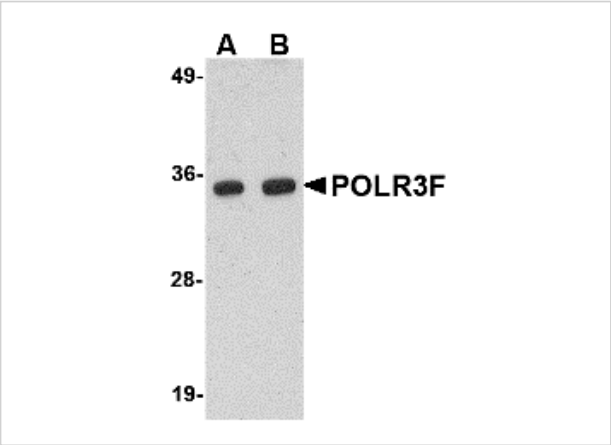
CATALOG NUMBER: 4727

Specifications

| | |
|---------------------|---|
| Host Species | Rabbit |
| Species Reactivity | Human, Mouse, Rat |
| Homology | Predicted species reactivity based on immunogen sequence: Bovine: (100%) |
| Immunogen | POLR3F antibody was raised against a 21 amino acid synthetic peptide from near the amino terminus of human POLR3F. The immunogen is located within the first 50 amino acids of POLR3F. |
| Conjugate | Unconjugated |
| Tested Applications | ELISA, IF, IHC-P, WB |
| User Note | Optimal dilutions for each application to be determined by the researcher. |

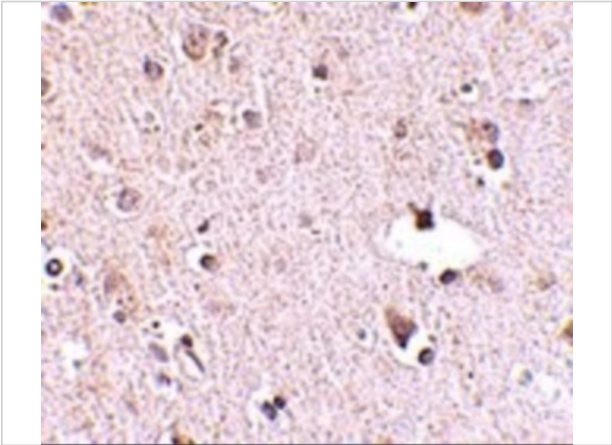
Properties

| | |
|--------------------|--|
| Purification | POLR3F Antibody is affinity chromatography purified via peptide column. |
| Clonality | Polyclonal |
| Isotype | IgG |
| Physical State | Liquid |
| Buffer | POLR3F Antibody is supplied in PBS containing 0.02% sodium azide. |
| Concentration | 1 mg/mL |
| Storage Conditions | POLR3F antibody can be stored at 4°C for three months and -20°C, stable for up to one year. As with all antibodies care should be taken to avoid repeated freeze thaw cycles. Antibodies should not be exposed to prolonged high temperatures. |



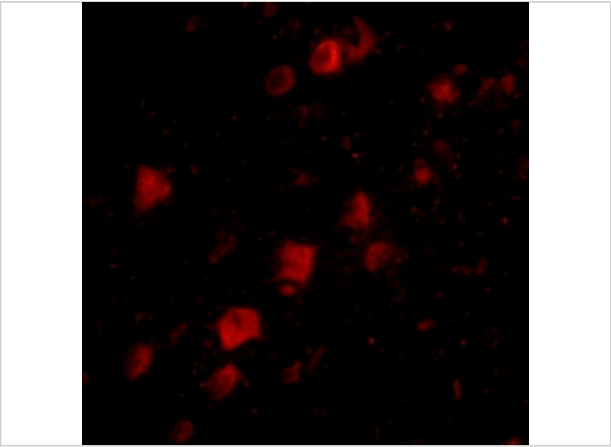
POLR3F Antibody 1

Western blot analysis of POLR3F in human brain tissue lysate with POLR3F antibody at (A) 0.5 and (B) 1 $\mu\text{g/mL}$.



POLR3F Antibody 2

Immunohistochemistry of POLR3F in human brain tissue with POLR3F antibody at 2.5 $\mu\text{g/mL}$.



POLR3F Antibody 3

Immunofluorescence of POLR3F in human brain tissue with POLR3F antibody at 20 $\mu\text{g/mL}$.

Disclaimer

| | |
|-------------------|--|
| Disclaimer | Optimal dilutions/concentrations should be determined by the end user. The information provided is a guideline for product use. This product is for research use only. |
|-------------------|--|

For research use only. For additional information, visit ProSci's [Terms and Conditions Page](#).