

Hax1b Antibody

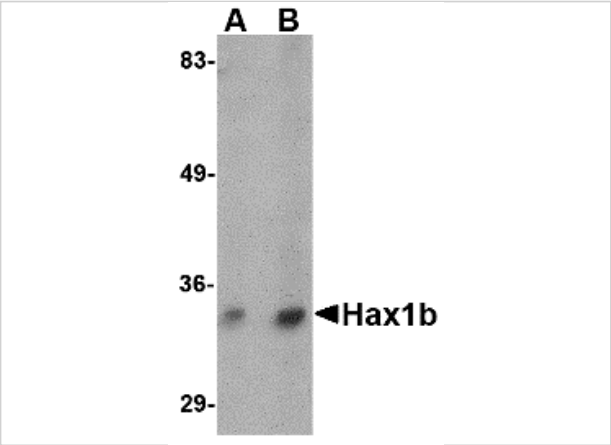
CATALOG NUMBER: 4715

Specifications

| | |
|---------------------|---|
| Host Species | Rabbit |
| Species Reactivity | Human, Mouse, Rat |
| Immunogen | Hax1b antibody was raised against a 10 amino acid synthetic peptide near the amino terminus of human Hax1b. The immunogen is located within the first 50 amino acids of Hax1b. |
| Conjugate | Unconjugated |
| Tested Applications | ELISA, WB |
| User Note | Optimal dilutions for each application to be determined by the researcher. |
| Specificity | At least four isoforms of Hax1 are known to exist. This antibody is predicted to recognize Hax1b. |

Properties

| | |
|--------------------|---|
| Purification | Hax1b Antibody is affinity chromatography purified via peptide column. |
| Clonality | Polyclonal |
| Isotype | IgG |
| Physical State | Liquid |
| Buffer | Hax1b Antibody is supplied in PBS containing 0.02% sodium azide. |
| Concentration | 1 mg/mL |
| Storage Conditions | Hax1b antibody can be stored at 4°C for three months and -20°C, stable for up to one year. As with all antibodies care should be taken to avoid repeated freeze thaw cycles. Antibodies should not be exposed to prolonged high temperatures. |



Hax1b Antibody 1

Western blot analysis of Hax1b in mouse brain tissue lysate with Hax1b antibody at (A) 1 and (B) 2 $\mu\text{g/mL}$.

Disclaimer

| | |
|------------|--|
| Disclaimer | Optimal dilutions/concentrations should be determined by the end user. The information provided is a guideline for product use. This product is for research use only. |
|------------|--|

For research use only. For additional information, visit ProSci's [Terms and Conditions Page](#).