

Hax1a Antibody

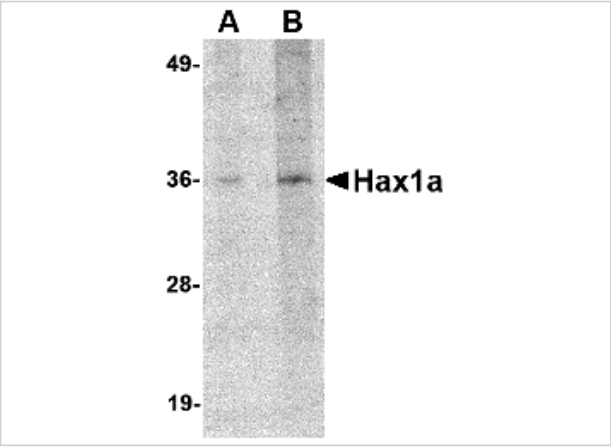
CATALOG NUMBER: 4711

Specifications

Host Species	Rabbit
Species Reactivity	Human, Mouse, Rat
Homology	Predicted species reactivity based on immunogen sequence: Bovine: (94%)
Immunogen	Hax1a antibody was raised against a 15 amino acid synthetic peptide near the amino terminus of human Hax1a. The immunogen is located within the first 50 amino acids of Hax1a.
Conjugate	Unconjugated
Tested Applications	ELISA, WB
User Note	Optimal dilutions for each application to be determined by the researcher.
Specificity	At least four isoforms of Hax1 are known to exist. This antibody is expected to recognize the longest isoform (Hax1a) as well as the shortest.

Properties

Purification	Hax1a Antibody is affinity chromatography purified via peptide column.
Clonality	Polyclonal
Isotype	IgG
Physical State	Liquid
Buffer	Hax1a Antibody is supplied in PBS containing 0.02% sodium azide.
Concentration	1 mg/mL
Storage Conditions	Hax1a antibody can be stored at 4°C for three months and -20°C, stable for up to one year. As with all antibodies care should be taken to avoid repeated freeze thaw cycles. Antibodies should not be exposed to prolonged high temperatures.



Hax1a Antibody 1

Western blot analysis of Hax1a in human brain tissue lysate with Hax1a antibody at (A) 1 and (B) 2 µg/mL.

Disclaimer

Disclaimer	Optimal dilutions/concentrations should be determined by the end user. The information provided is a guideline for product use. This product is for research use only.
-------------------	--

For research use only. For additional information, visit ProSci's [Terms and Conditions Page](#).