



ProSci Incorporated
12170 Flint Place
Poway, CA 92064, USA
prosci-inc.com

P: +1 (888) 513-9525
Local: +1 (858) 513-2638
Fax: +1 (858) 513-2692

customercare@prosci-inc.com
techsupport@prosci-inc.com

NUP107 Antibody

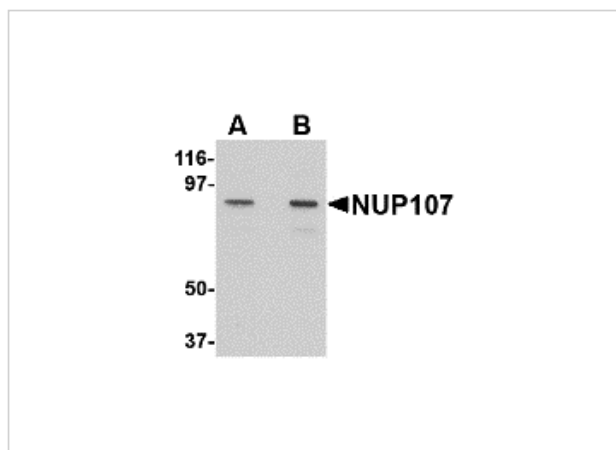
CATALOG NUMBER: 4701

Specifications

Host Species	Rabbit
Species Reactivity	Human, Rat
Homology	Predicted species reactivity based on immunogen sequence: Mouse: (80%)
Immunogen	NUP107 antibody was raised against a 15 amino acid synthetic peptide from near the carboxy terminus of human NUP107. The immunogen is located within amino acids 820 - 870 of NUP107.
Conjugate	Unconjugated
Tested Applications	ELISA, ICC, IF, WB
User Note	Optimal dilutions for each application to be determined by the researcher.

Properties

Purification	NUP107 Antibody is affinity chromatography purified via peptide column.
Clonality	Polyclonal
Isotype	IgG
Physical State	Liquid
Buffer	NUP107 Antibody is supplied in PBS containing 0.02% sodium azide.
Concentration	1 mg/mL
Storage Conditions	NUP107 antibody can be stored at 4°C for three months and -20°C, stable for up to one year. As with all antibodies care should be taken to avoid repeated freeze thaw cycles. Antibodies should not be exposed to prolonged high temperatures.



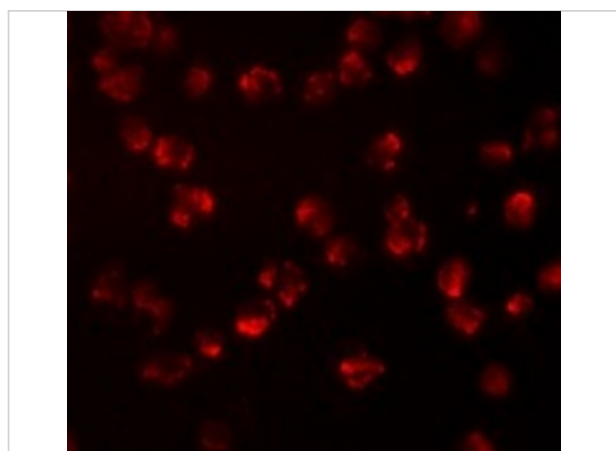
NUP107 Antibody 1

Western blot analysis of NUP107 in A549 cell lysate with NUP107 antibody at (A) 1 and (B) 2 $\mu\text{g/mL}$.



NUP107 Antibody 2

Immunocytochemistry of NUP107 in A549 cells with NUP107 antibody at 2.5 $\mu\text{g/mL}$.



NUP107 Antibody 3

Immunofluorescence of NUP107 in A549 cells with NUP107 antibody at 10 $\mu\text{g/mL}$.

Disclaimer

Disclaimer

Optimal dilutions/concentrations should be determined by the end user. The information provided is a guideline for product use. This product is for research use only.

For research use only. For additional information, visit ProSci's [Terms and Conditions Page](#).