

## BICD1 Antibody

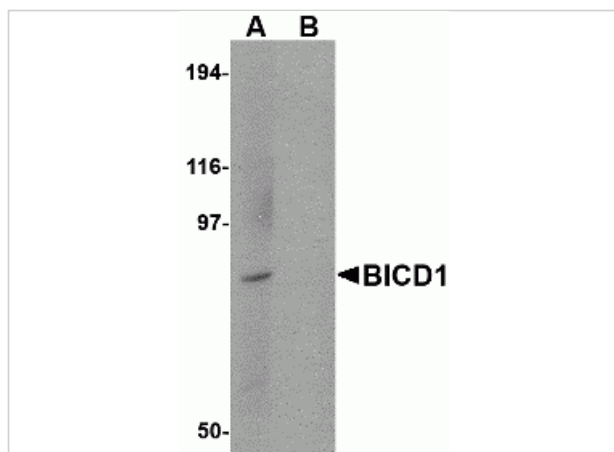
CATALOG NUMBER: 4663

### Specifications

<b>Host Species</b>	Rabbit
<b>Species Reactivity</b>	Human, Mouse, Rat
<b>Immunogen</b>	BICD1 antibody was raised against a 15 amino acid synthetic peptide from near the carboxy terminus of human BICD1. The immunogen is located within the last 50 amino acids of BICD1.
<b>Conjugate</b>	Unconjugated
<b>Tested Applications</b>	ELISA, ICC, IF, WB
<b>User Note</b>	Optimal dilutions for each application to be determined by the researcher.
<b>Specificity</b>	At least two isoforms of BICD1 are known to exist; this antibody will only recognize the larger isoform.

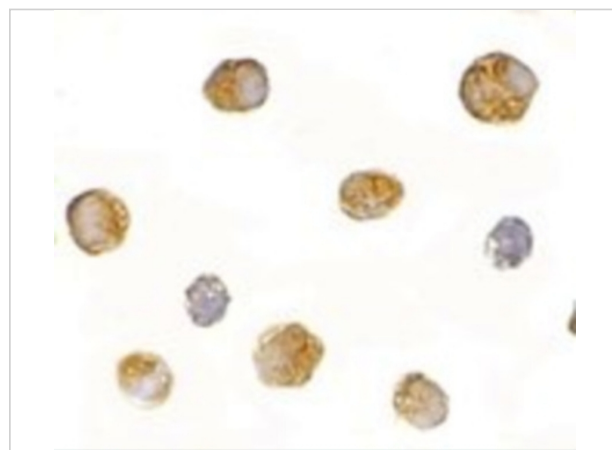
### Properties

<b>Purification</b>	BICD1 Antibody is affinity chromatography purified via peptide column.
<b>Clonality</b>	Polyclonal
<b>Isotype</b>	IgG
<b>Physical State</b>	Liquid
<b>Buffer</b>	BICD1 Antibody is supplied in PBS containing 0.02% sodium azide.
<b>Concentration</b>	1 mg/mL
<b>Storage Conditions</b>	BICD1 antibody can be stored at 4°C for three months and -20°C, stable for up to one year. As with all antibodies care should be taken to avoid repeated freeze thaw cycles. Antibodies should not be exposed to prolonged high temperatures.



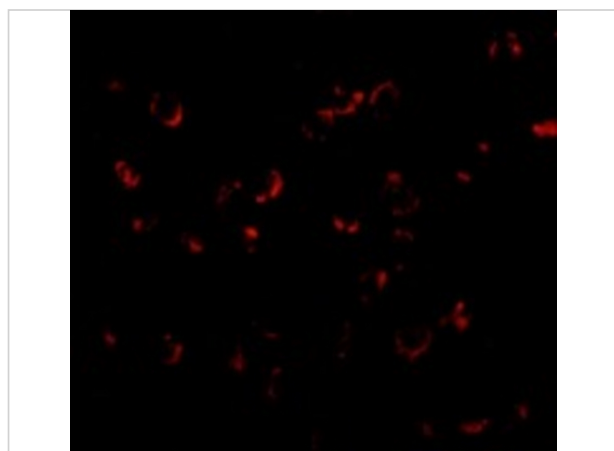
## BICD1 Antibody 1

Western blot analysis of BICD1 in Daudi cell lysate with BICD1 antibody at 1 µg/mL in (A) the absence and (B) the presence of blocking peptide.



## BICD1 Antibody 2

Immunocytochemistry of BICD1 in Daudi cells with BICD1 antibody at 2.5 µg/mL.



## BICD1 Antibody 3

Immunofluorescence of BICD1 in Daudi cells with BICD1 antibody at 20 µg/mL.

## Disclaimer

### Disclaimer

Optimal dilutions/concentrations should be determined by the end user. The information provided is a guideline for product use. This product is for research use only.

For research use only. For additional information, visit ProSci's [Terms and Conditions Page](#).