

CSN8 Antibody

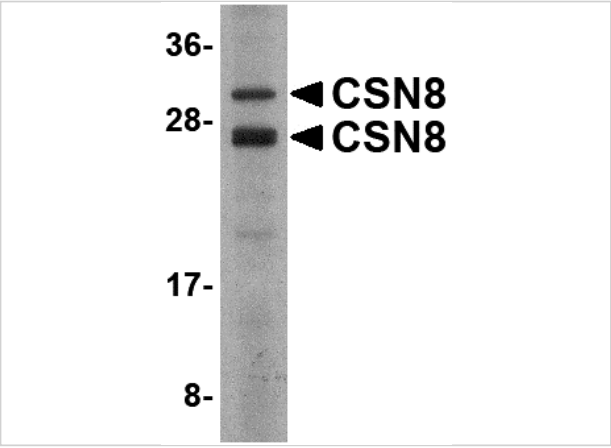
CATALOG NUMBER: 4601

Specifications

Host Species	Rabbit
Species Reactivity	Human, Mouse, Rat
Immunogen	CSN8 antibody was raised against a 15 amino acid synthetic peptide near the carboxy terminus of the human CSN8. The immunogen is located within the last 50 amino acids of CSN8.
Conjugate	Unconjugated
Tested Applications	ELISA, WB
User Note	Optimal dilutions for each application to be determined by the researcher.

Properties

Purification	CSN8 Antibody is affinity chromatography purified via peptide column.
Clonality	Polyclonal
Isotype	IgG
Physical State	Liquid
Buffer	CSN8 Antibody is supplied in PBS containing 0.02% sodium azide.
Concentration	1 mg/mL
Storage Conditions	CSN8 antibody can be stored at 4°C for three months and -20°C, stable for up to one year. As with all antibodies care should be taken to avoid repeated freeze thaw cycles. Antibodies should not be exposed to prolonged high temperatures.



CSN8 Antibody 1

Western blot analysis of CSN8 in Human liver lysate with CSN8 antibody at 2 µg/mL.

Disclaimer

Disclaimer	Optimal dilutions/concentrations should be determined by the end user. The information provided is a guideline for product use. This product is for research use only.
------------	------------------------------------------------------------------------------------------------------------------------------------------------------------------------

For research use only. For additional information, visit ProSci's [Terms and Conditions Page](#).