

## Slitrk3 Antibody

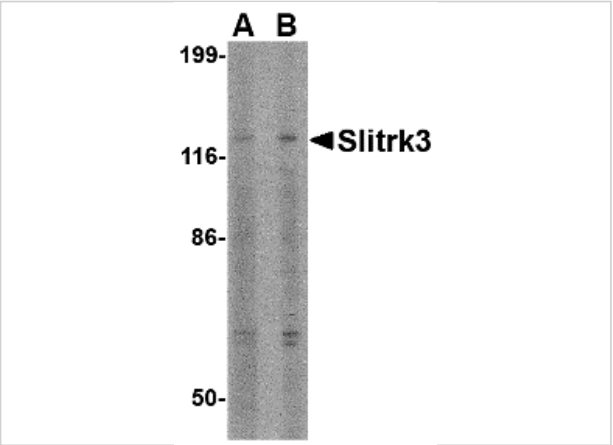
CATALOG NUMBER: 4463

### Specifications

Host Species	Rabbit
Species Reactivity	Human, Mouse
Immunogen	Slitrk3 antibody was raised against a 14 amino acid synthetic peptide from near the carboxy terminus of human Slitrk3. The immunogen is located within amino acids 320 - 370 of Slitrk3.
Conjugate	Unconjugated
Tested Applications	ELISA, IF, IHC-P, WB
User Note	Optimal dilutions for each application to be determined by the researcher.
Specificity	This antibody is predicted to have no cross-reactivity to other Slitrk proteins.

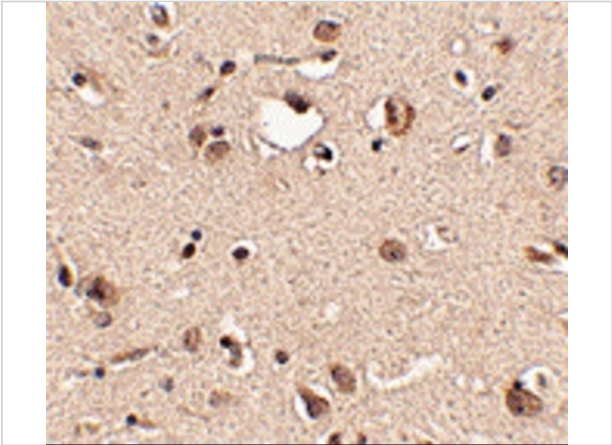
### Properties

Purification	Slitrk3 Antibody is affinity chromatography purified via peptide column.
Clonality	Polyclonal
Isotype	IgG
Physical State	Liquid
Buffer	Slitrk3 Antibody is supplied in PBS containing 0.02% sodium azide.
Concentration	1 mg/mL
Storage Conditions	Slitrk3 antibody can be stored at 4°C for three months and -20°C, stable for up to one year. As with all antibodies care should be taken to avoid repeated freeze thaw cycles. Antibodies should not be exposed to prolonged high temperatures.



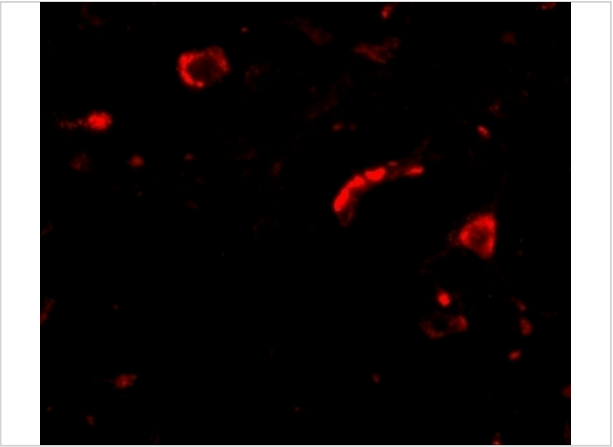
**Slitrk3 Antibody 1**

Western blot analysis of Slitrk3 in SK-N-SH cell lysate with Slitrk3 antibody at (A) 0.5 and (B) 1 µg/mL.



**Slitrk3 Antibody 2**

Immunohistochemistry of Slitrk3 in human brain tissue with Slitrk3 antibody at 2.5 µg/mL.



**Slitrk3 Antibody 3**

Immunofluorescence of slitrk3 in human brain tissue with slitrk3 antibody at 20 µg/mL.

**Disclaimer**

<b>Disclaimer</b>	Optimal dilutions/concentrations should be determined by the end user. The information provided is a guideline for product use. This product is for research use only.
-------------------	--

For research use only. For additional information, visit ProSci's [Terms and Conditions Page](#).