

## Slitrk1 Antibody

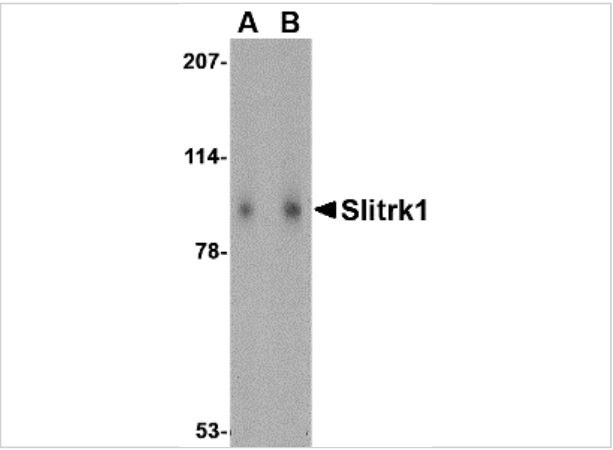
CATALOG NUMBER: 4455

### Specifications

Host Species	Rabbit
Species Reactivity	Human, Mouse, Rat
Immunogen	Slitrk1 antibody was raised against a 18 amino acid synthetic peptide from near the center of human Slitrk1. The immunogen is located within amino acids 270 - 320 of Slitrk1.
Conjugate	Unconjugated
Tested Applications	ELISA, IF, IHC-P, WB
User Note	Optimal dilutions for each application to be determined by the researcher.
Specificity	This antibody is predicted to have no cross-reactivity to other Slitrk proteins.

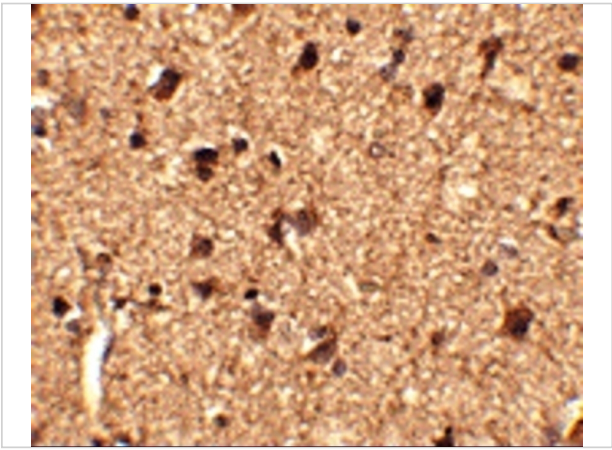
### Properties

Purification	Slitrk1 Antibody is affinity chromatography purified via peptide column.
Clonality	Polyclonal
Isotype	IgG
Physical State	Liquid
Buffer	Slitrk1 Antibody is supplied in PBS containing 0.02% sodium azide.
Concentration	1 mg/mL
Storage Conditions	Slitrk1 antibody can be stored at 4°C for three months and -20°C, stable for up to one year. As with all antibodies care should be taken to avoid repeated freeze thaw cycles. Antibodies should not be exposed to prolonged high temperatures.



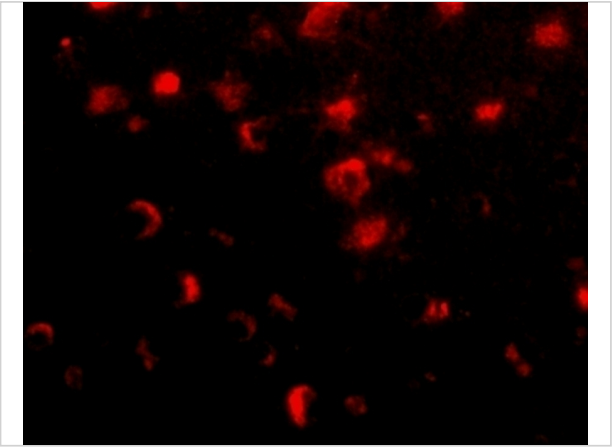
Slitrk1 Antibody 1

Western blot analysis of Slitrk1 in human brain tissue lysate with Slitrk1 antibody at (A) 1 and (B) 2 µg/mL.



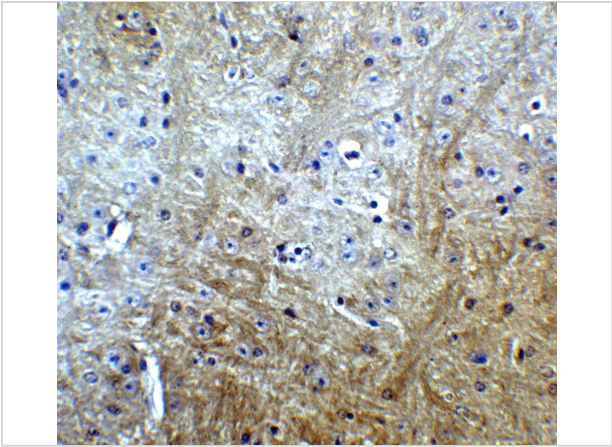
Slitrk1 Antibody 2

Immunohistochemistry of Slitrk1 in human brain tissue with Slitrk1 antibody at 2.5 µg/mL.



Slitrk1 Antibody 3

Immunofluorescence of slitrk1 in human brain tissue with slitrk1 antibody at 20 µg/mL.



Slitrk1 Antibody 4

Immunohistochemistry of Slitrk1 in mouse brain tissue with Slitrk1 Antibody at 5 µg/mL.

Disclaimer

Disclaimer	Optimal dilutions/concentrations should be determined by the end user. The information provided is a guideline for product use. This product is for research use only.
------------	------------------------------------------------------------------------------------------------------------------------------------------------------------------------

For research use only. For additional information, visit ProSci's [Terms and Conditions Page](#).