

CXCR4-Lo Antibody

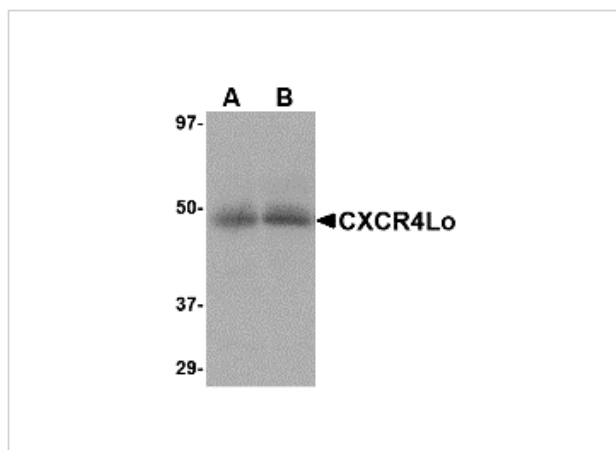
CATALOG NUMBER: 4443

Specifications

Host Species	Rabbit
Species Reactivity	Human
Immunogen	CXCR4-Lo antibody was raised against a peptide corresponding to nine amino acids near the amino terminus of human CXCR4 isoform a. The immunogen is located within the first 50 amino acids of CXCR4-Lo.
Conjugate	Unconjugated
Tested Applications	ELISA, ICC, IF, WB
User Note	Optimal dilutions for each application to be determined by the researcher.
Specificity	This antibody is specific for the longer isoform of CXCR4.

Properties

Purification	CXCR4-Lo Antibody is purified IgG.
Clonality	Polyclonal
Isotype	IgG
Physical State	Liquid
Buffer	CXCR4-Lo Antibody is supplied in PBS containing 0.02% sodium azide.
Concentration	1 mg/mL
Storage Conditions	CXCR4-Lo antibody can be stored at 4°C for three months and -20°C, stable for up to one year. As with all antibodies care should be taken to avoid repeated freeze thaw cycles. Antibodies should not be exposed to prolonged high temperatures.



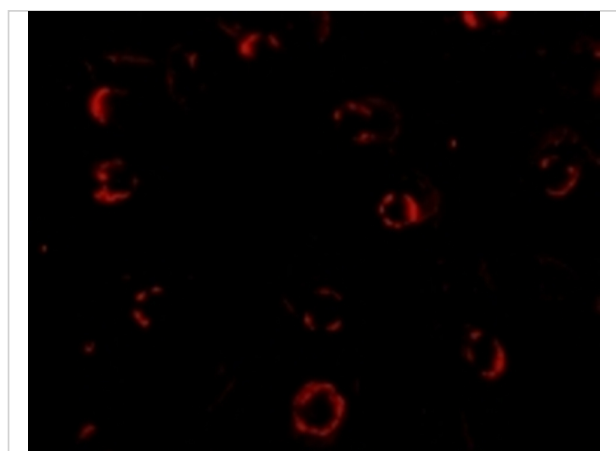
CXCR4-Lo Antibody 1

Western blot analysis of CXCR4 in (A) human spleen and (B) human thymus tissue lysate with CXCR4-Lo antibody at 10 µg/mL.



CXCR4-Lo Antibody 2

Immunohistochemistry of CXCR4Lo in HeLa cells with CXCR4Lo antibody at 2 µg/mL.



CXCR4-Lo Antibody 3

Immunofluorescence of CXCR4-Lo in HeLa cells with CXCR4-Lo antibody at 4 µg/mL.

Disclaimer

Disclaimer

Optimal dilutions/concentrations should be determined by the end user. The information provided is a guideline for product use. This product is for research use only.

For research use only. For additional information, visit ProSci's [Terms and Conditions Page](#).