

ATG12 Antibody

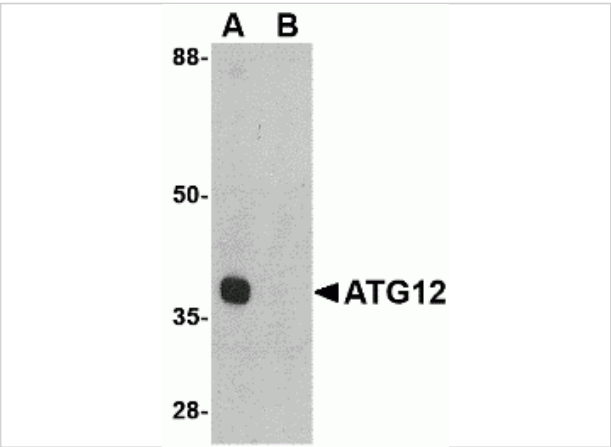
CATALOG NUMBER: 4423

Specifications

Host Species	Rabbit
Species Reactivity	Human, Mouse, Rat
Homology	Predicted species reactivity based on immunogen sequence: Bovine: (86%)
Immunogen	ATG12 antibody was raised against a 15 amino acid synthetic peptide from near the center of human ATG12. The immunogen is located within the first 50 amino acids of ATG12.
Conjugate	Unconjugated
Tested Applications	ELISA, IF, IHC-P, WB
User Note	Optimal dilutions for each application to be determined by the researcher.

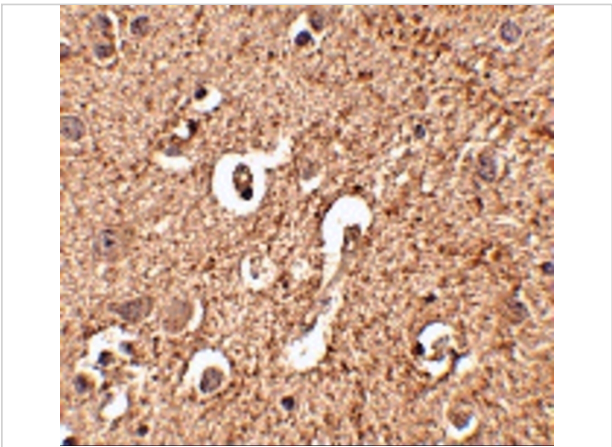
Properties

Purification	ATG12 Antibody is affinity chromatography purified via peptide column.
Clonality	Polyclonal
Isotype	IgG
Physical State	Liquid
Buffer	ATG12 Antibody is supplied in PBS containing 0.02% sodium azide.
Concentration	1 mg/mL
Storage Conditions	ATG12 antibody can be stored at 4°C for three months and -20°C, stable for up to one year. As with all antibodies care should be taken to avoid repeated freeze thaw cycles. Antibodies should not be exposed to prolonged high temperatures.



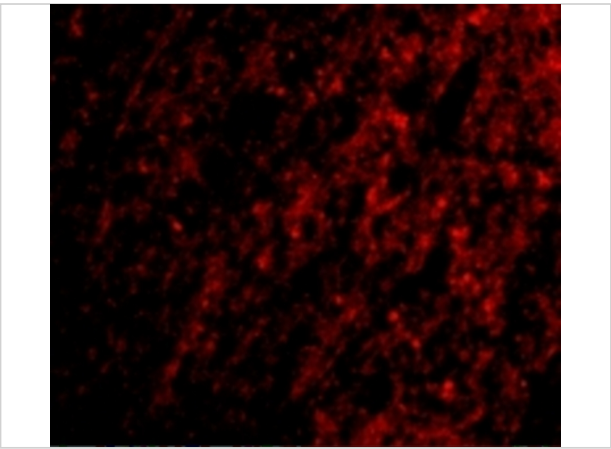
ATG12 Antibody 1

Western blot analysis of ATG12 in mouse heart tissue lysate with ATG12 antibody at 1 µg/mL in (A) the absence and (B) the presence of blocking peptide.



ATG12 Antibody 2

Immunohistochemistry of ATG12 in human brain tissue with ATG12 antibody at 2.5 µg/mL.



ATG12 Antibody 3

Immunofluorescence of ATG12 in Human Brain cells with ATG12 antibody at 20 µg/mL.

Disclaimer

Disclaimer	Optimal dilutions/concentrations should be determined by the end user. The information provided is a guideline for product use. This product is for research use only.
------------	--

For research use only. For additional information, visit ProSci's [Terms and Conditions Page](#).