

StreptII-tag Antibody

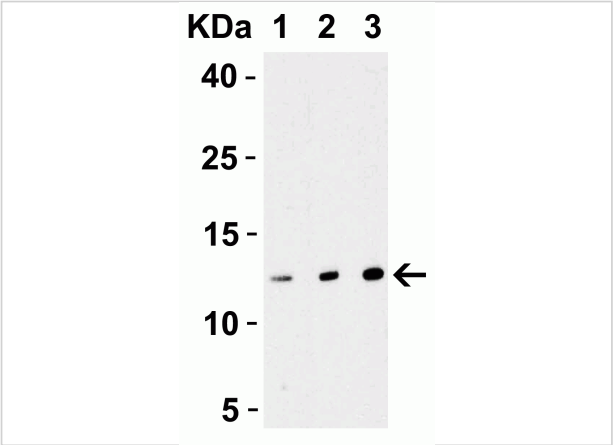
CATALOG NUMBER: 4335

Specifications

Host Species	Rabbit
Species Reactivity	Tag
Immunogen	Anti-StreptII-tag antibody (4335) StreptII-tag antibody was raised against the amino acid sequence "srWSHPQFEKsh".
Conjugate	Unconjugated
Tested Applications	ELISA, WB
User Note	Optimal dilutions for each application to be determined by the researcher.

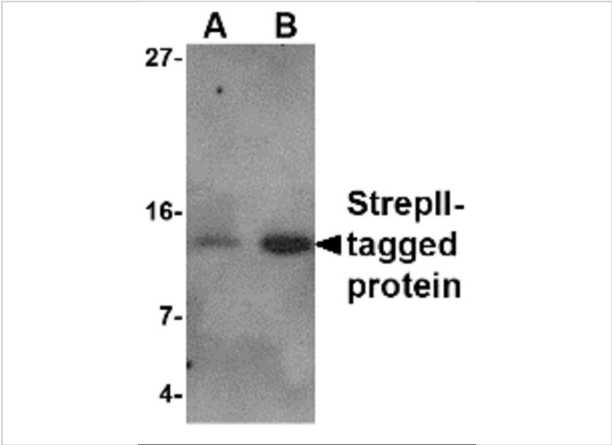
Properties

Purification	StreptII-tag Antibody is affinity chromatography purified via peptide column.
Clonality	Polyclonal
Isotype	IgG
Physical State	Liquid
Buffer	StreptII-tag Antibody is supplied in PBS containing 0.02% sodium azide.
Concentration	1 mg/mL
Storage Conditions	StreptII-tag antibody can be stored at 4°C for three months and -20°C, stable for up to one year. As with all antibodies care should be taken to avoid repeated freeze thaw cycles. Antibodies should not be exposed to prolonged high temperatures.



StreptII-tag Antibody 1

Figure 1 Western Blot Validation with StreptII-tagged Recombinant Protein
Loading: 30 ng of StreptII-tagged recombinant protein per lane. Antibodies: StreptII-tag 4335, 1h incubatio...



StreptII-tag Antibody 2

Figure 2 Western Blot Validation with StreptII-tagged Recombinant Protein
Loading: A 5 ng and B 25 ng of StreptII-tagged recombinant protein. Antibodies: StreptII-tag 4335 (1 µg/mL)...

Disclaimer

Disclaimer	Optimal dilutions/concentrations should be determined by the end user. The information provided is a guideline for product use. This product is for research use only.
------------	--

For research use only. For additional information, visit ProSci's [Terms and Conditions Page](#).