

PDL1 ELISA Matched Antibody Pair (Risk Free)

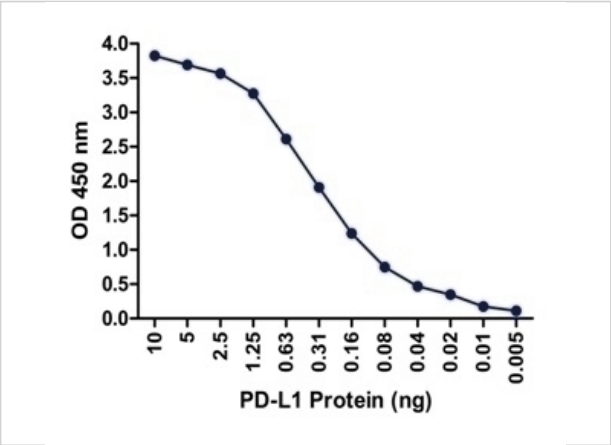
CATALOG NUMBER: RFP-0307

Specifications

Host Species	Mouse
Species Reactivity	Human
Immunogen	PD-L1 antibodies were raised against the extracellular domain of human PD-L1.
Tested Applications	ELISA
User Note	Optimal dilutions for each application to be determined by the researcher.

Properties

Purification	Antibodies are supplied as protein A purified IgG1.
Clonality	Monoclonal
Isotype	IgG1
Physical State	Liquid
Buffer	PBS containing 0.02% sodium azide.
Concentration	Antibody 1 mg/mL
Storage Conditions	Antibodies can be stored at 4°C for three months and -20°C, stable for up to one year. As with all antibodies care should be taken to avoid repeated freeze thaw cycles. Antibodies should not be exposed to prolonged high temperatures.



PDL1 ELISA Matched Antibody Pair (Risk Free) 1

A sandwich ELISA was performed using the anti-PD-L1 mAb RF16038 (5 µg/ml) as the capture antibody. Biotin-labeled anti-PD-L1 mAb RF16032-biotin (1 µg/ml) and streptavidin-HRP (0.1 µg/ml) were used...

Disclaimer

Disclaimer	This product is for research use only.
------------	--

For research use only. For additional information, visit ProSci's [Terms and Conditions Page](#).