



ProSci Incorporated
12170 Flint Place
Poway, CA 92064, USA
prosci-inc.com

P: +1 (888) 513-9525
Local: +1 (858) 513-2638
Fax: +1 (858) 513-2692

customercare@prosci-inc.com
techsupport@prosci-inc.com

TMIGD2 Antibody [7A10]

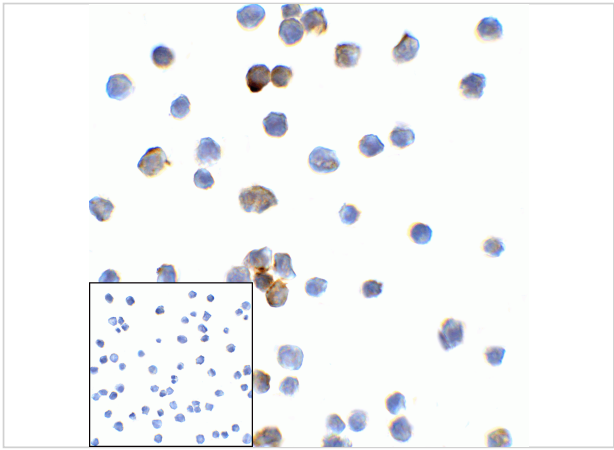
CATALOG NUMBER: RF16123

Specifications

Host Species	Mouse
Species Reactivity	Human
Immunogen	TMIGD2 antibody was raised against the extracellular domain of human TMIGD2
Conjugate	Unconjugated
Tested Applications	ICC, IF, IHC-P
User Note	Optimal dilutions for each application to be determined by the researcher.

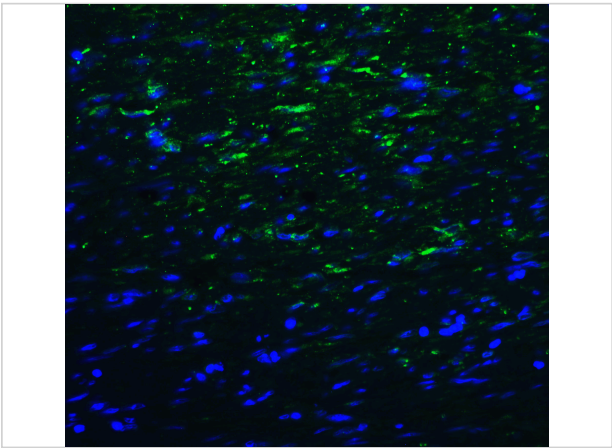
Properties

Purification	TMIGD2 Antibody is supplied as protein A purified IgG1.
Clonality	Monoclonal
Isotype	IgG1,k
Physical State	Liquid
Buffer	TMIGD2 Antibody is supplied in PBS containing 0.02% sodium azide and 50% glycerol.
Concentration	1 mg/mL
Storage Conditions	TMIGD2 antibody can be stored at 4°C for three months and -20°C, stable for up to one year. As with all antibodies care should be taken to avoid repeated freeze thaw cycles. Antibodies should not be exposed to prolonged high temperatures.



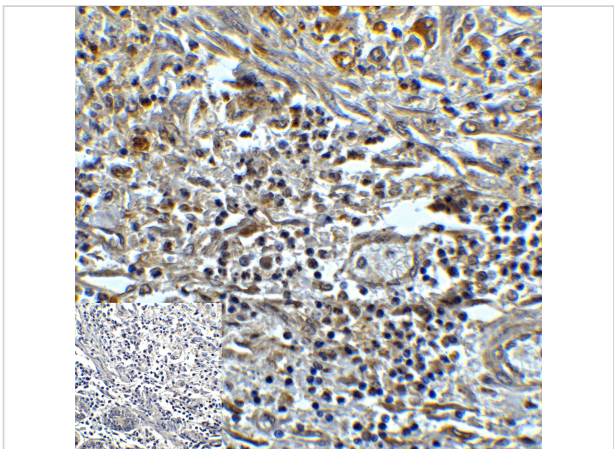
TMIGD2 Antibody [7A10] 1

Immunocytochemistry of TMIGD2 in transfected HEK293 cells with TMIGD2 antibody at 2 µg/mL. Lower left: Immunocytochemistry in transfected HEK293 cells with control mouse IgG antibody at 2 µg/mL.



TMIGD2 Antibody [7A10] 2

Immunofluorescence of TMIGD2 in human colon carcinoma tissue with TMIGD2 antibody at 20 µg/mL.



TMIGD2 Antibody [7A10] 3

Immunohistochemistry of TMIGD2 in human colon carcinoma tissue with TMIGD2 antibody at 5 µg/mL.

Disclaimer

Disclaimer	Optimal dilutions/concentrations should be determined by the end user. The information provided is a guideline for product use. This product is for research use only.
------------	------------------------------------------------------------------------------------------------------------------------------------------------------------------------

For research use only. For additional information, visit ProSci's [Terms and Conditions Page](#).