

CDKN2A Antibody

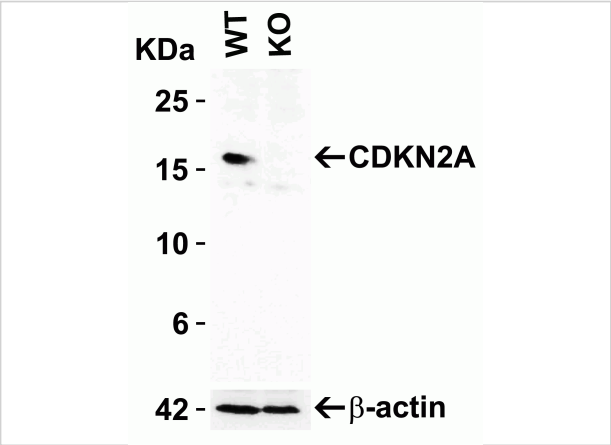
CATALOG NUMBER: 4211

Specifications

Host Species	Rabbit
Species Reactivity	Human, Mouse, Rat
Immunogen	Anti-CDKN2A antibody (4211) was raised against a peptide corresponding to 18 amino acids near the amino terminus of human CDKN2A. The immunogen is located within the first 50 amino acids of CDKN2A.
Conjugate	Unconjugated
Tested Applications	ELISA, IF, IHC-P, WB
User Note	Optimal dilutions for each application to be determined by the researcher.
Predicted Molecular Weight	Predicted: 17 kDa Observed: 17 kDa

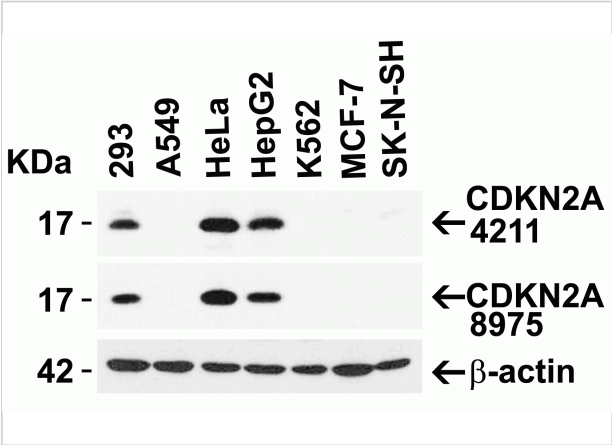
Properties

Purification	CDKN2A Antibody is affinity chromatography purified via peptide column.
Clonality	Polyclonal
Isotype	IgG
Physical State	Liquid
Buffer	CDKN2A Antibody is supplied in PBS containing 0.02% sodium azide.
Concentration	1 mg/mL
Storage Conditions	CDKN2A antibody can be stored at 4°C for three months and -20°C, stable for up to one year. As with all antibodies care should be taken to avoid repeated freeze thaw cycles. Antibodies should not be exposed to prolonged high temperatures.



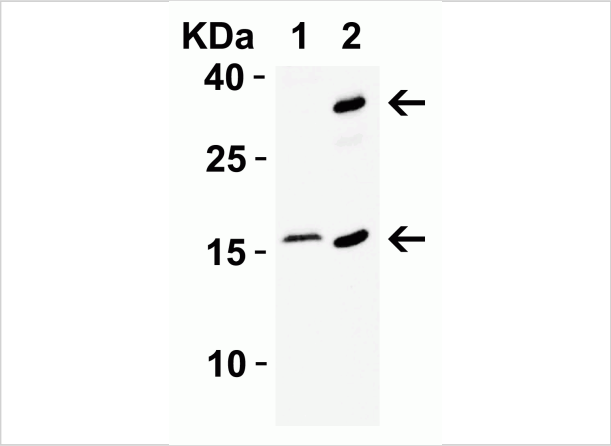
CDKN2A Antibody 1

Figure 1 KO Validation of CDKN2A in 293 Cells
Loading: 10 μ g of 293 WT cell lysates or CDKN2A KO cell lysates. Antibodies: CDKN2A, 4211 (2 μ g/mL) and beta-actin, 3779 (1 μ g/mL)...



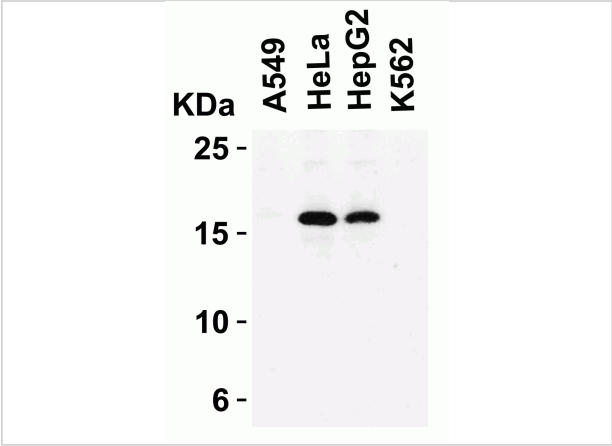
CDKN2A Antibody 2

Figure 2 Independent Antibody Validation (IAV) via Protein Expression Profile in Cell Lines
Loading: 15 μ g of lysates per lane. Antibodies: CDKN2A 4211 (4 μ g/mL), CDKN2A 24-023 (...)



CDKN2A Antibody 3

Figure 3 Recombinant Protein Test
Loading: 15 μ g of lysates per lane. Antibodies: CDKN2A 4211 (2 μ g/mL), overnight incubation at 4°C in 5% NFDm/TBST. Secondary: Goat anti-rabbit I...



CDKN2A Antibody 4

Figure 4 Western Blot Validation in Human Cell Lines
Loading: 15 μ g of lysates per lane. Antibodies: CDKN2A, 4211 (2 μ g/mL), 1h incubation at RT in 5% NFDm/TBST. Secondary: Goat...

Disclaimer

Disclaimer	Optimal dilutions/concentrations should be determined by the end user. The information provided is a guideline for product use. This product is for research use only.
------------	------------------------------------------------------------------------------------------------------------------------------------------------------------------------

For research use only. For additional information, visit ProSci's [Terms and Conditions Page](#).