

HAP1 Antibody

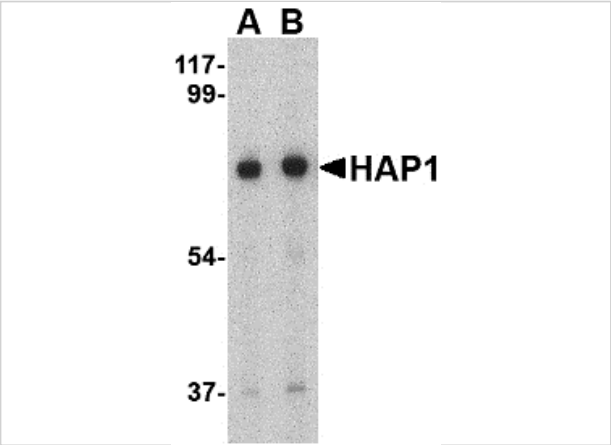
CATALOG NUMBER: 4205

Specifications

Host Species	Rabbit
Species Reactivity	Human, Mouse, Rat
Immunogen	HAP1 antibody was raised against a 19 amino acid synthetic peptide from near the center of human HAP1. The immunogen is located within amino acids 310 - 360 of HAP1.
Conjugate	Unconjugated
Tested Applications	ELISA, IF, IHC-P, WB
User Note	Optimal dilutions for each application to be determined by the researcher.

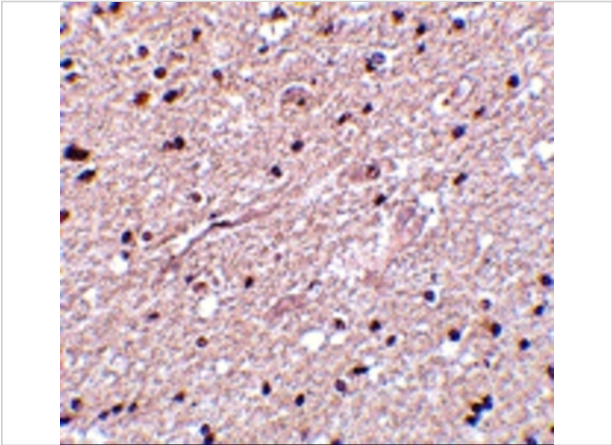
Properties

Purification	HAP1 Antibody is affinity chromatography purified via peptide column.
Clonality	Polyclonal
Isotype	IgG
Physical State	Liquid
Buffer	HAP1 Antibody is supplied in PBS containing 0.02% sodium azide.
Concentration	1 mg/mL
Storage Conditions	HAP1 antibody can be stored at 4°C for three months and -20°C, stable for up to one year. As with all antibodies care should be taken to avoid repeated freeze thaw cycles. Antibodies should not be exposed to prolonged high temperatures.



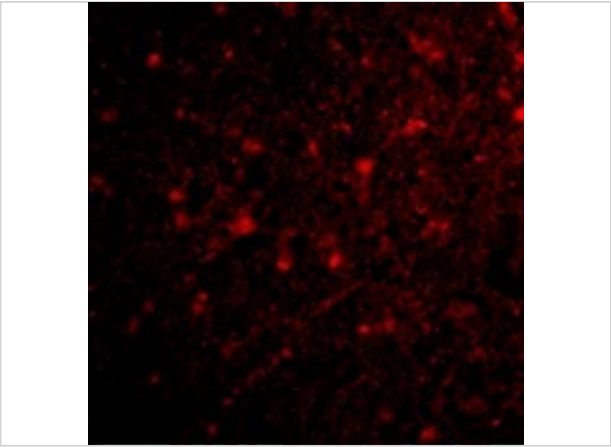
HAP1 Antibody 1

Western blot analysis of HAP1 in mouse brain tissue lysate with HAP1 antibody at (A) 0.5 and (B) 1 µg/mL.



HAP1 Antibody 2

Immunohistochemistry of HAP1 in human brain tissue with HAP1 antibody at 2.5 µg/mL.



HAP1 Antibody 3

Immunofluorescence of HAP1 in Human Brain cells with HAP1 antibody at 20 µg/mL.

Disclaimer

Disclaimer	Optimal dilutions/concentrations should be determined by the end user. The information provided is a guideline for product use. This product is for research use only.
------------	--

For research use only. For additional information, visit ProSci's [Terms and Conditions Page](#).