

## PDL2 Antibody [7C7]

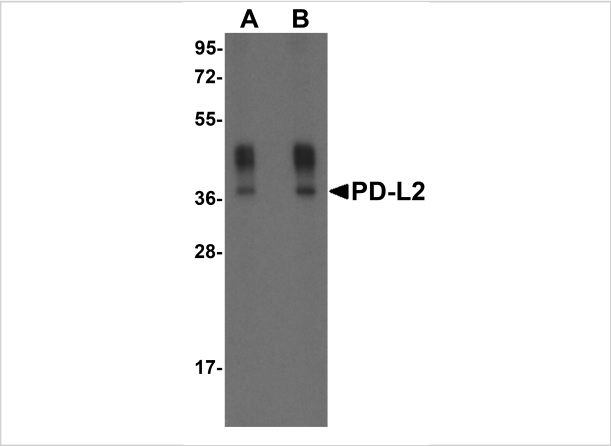
CATALOG NUMBER: RF16023

### Specifications

Host Species	Mouse
Species Reactivity	Human
Immunogen	PD-L2 antibody was raised against the extracellular domain of human PD-L2.
Conjugate	Unconjugated
Tested Applications	ELISA, Flow, ICC, IF, IHC-P, WB
User Note	Optimal dilutions for each application to be determined by the researcher.
Predicted Molecular Weight	Predicted: 30 kDa Observed: 38 kDa

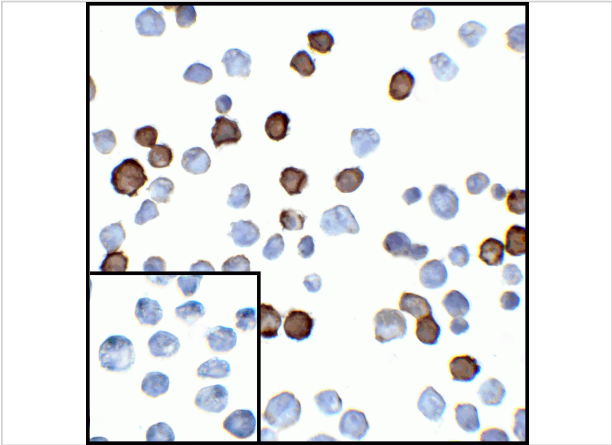
### Properties

Purification	PD-L2 Antibody is supplied as protein A purified IgG1.
Clonality	Monoclonal
Isotype	IgG1
Physical State	Liquid
Buffer	PD-L2 Antibody is supplied in PBS containing 0.02% sodium azide and 50% glycerol.
Concentration	1 mg/mL
Storage Conditions	PD-L2 antibody can be stored at 4°C for three months and -20°C, stable for up to one year. As with all antibodies care should be taken to avoid repeated freeze thaw cycles. Antibodies should not be exposed to prolonged high temperatures.



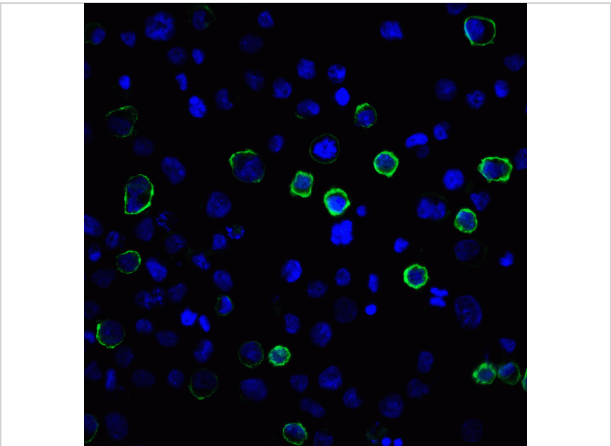
PDL2 Antibody [7C7] 1

Western blot analysis of PD-L2 in overexpressing HEK293 cells PD-L2 antibody at 0.5 and 1 µg/ml



PDL2 Antibody [7C7] 2

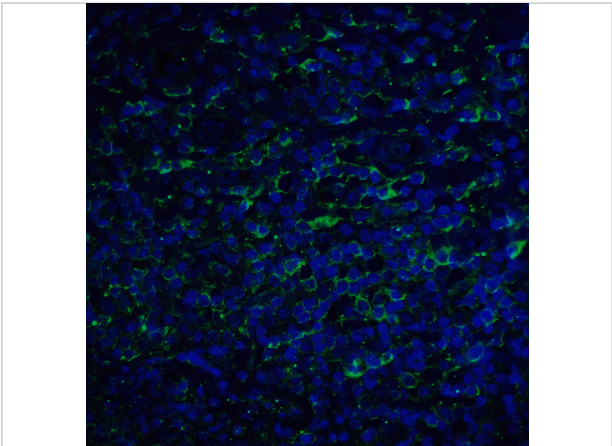
Immunocytochemistry of PD-L2 in transfected HEK293 cells with PD-L2 antibody at 5 µg/mL. Lower left: Immunocytochemistry in transfected HEK293 cells with control mouse IgG antibody at 5 µg/mL.



PDL2 Antibody [7C7] 3

Immunofluorescence of PD-L2 in transfected HEK293 cells with PD-L2 antibody at 20 µg/mL.

Green: PDL2 Antibody [7C7] (RF16023)  
Blue: DAPI staining



PDL2 Antibody [7C7] 4

Immunofluorescence of PD-L2 in human tonsil tissue with PD-L2 antibody at 20 µg/mL.

Green: PDL2 Antibody [7C7] (RF16023)  
Blue: DAPI staining

Disclaimer

Disclaimer	Optimal dilutions/concentrations should be determined by the end user. The information provided is a guideline for product use. This product is for research use only.
------------	--

For research use only. For additional information, visit ProSci's [Terms and Conditions Page](#).