

SARS-CoV-2 (COVID-19) Spike S2 Antibody [4F10]

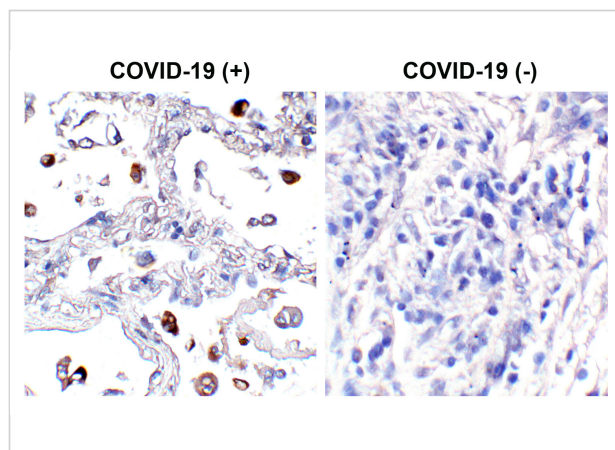
CATALOG NUMBER: PM-9428

Specifications

Host Species	Mouse
Species Reactivity	Virus
Homology	Predicted reactivity based on immunogen sequence: SARS-CoV Spike proteins: (100%)
Immunogen	Anti-SARS-CoV-2 (COVID-19) Spike S2 antibody (PM-9428) was raised against a peptide corresponding to 20 amino acids near the carboxy terminus of SARS-CoV-2 (COVID-19) Spike glycoprotein. The immunogen is located within the last 50 amino acids of SARS-CoV-2 (COVID-19) Spike protein.
Conjugate	Unconjugated
Tested Applications	ELISA, IF, IHC-P, WB
User Note	Optimal dilutions for each application to be determined by the researcher.

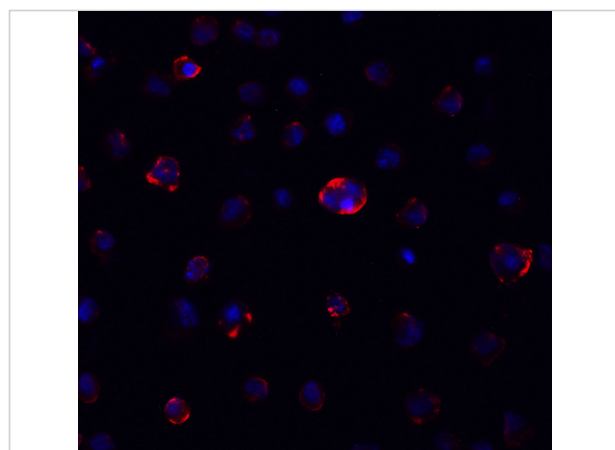
Properties

Purification	SARS-CoV-2 (COVID-19) Spike Antibody is affinity chromatography purified via peptide column.
Clonality	Monoclonal
Isotype	IgG1
Physical State	Liquid
Buffer	SARS-CoV-2 (COVID-19) Spike Antibody is supplied in PBS containing 0.02% sodium azide.
Concentration	1 mg/mL
Storage Conditions	SARS-CoV-2 (COVID-19) Spike S2 antibody can be stored at 4°C for three months and -20°C, stable for up to one year. As with all antibodies care should be taken to avoid repeated freeze thaw cycles. Antibodies should not be exposed to prolonged high temperatures.



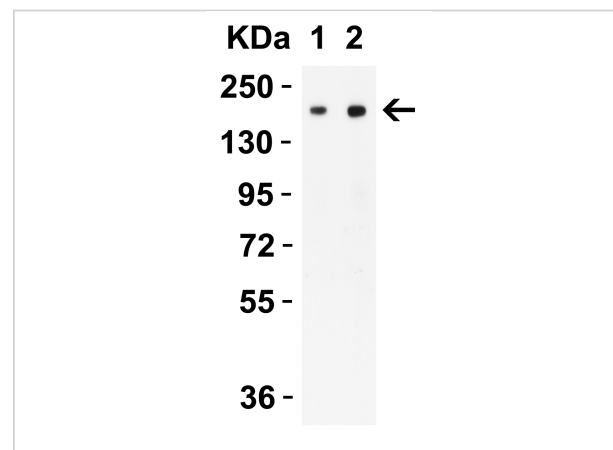
SARS-CoV-2 (COVID-19) Spike S2 Antibody [4F10] 1

Figure 1 Immunohistochemistry Validation of SARS-CoV-2 (COVID-19) Spike in COVID-19 Patient Lung
Immunohistochemical analysis of paraffin-embedded COVID-19 patient lung tissue ...



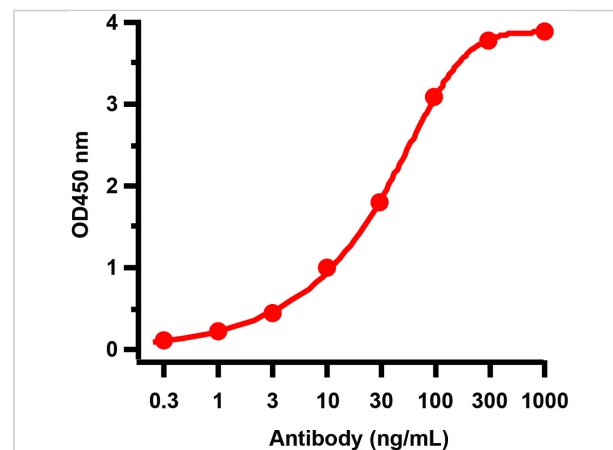
SARS-CoV-2 (COVID-19) Spike S2 Antibody [4F10] 3

Figure 3 Immunofluorescence Validation of SARS-CoV-2 (COVID-19) Spike in 293T Cells
Immunofluorescent analysis of 4% paraformaldehyde-fixed 293T cells labeling SARS-CoV-2 (COVID-19) Spike S2 antibody [4F10] 3 ...



SARS-CoV-2 (COVID-19) Spike S2 Antibody [4F10] 2

Figure 2 Overexpression Validation in Spike Transfected 293 Cells
Loading: 5 µg per lane of 293 cell lysate. Antibodies: SARS-CoV-2 (COVID-19) Spike S2, PM-9428, 1h incubation a...



SARS-CoV-2 (COVID-19) Spike S2 Antibody [4F10] 4

Figure 4 ELISA Test
Antibodies: SARS-CoV-2 (COVID-19) Spike S2 antibody, PM-9428 (1 µg/mL). A direct ELISA was performed using immunogen or control peptide as coating antigen ...

Disclaimer

Disclaimer

Optimal dilutions/concentrations should be determined by the end user. The information provided is a guideline for product use. This product is for research use only.

For research use only. For additional information, visit ProSci's [Terms and Conditions Page](#).