



ProSci Incorporated
12170 Flint Place
Poway, CA 92064, USA
prosci-inc.com

P: +1 (888) 513-9525
Local: +1 (858) 513-2638
Fax: +1 (858) 513-2692

customercare@prosci-inc.com
techsupport@prosci-inc.com

HIV-1 p24 Antibody [8G9]

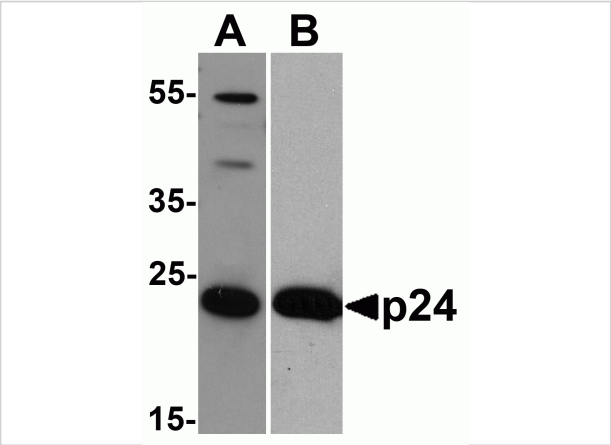
CATALOG NUMBER: PM-6335

Specifications

Host Species	Mouse
Species Reactivity	Virus
Immunogen	Mouse monoclonal HIV-1 p24 antibody was raised against a recombinant full-length HIV-1 p24 protein.
Conjugate	Unconjugated
Tested Applications	ELISA, WB
User Note	Optimal dilutions for each application to be determined by the researcher.
Specificity	By Western blot, anti-HIV-1 p24 antibody detects a ~24 kDa, a ~41 kDa, and a ~55 kDa protein, corresponding to HIV-1 p24 and to its precursors p41 and p55, respectively, in HIV-1 samples.
Predicted Molecular Weight	Predicted: 24, 41, 55 kDa

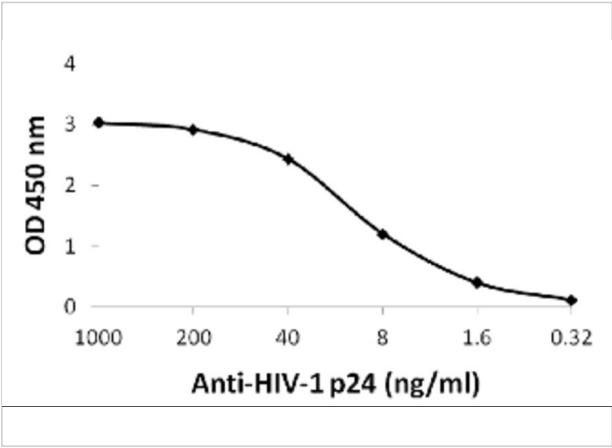
Properties

Purification	HIV-1 p24 Monoclonal Antibody is Protein A purified.
Clonality	Monoclonal
Isotype	IgG1
Physical State	Liquid
Buffer	HIV-1 p24 Monoclonal Antibody is supplied in PBS containing 0.02% sodium azide.
Concentration	1 mg/mL
Storage Conditions	HIV-1 p24 Monoclonal Antibody can be stored at 4°C for three months and -20°C, stable for up to one year.



HIV-1 p24 Antibody [8G9] 1

Western blot analysis of 20 ng of (A) viral p24 and (B) recombinant p24 with anti-HIV-1 p24 antibody PM-6335 at (A) 0.5 µg/mL and (B) 0.2 µg/mL, respectively.



HIV-1 p24 Antibody [8G9] 2

Titration ELISA of anti-HIV-1 p24 antibody PM-6335 with 100 ng of recombinant HIV-1 p24 protein.

Disclaimer

Disclaimer	Optimal dilutions/concentrations should be determined by the end user. The information provided is a guideline for product use. This product is for research use only.
------------	--

For research use only. For additional information, visit ProSci's [Terms and Conditions Page](#).