

## VISA Antibody

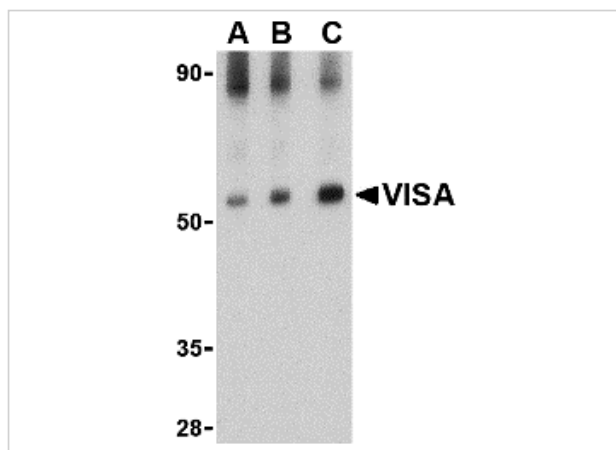
CATALOG NUMBER: 4055

### Specifications

Host Species	Rabbit
Species Reactivity	Human, Mouse, Rat
Immunogen	VISA antibody was raised against a 17 amino acid synthetic peptide from near the center of human VISA. The immunogen is located within amino acids 130 - 180 of VISA.
Conjugate	Unconjugated
Tested Applications	ELISA, IF, IHC-P, WB
User Note	Optimal dilutions for each application to be determined by the researcher.

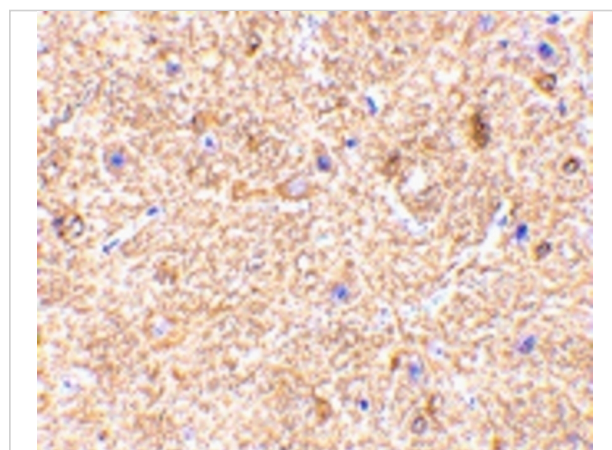
### Properties

Purification	VISA Antibody is affinity chromatography purified via peptide column.
Clonality	Polyclonal
Isotype	IgG
Physical State	Liquid
Buffer	VISA Antibody is supplied in PBS containing 0.02% sodium azide.
Concentration	1 mg/mL
Storage Conditions	VISA antibody can be stored at 4°C for three months and -20°C, stable for up to one year. As with all antibodies care should be taken to avoid repeated freeze thaw cycles. Antibodies should not be exposed to prolonged high temperatures.



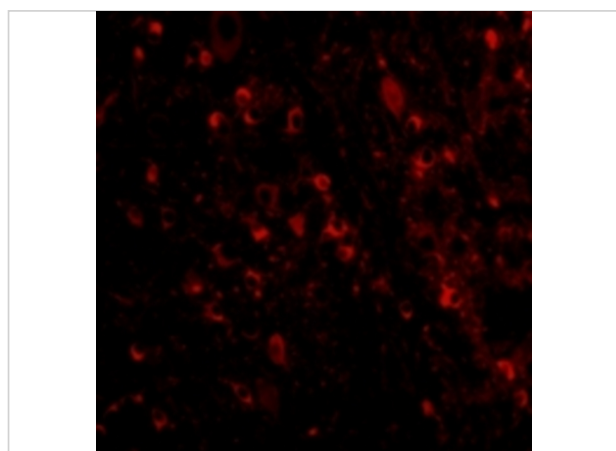
### VISA Antibody 1

Western blot analysis of VISA in rat brain tissue lysate with VISA antibody at (A) 0.5, (B) 1 and (C) 2  $\mu\text{g/mL}$ .



### VISA Antibody 2

Immunohistochemistry of VISA in mouse brain tissue with VISA antibody at 2.5  $\mu\text{g/mL}$ .



### VISA Antibody 3

Immunofluorescence of VISA in Mouse Brain cells with VISA antibody at 20  $\mu\text{g/mL}$ .

## Disclaimer

#### Disclaimer

Optimal dilutions/concentrations should be determined by the end user. The information provided is a guideline for product use. This product is for research use only.

For research use only. For additional information, visit ProSci's [Terms and Conditions Page](#).