



ProSci Incorporated  
12170 Flint Place  
Poway, CA 92064, USA  
prosci-inc.com

P: +1 (888) 513-9525  
Local: +1 (858) 513-2638  
Fax: +1 (858) 513-2692

customercare@prosci-inc.com  
techsupport@prosci-inc.com

## PD-1 Antibody [12A7D7]

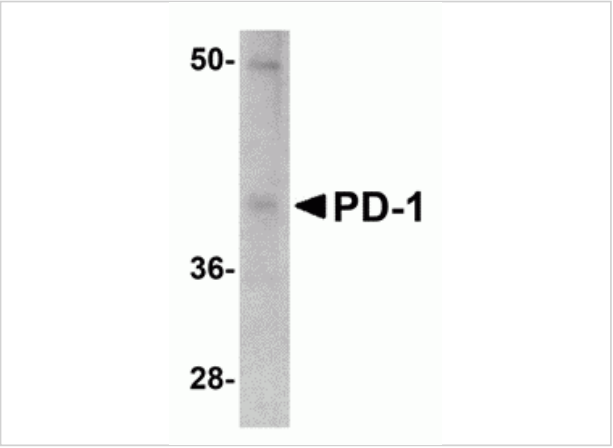
CATALOG NUMBER: PM-5179

### Specifications

Host Species	Mouse
Species Reactivity	Human, Mouse, Rat
Immunogen	A ~150 amino acid recombinant protein from near the amino terminus of mouse PD-1.
Conjugate	Unconjugated
Tested Applications	ELISA, IHC-P, WB
User Note	Optimal dilutions for each application to be determined by the researcher.

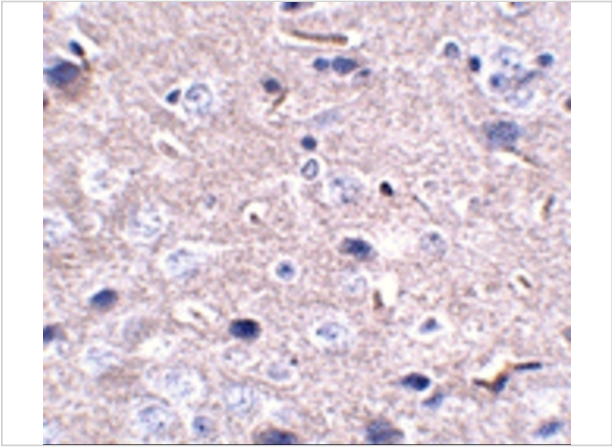
### Properties

Purification	PD-1 Monoclonal Antibody is Protein A purified.
Clonality	Monoclonal
Isotype	IgG1
Physical State	Liquid
Buffer	PD-1 Monoclonal Antibody is supplied in PBS containing 0.02% sodium azide.
Concentration	1 mg/mL
Storage Conditions	PD-1 Antibody [12A7D7] can be stored at 4°C, stable for up to one year. Antibodies should not be exposed to prolonged high temperatures.



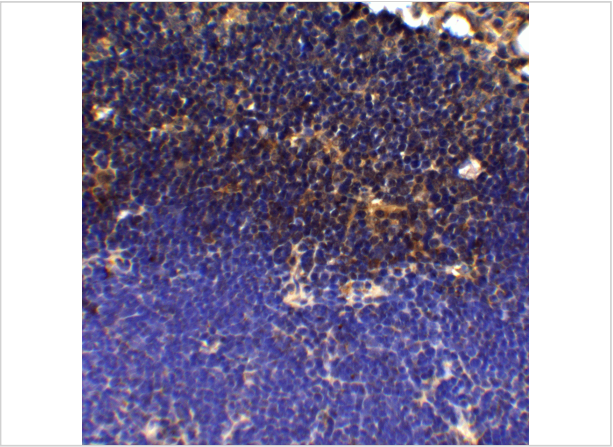
PD-1 Antibody [12A7D7] 1

Western blot analysis of PD-1 in A-20 cell lysate with PD-1 antibody at 1 µg/mL.



PD-1 Antibody [12A7D7] 2

Immunohistochemistry of PD-1 in mouse brain tissue with PD-1 antibody at 2.5 µg/mL.



PD-1 Antibody [12A7D7] 3

Immunohistochemistry of PD-1 in mouse thymus tissue with PD-1 antibody at 5 µg/mL.

Disclaimer

Disclaimer	Optimal dilutions/concentrations should be determined by the end user. The information provided is a guideline for product use. This product is for research use only.
------------	--

For research use only. For additional information, visit ProSci's [Terms and Conditions Page](#).