



ProSci Incorporated  
12170 Flint Place  
Poway, CA 92064, USA  
prosci-inc.com

P: +1 (888) 513-9525  
Local: +1 (858) 513-2638  
Fax: +1 (858) 513-2692

customercare@prosci-inc.com  
techsupport@prosci-inc.com

## MD-2 Antibody [1A2E3]

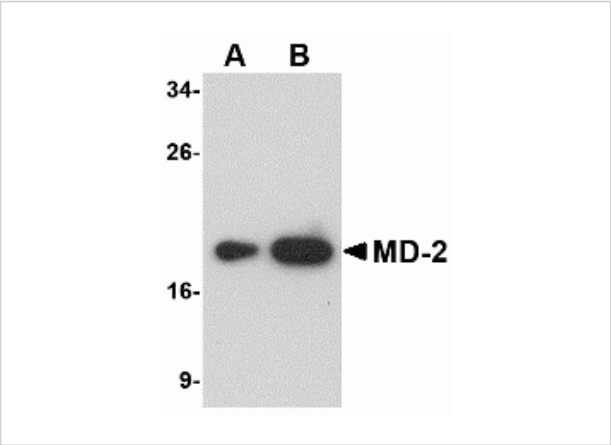
CATALOG NUMBER: PM-4847

### Specifications

Host Species	Mouse
Species Reactivity	Human, Mouse, Rat
Immunogen	Mouse monoclonal MD-2 antibody was raised against a recombinant protein corresponding to amino acids 2 to 160 of human MD-2.
Conjugate	Unconjugated
Tested Applications	ELISA, ICC, IF, IHC-P, WB
User Note	Optimal dilutions for each application to be determined by the researcher.

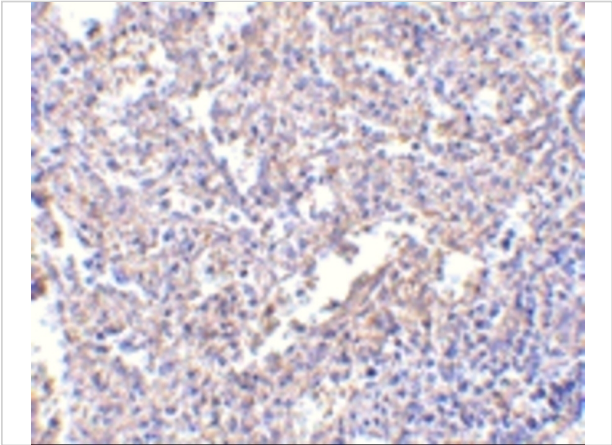
### Properties

Purification	MD-2 Monoclonal Antibody is Protein A purified.
Clonality	Monoclonal
Isotype	IgG1
Physical State	Liquid
Buffer	MD-2 Monoclonal Antibody is supplied in PBS containing 0.02% sodium azide.
Concentration	1 mg/mL
Storage Conditions	MD-2 monoclonal antibody can be stored at -20°C, stable for one year.



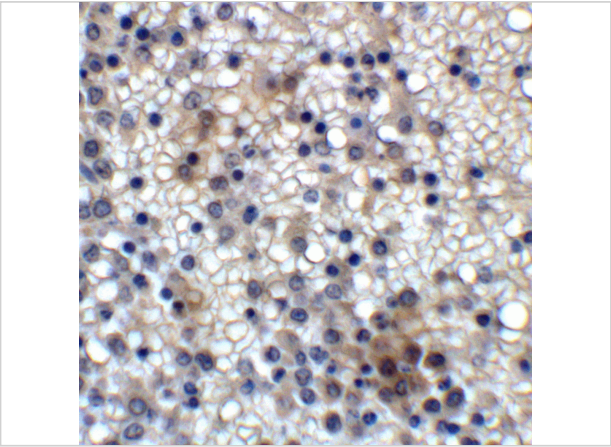
MD-2 Antibody [1A2E3] 1

Western blot analysis of (A) 25 and (B) 125 ng of MD-2 recombinant protein with MD-2 antibody at 1 µg/mL.



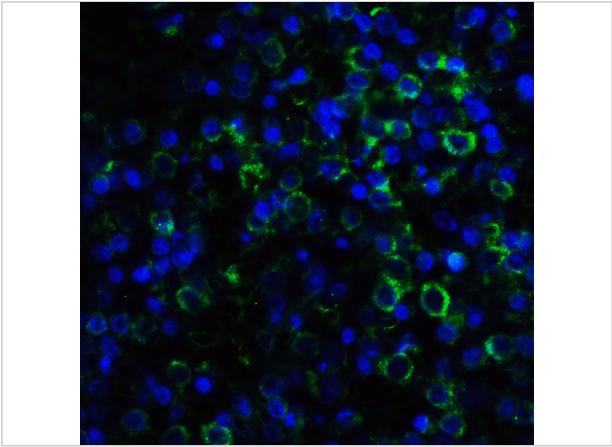
MD-2 Antibody [1A2E3] 2

Immunohistochemistry of MD-2 in human spleen with MD-2 antibody at 2.5 µg/mL.



MD-2 Antibody [1A2E3] 3

Immunohistochemistry of MD-2 in human spleen with MD-2 Antibody at 2 µg/mL.



MD-2 Antibody [1A2E3] 4

Immunofluorescence of MD-2 in human spleen with MD-2 Antibody at 20 µg/mL.

Disclaimer

Disclaimer	Optimal dilutions/concentrations should be determined by the end user. The information provided is a guideline for product use. This product is for research use only.
------------	--

For research use only. For additional information, visit ProSci's [Terms and Conditions Page](#).