

DC-SIGN Antibody [8B6]

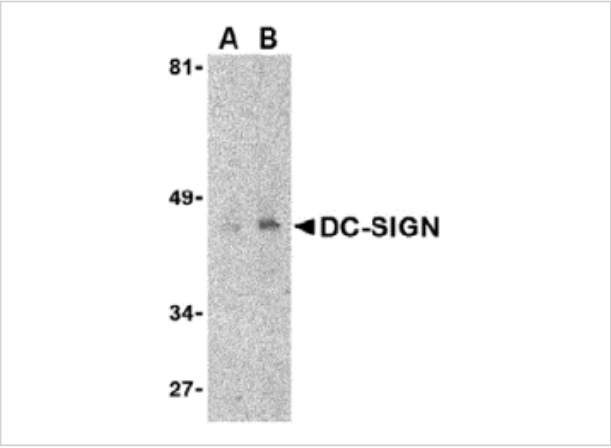
CATALOG NUMBER: PM-2348

Specifications

Host Species	Mouse
Species Reactivity	Human
Immunogen	A recombinant His-tagged protein fragment corresponding to the extracellular region of human DC-SIGN.
Conjugate	Unconjugated
Tested Applications	ELISA, IHC-P, WB
User Note	Optimal dilutions for each application to be determined by the researcher.

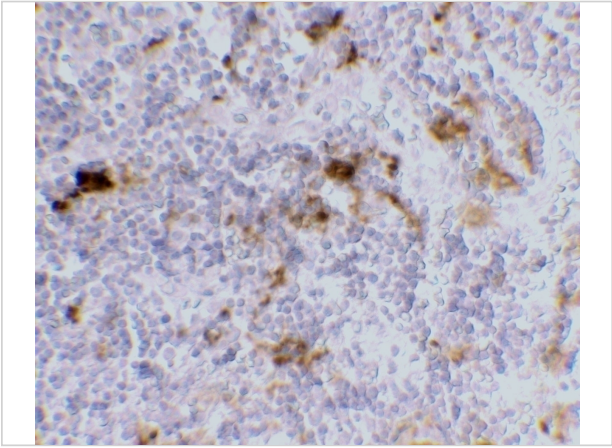
Properties

Purification	DC-SIGN Monoclonal Antibody is immunoaffinity chromatography purified IgG.
Clonality	Monoclonal
Isotype	IgG1,k
Physical State	Liquid
Buffer	DC-SIGN Monoclonal Antibody is supplied in PBS containing 0.02% sodium azide.
Concentration	1 mg/mL
Storage Conditions	DC-SIGN monoclonal antibody can be stored at -20°C, stable for one year.



DC-SIGN Antibody [8B6] 1

Western blot detection of DC-SIGN in human uterus tissue lysate at (A) 1 and (B) 2 µg/mL.



DC-SIGN Antibody [8B6] 2

Immunohistochemistry of DC-SIGN in human lymph node tissue with DC-SIGN antibody at 10 µg/mL.

Disclaimer

Disclaimer	Optimal dilutions/concentrations should be determined by the end user. The information provided is a guideline for product use. This product is for research use only.
------------	--

For research use only. For additional information, visit ProSci's [Terms and Conditions Page](#).