

SARS-CoV-2 (COVID-19) Spike 156-157EFdel Antibody (Delta Variant)

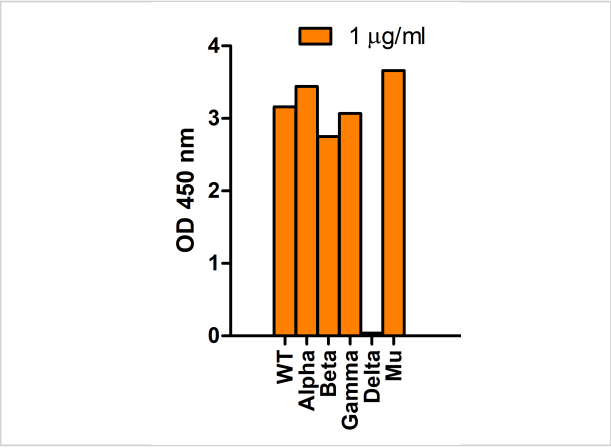
CATALOG NUMBER: 9689

Specifications

Host Species	Rabbit
Species Reactivity	Virus
Homology	Predicted reactivity based on immunogen sequence: SARS-CoV Spike proteins: (45.5%)
Immunogen	<p>Anti-SARS-CoV-2 Spike 156-157EFdel (Delta Variant) antibody (9689) was raised against a peptide corresponding to 11 amino acids near the amino terminal domain of SARS-CoV-2 Delta variant (B.1.617.2) Spike protein.</p> <p>The immunogen is located within 130-180 amino acids of SARS-CoV-2 Delta variant (B.1.617.2) Spike protein.</p>
Conjugate	Unconjugated
Tested Applications	ELISA, WB
User Note	Optimal dilutions for each application to be determined by the researcher.
Specificity	It can only detect SARS-CoV-2 Delta Variant (B.1.617.2) Spike S1 protein and does not cross-react with the spike protein of other variants.

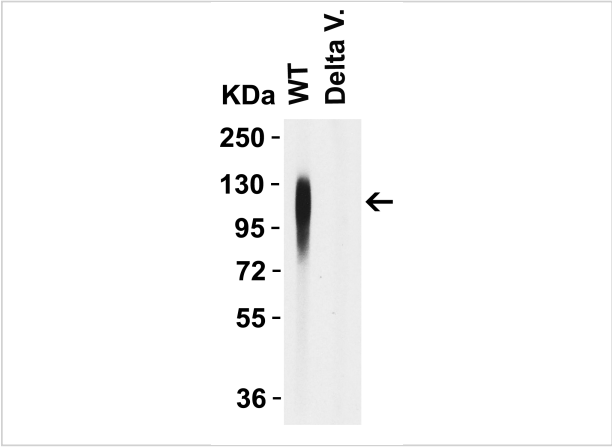
Properties

Purification	Anti-SARS-CoV-2 Spike Delta Variant antibody is affinity chromatography purified via peptide column.
Clonality	Polyclonal
Isotype	IgG
Physical State	Liquid
Buffer	SARS-CoV-2 Spike Delta Variant antibody is supplied in PBS containing 0.02% sodium azide.
Concentration	1 mg/mL
Storage Conditions	SARS-CoV-2 Spike Delta Variant antibody can be stored at 4°C for three months and -20°C, stable for up to one year. As with all antibodies care should be taken to avoid repeated freeze thaw cycles. Antibodies should not be exposed to prolonged high temperatures.



SARS-CoV-2 (COVID-19) Spike 156-157EFdel Antibody (Delta Variant) 1

Figure 1 SARS-Cov-2 Spike 156-157EFdel (Delta Variant) Antibodies Specifically Detect Delta Variant Spike S1 Protein in an ELISA
Coating Antigen: SARS-CoV-2 spike S1 proteins W...



SARS-CoV-2 (COVID-19) Spike 156-157EFdel Antibody (Delta Variant) 2

Figure 2 WB Validation of of Delta Variant Spike S1 Antibodies with SARS-CoV-2 Delta Variant Spike S1 Protein
Loading: 50 ng of SARS-CoV-2 spike S1 proteins, including WT and D...

Disclaimer

Disclaimer	Optimal dilutions/concentrations should be determined by the end user. The information provided is a guideline for product use. This product is for research use only.
------------	--

For research use only. For additional information, visit ProSci's [Terms and Conditions Page](#).