

SARS-CoV-2 (COVID-19) Spike 156-157EF Antibody

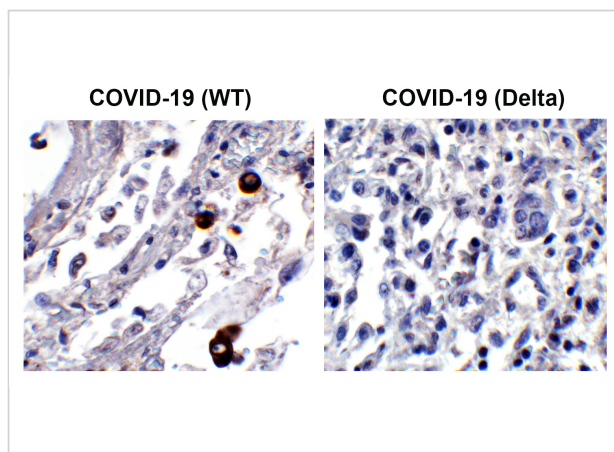
CATALOG NUMBER: 9685

Specifications

Host Species	Rabbit
Species Reactivity	Virus
Homology	Predicted reactivity based on immunogen sequence: SARS-CoV Spike proteins: (38.5%)
Immunogen	Anti-SARS-CoV-2 Spike 156-157EF antibody (9685) was raised against a peptide corresponding to 13 amino acids near the amino terminal domain of SARS-CoV-2 Spike protein. The immunogen is located within 130-180 amino acids of SARS-CoV-2 Spike protein.
Conjugate	Unconjugated
Tested Applications	ELISA, IHC-P, WB
User Note	Optimal dilutions for each application to be determined by the researcher.

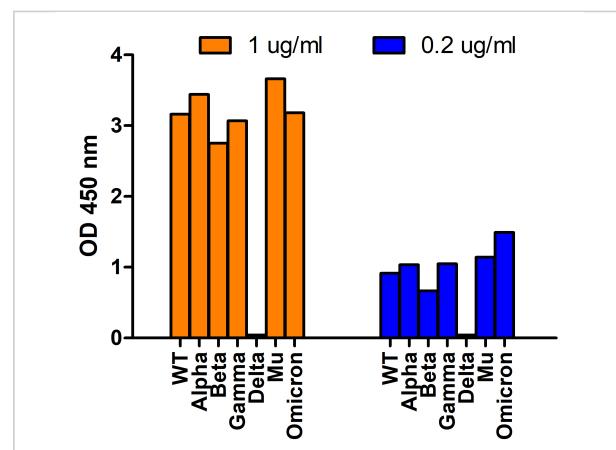
Properties

Purification	Anti-SARS-CoV-2 Spike 156-157EF antibody is affinity chromatography purified via peptide column.
Clonality	Polyclonal
Isotype	IgG
Physical State	Liquid
Buffer	SARS-CoV-2 Spike P26S antibody is supplied in PBS containing 0.02% sodium azide.
Concentration	1 mg/mL
Storage Conditions	SARS-CoV-2 Spike 156-157EF antibody can be stored at 4°C for three months and -20°C, stable for up to one year. As with all antibodies care should be taken to avoid repeated freeze thaw cycles. Antibodies should not be exposed to prolonged high temperatures.



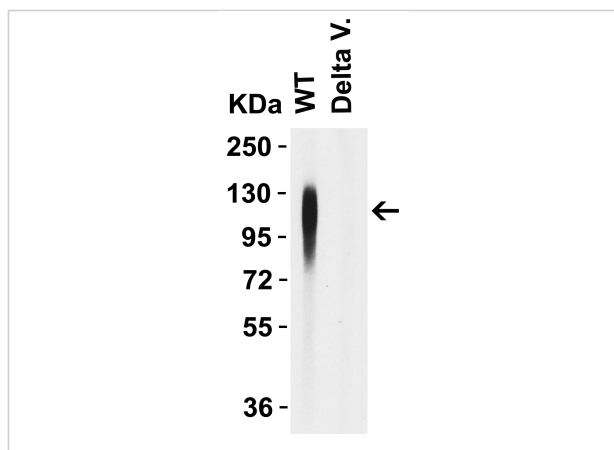
SARS-CoV-2 (COVID-19) Spike 156-157EF Antibody 1

Figure 1 Immunohistochemistry Validation of Spike in Delta Variant COVID-19 Patient Lung Tissue
Immunohistochemical analysis of paraffin-embedded patient lung tissue using an...



SARS-CoV-2 (COVID-19) Spike 156-157EF Antibody 2

Figure 2 SARS-Cov-2 Spike 156-157EF Antibodies Specifically Do Not Recognize Delta Variant Spike S1 Protein in an ELISA
Coating Antigen: SARS-CoV-2 spike S1 proteins WT, alpha ...



SARS-CoV-2 (COVID-19) Spike 156-157EF Antibody 2

Figure 3 WB Validation of of Spike 156-157EF Antibodies with SARS-CoV-2 Delta Variant Spike S1 Protein
Loading: 50 ng of SARS-CoV-2 spike S1 proteins, including WT and Delta va...

Disclaimer

Disclaimer

Optimal dilutions/concentrations should be determined by the end user. The information provided is a guideline for product use. This product is for research use only.

For research use only. For additional information, visit ProSci's [Terms and Conditions Page](#).