

MNDA (IN) Antibody

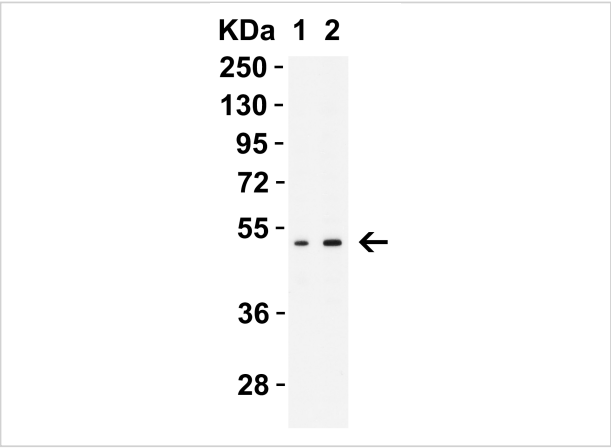
CATALOG NUMBER: 9647

Specifications

Host Species	Rabbit
Species Reactivity	Human
Homology	Predicted species reactivity based on immunogen sequence: Gorilla (93%), chimpanzee (100%), Monkey (87%)
Immunogen	Anti-MNDA antibody (9647) was raised against a peptide corresponding to 15 amino acids near the center of human MNDA. The immunogen is located within 110-160 amino acids of MNDA.
Conjugate	Unconjugated
Tested Applications	ELISA, IHC, WB
User Note	Optimal dilutions for each application to be determined by the researcher.
Predicted Molecular Weight	Predicted: 46kD Observed: 46 kD

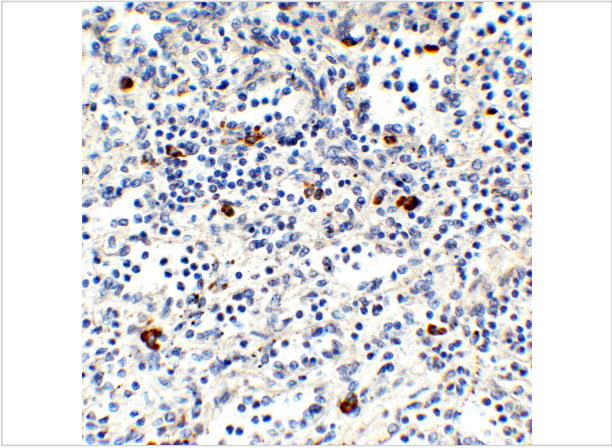
Properties

Purification	MNDA Antibody is affinity chromatography purified via peptide column.
Clonality	Polyclonal
Isotype	IgG
Physical State	Liquid
Buffer	MNDA Antibody is supplied in PBS containing 0.02% sodium azide.
Concentration	1 mg/mL
Storage Conditions	MNDA antibody can be stored at 4°C for three months and -20°C, stable for up to one year. As with all antibodies care should be taken to avoid repeated freeze thaw cycles. Antibodies should not be exposed to prolonged high temperatures.



MNDA (IN) Antibody 1

Figure 1 Western Blot Validation in Human THP-1 Cells
Loading: 15 µg of lysate per lane. Antibodies: MNDA 9647, 1h incubation at RT in 5% NFDM/TBST. Secondary: Goat anti-rabb...



MNDA (IN) Antibody 2

Figure 2 Immunohistochemistry Validation of MNDA in Human Spleen
Immunohistochemical analysis of paraffin-embedded human spleen tissue using anti-MNDA antibody (9647) at 1 µg/m...

Disclaimer

Disclaimer	Optimal dilutions/concentrations should be determined by the end user. The information provided is a guideline for product use. This product is for research use only.
------------	--

For research use only. For additional information, visit ProSci's [Terms and Conditions Page](#).