

## SARS-CoV-2 (COVID-19) Membrane Antibody (HRP)

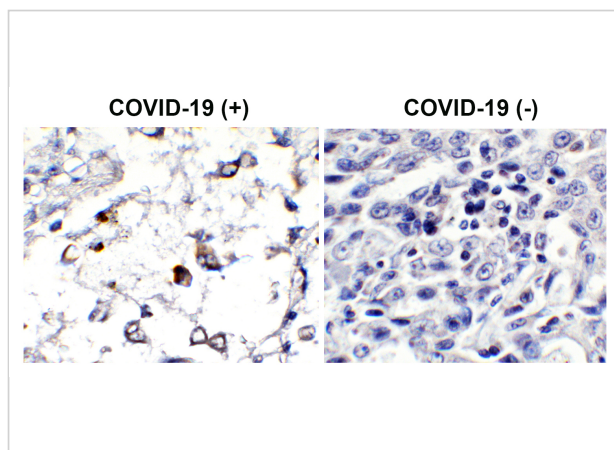
CATALOG NUMBER: 9157-HRP

### Specifications

<b>Host Species</b>	Rabbit
<b>Species Reactivity</b>	Virus
<b>Homology</b>	Predicted reactivity based on immunogen sequence: SARS-CoV Matrix protein: (100%)
<b>Immunogen</b>	Anti-SARS-CoV-2 (COVID-19) Membrane antibody (HRP) ( <b>9157</b> ) was raised against a peptide corresponding to 13 amino acids near the center of SARS-CoV-2 (COVID-19) Membrane protein. The immunogen is located between 130-180 amino acids of the SARS-CoV-2 (COVID-19) Membrane protein.
<b>Conjugate</b>	HRP
<b>Tested Applications</b>	ELISA, IHC
<b>User Note</b>	Optimal dilutions for each application to be determined by the researcher.

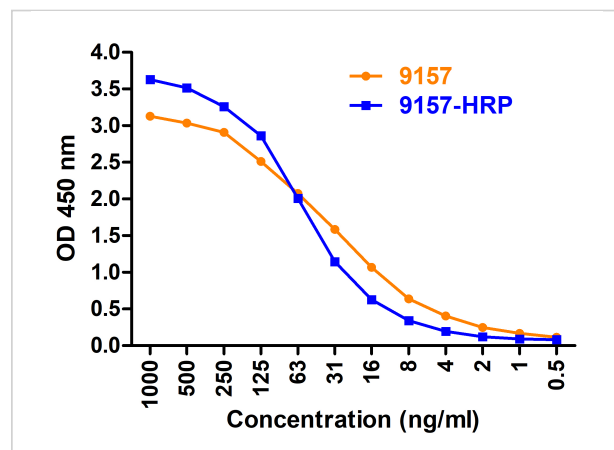
### Properties

<b>Purification</b>	SARS-CoV-2 (COVID-19) Membrane Antibody is affinity chromatography
<b>Clonality</b>	Polyclonal
<b>Isotype</b>	IgG
<b>Physical State</b>	Liquid
<b>Buffer</b>	SARS-CoV-2 (COVID-19) Membrane Antibody is supplied in PBS containing 0.02% sodium azide.
<b>Concentration</b>	1 mg/mL
<b>Storage Conditions</b>	SARS-CoV-2 (COVID-19) Membrane antibody can be stored at 4 ° C for three months and -20 ° C, stable for up to one year. As with all antibodies care should be taken to avoid repeated freeze thaw cycles. Antibodies should not be exposed to prolonged high temperatures.



## SARS-CoV-2 (COVID-19) Membrane Antibody (HRP) 1

**Figure 1 Immunohistochemistry Validation of SARS-CoV-2 (COVID-19) Membrane Protein in COVID-19 Patient Lung**  
Immunohistochemical analysis of paraffin-embedded COVID-19 patient l...



## SARS-CoV-2 (COVID-19) Membrane Antibody (HRP) 1

**Figure 2 ELISA Validation**  
Coating Antigen: immunogen peptide, 9157P, 10 µg/mL, incubate at 4 °C overnight. Detection Antibodies: SARS-CoV-2 Spike antibody, 9157-HRP or 9157, dil...

## Disclaimer

### Disclaimer

Optimal dilutions/concentrations should be determined by the end user. The information provided is a guideline for product use. This product is for research use only.

For research use only. For additional information, visit ProSci's [Terms and Conditions Page](#).