

SARS-CoV-2 (COVID-19) Nucleocapsid Antibody

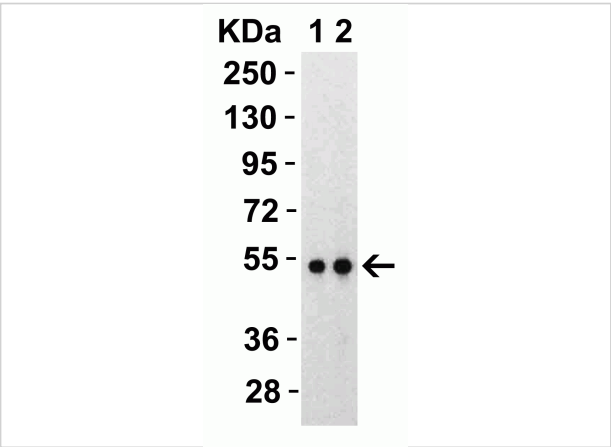
CATALOG NUMBER: 9103

Specifications

Host Species	Rabbit
Species Reactivity	Virus
Homology	Predicted reactivity based on immunogen sequence: SARS-CoV Nucleocapsid proteins: (100%)
Immunogen	Anti-SARS-CoV-2 (COVID-19) Nucleocapsid antibody (9103) was raised against a peptide corresponding to 17 amino acids near the carboxy terminus of SARS-CoV-2 (COVID-19) Nucleocapsid protein. The immunogen is located within 350-400 amino acids of SARS-CoV-2 (COVID-19) Nucleocapsid protein.
Conjugate	Unconjugated
Tested Applications	ELISA, WB
User Note	Optimal dilutions for each application to be determined by the researcher.

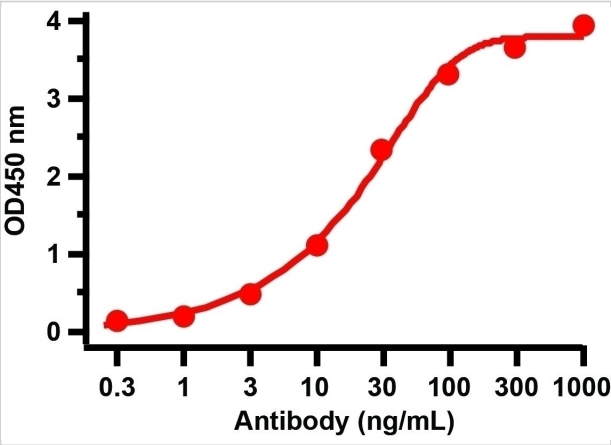
Properties

Purification	SARS-CoV-2 (COVID-19) Nucleocapsid Antibody is affinity chromatography purified via peptide column.
Clonality	Polyclonal
Isotype	IgG
Physical State	Liquid
Buffer	SARS-CoV-2 (COVID-19) Nucleocapsid Antibody is supplied in PBS containing 0.02% sodium azide.
Concentration	1 mg/mL
Storage Conditions	SARS-CoV-2 (COVID-19) Nucleocapsid antibody can be stored at 4°C for three months and -20°C, stable for up to one year. As with all antibodies care should be taken to avoid repeated freeze thaw cycles. Antibodies should not be exposed to prolonged high temperatures.



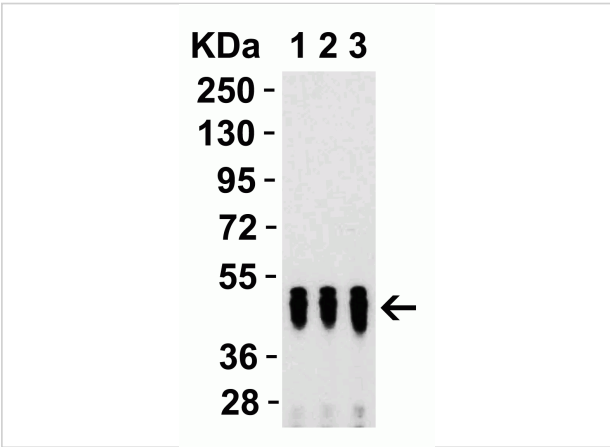
SARS-CoV-2 (COVID-19) Nucleocapsid Antibody 1

Figure 1 Western Blot Validation with SARS-CoV-2 (COVID-19) Nucleocapsid Recombinant Protein
 Loading: 30 ng per lane of SARS-CoV-2 (COVID-19) Nucleocapsid recombinant protein,...



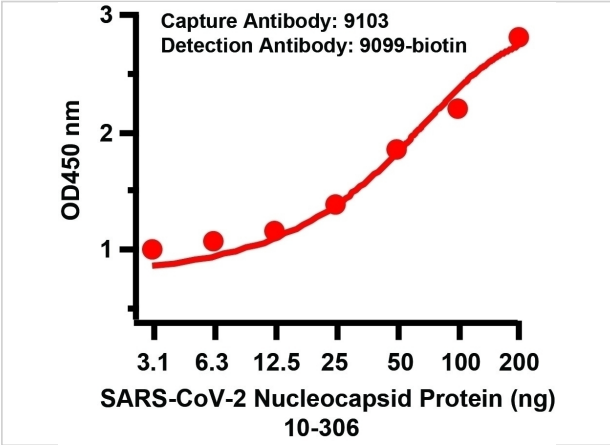
SARS-CoV-2 (COVID-19) Nucleocapsid Antibody 3

Figure 3 ELISA Validation with SARS-CoV-2 (COVID-19) Nucleocapsid Recombinant Protein
 Antibodies: SARS-CoV-2 (COVID-19) Nucleocapsid antibody, 9103 (1 µg/mL). A direct ELISA wa...



SARS-CoV-2 (COVID-19) Nucleocapsid Antibody 2

Figure 2 Western Blot Validation with SARS-CoV-2 (COVID-19) Nucleocapsid Recombinant Protein
 Loading: 50 ng per lane of SARS-CoV-2 (COVID-19) Nucleocapsid recombinant protein. ...



SARS-CoV-2 (COVID-19) Nucleocapsid Antibody 4

Figure 4 ELISA Validation of SARS-CoV-2 Nucleocapsid Antibody Pair
 A sandwich ELISA was performed using the anti-SARS-CoV-2 Nucleocapsid antibodies 9103 (10 µg/mL) as the ca...

Disclaimer

Disclaimer	Optimal dilutions/concentrations should be determined by the end user. The information provided is a guideline for product use. This product is for research use only.
-------------------	--

For research use only. For additional information, visit ProSci's [Terms and Conditions Page](#).