

SARS-CoV-2 (COVID-19) Spike RBD Antibody

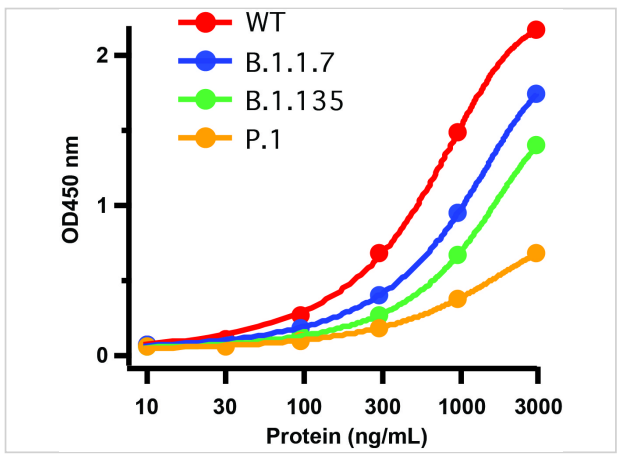
CATALOG NUMBER: 9087

Specifications

Host Species	Rabbit
Species Reactivity	Virus
Homology	Predicted reactivity based on immunogen sequence: SARS-CoV Spike proteins: (63%)
Immunogen	Anti-SARS-CoV-2 (COVID-19) Spike RBD antibody (9087) was raised against a peptide corresponding to 19 amino acids near the carboxy terminus of SARS-CoV-2 (COVID-19) Spike glycoprotein RBD. The immunogen is located within the last 50 amino acids of SARS-CoV-2 (COVID-19) Spike protein RBD.
Conjugate	Unconjugated
Tested Applications	ELISA, IF, IHC, WB
User Note	Optimal dilutions for each application to be determined by the researcher.

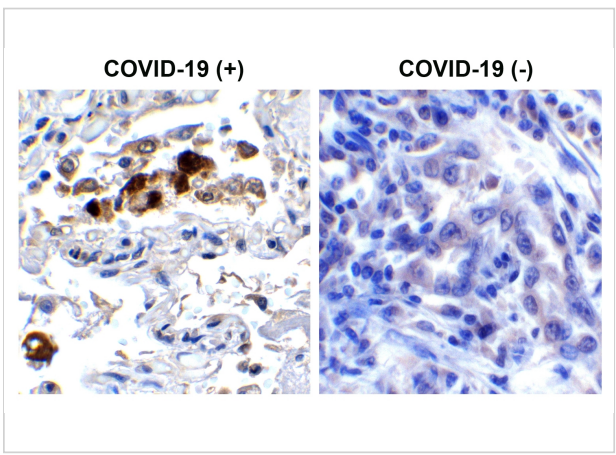
Properties

Purification	SARS-CoV-2 (COVID-19) Spike RBD antibody is affinity chromatography purified via peptide column.
Clonality	Polyclonal
Isotype	IgG
Physical State	Liquid
Buffer	SARS-CoV-2 (COVID-19) Spike RBD antibody is supplied in PBS containing 0.02% sodium azide.
Concentration	1 mg/mL
Storage Conditions	SARS-CoV-2 (COVID-19) Spike RBD antibody can be stored at 4°C up to one year. Antibodies should not be exposed to prolonged high temperatures.



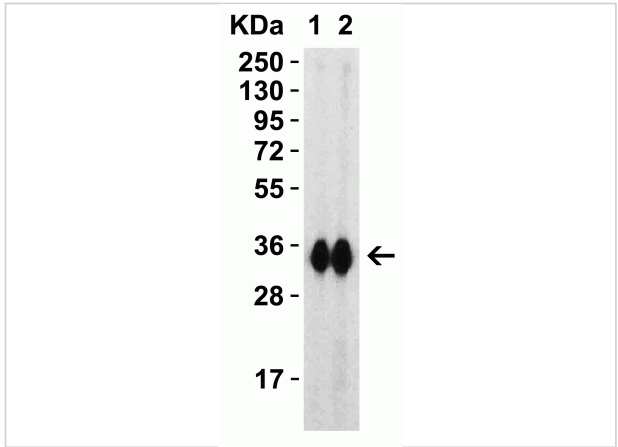
SARS-CoV-2 (COVID-19) Spike RBD Antibody 1

Figure 1 Detection of SARS-CoV-2 Variant Proteins with Spike RBD Antibodies by Direct ELISA
Coating Antigen: SARS-CoV-2 full length spike proteins, including WT, UK variant ...



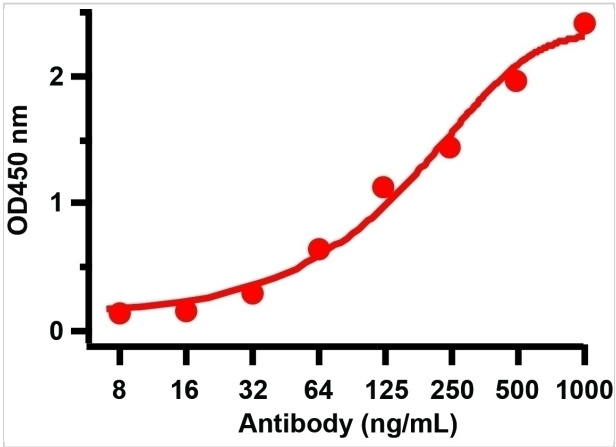
SARS-CoV-2 (COVID-19) Spike RBD Antibody 1

Figure 2 Immunohistochemistry Validation of SARS-CoV-2 (COVID-19) Spike RBD in COVID-19 Patient Lung
Immunohistochemical analysis of paraffin-embedded COVID-19 patient lung tis...



SARS-CoV-2 (COVID-19) Spike RBD Antibody 2

Figure 3 Western Blot Validation with SARS-CoV-2 (COVID-19) Spike RBD Recombinant Protein
Loading: 30 ng per lane of SARS-CoV-2 (COVID-19) Spike RBD recombinant protein, 10-30...



SARS-CoV-2 (COVID-19) Spike RBD Antibody 3

Figure 4 ELISA Validation with SARS-CoV-2 (COVID-19) Spike RBD Recombinant Protein
Antibodies: SARS-CoV-2 (COVID-19) Spike RBD antibody, 9087 (1 µg/mL). A direct ELISA was perf...

Disclaimer

Disclaimer	Optimal dilutions/concentrations should be determined by the end user. The information provided is a guideline for product use. This product is for research use only.
-------------------	--

For research use only. For additional information, visit ProSci's [Terms and Conditions Page](#).