

SUSD3 Antibody

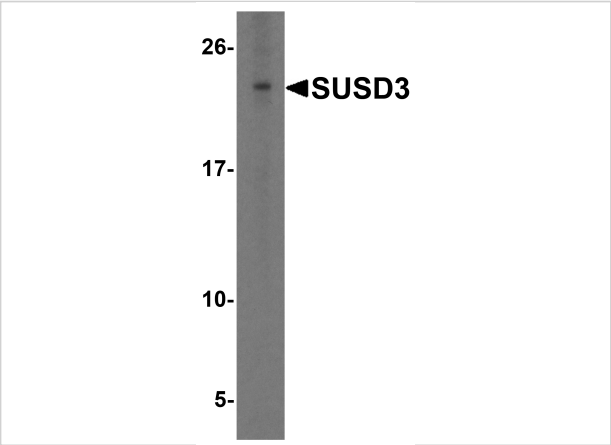
CATALOG NUMBER: 8475

Specifications

Host Species	Rabbit
Species Reactivity	Human, Mouse
Immunogen	SUSD3 antibody was raised against a 16 amino acid peptide from near the center of human SUSD3. The immunogen is located within amino acids 120 - 170 of SUSD3.
Conjugate	Unconjugated
Tested Applications	ELISA, ICC, WB
User Note	Optimal dilutions for each application to be determined by the researcher.
Specificity	SUSD3 antibody is human and mouse reactive. Multiple isoforms of SUSD3 are known to exist.
Predicted Molecular Weight	Predicted: 16, 22, 23, 28 kDa Observed: 23 kDa

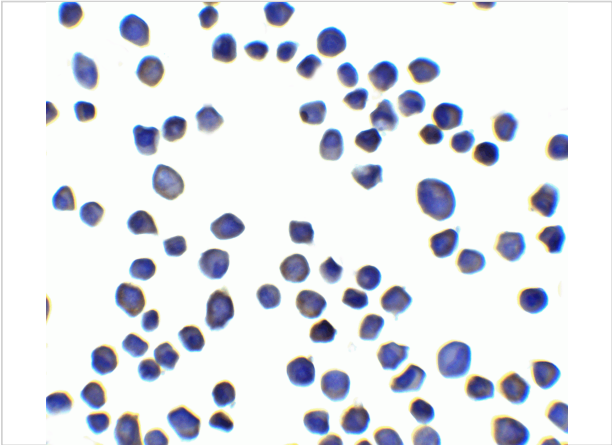
Properties

Purification	SUSD3 Antibody is affinity chromatography purified via peptide column.
Clonality	Polyclonal
Isotype	IgG
Physical State	Liquid
Buffer	SUSD3 Antibody is supplied in PBS containing 0.02% sodium azide.
Concentration	1 mg/mL
Storage Conditions	SUSD3 antibody can be stored at 4°C for three months and -20°C, stable for up to one year.



SUSD3 Antibody 1

Western blot analysis of SUSD3 in HeLa cell lysate with SUSD3 antibody at 1 µg/ml.



SUSD3 Antibody 2

Immunocytochemistry of SUSD3 in 3T3 cells with SUSD3 antibody at 5 µg/ml.

Disclaimer

Disclaimer	Optimal dilutions/concentrations should be determined by the end user. The information provided is a guideline for product use. This product is for research use only.
------------	--

For research use only. For additional information, visit ProSci's [Terms and Conditions Page](#).