

C18orf42 Antibody

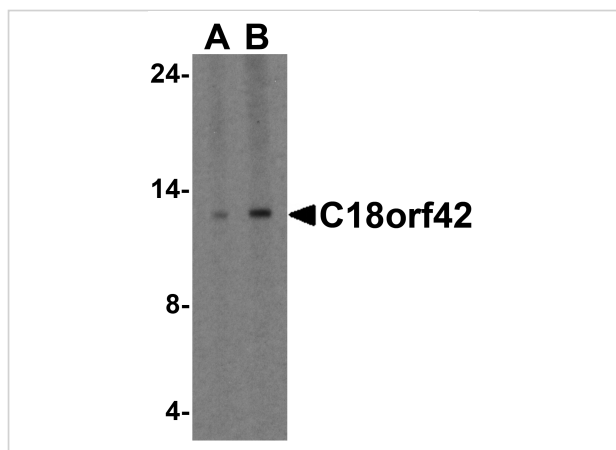
CATALOG NUMBER: 8471

Specifications

Host Species	Rabbit
Species Reactivity	Human
Immunogen	C18orf42 antibody was raised against a 16 amino acid peptide from near the center of human C18orf42. The immunogen is located within the last 50 amino acids of C18orf42.
Conjugate	Unconjugated
Tested Applications	ELISA, ICC, IF, WB
User Note	Optimal dilutions for each application to be determined by the researcher.
Specificity	C18orf42 antibody is human specific.
Predicted Molecular Weight	Predicted: 8 kDa Observed: 12 kDa

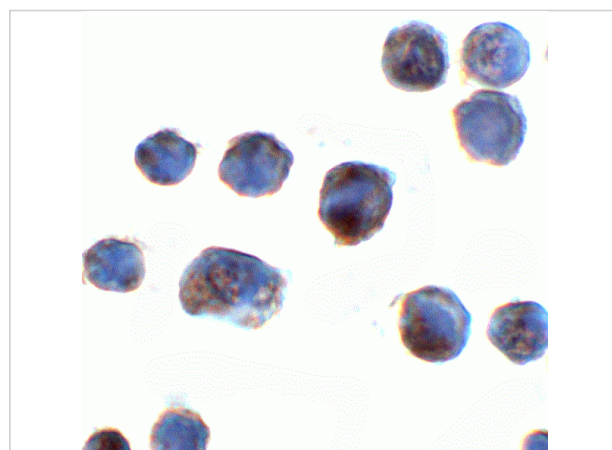
Properties

Purification	C18orf42 Antibody is affinity chromatography purified via peptide column.
Clonality	Polyclonal
Isotype	IgG
Physical State	Liquid
Buffer	C18orf42 Antibody is supplied in PBS containing 0.02% sodium azide.
Concentration	1 mg/mL
Storage Conditions	C18orf42 antibody can be stored at 4°C for three months and -20°C, stable for up to one year.



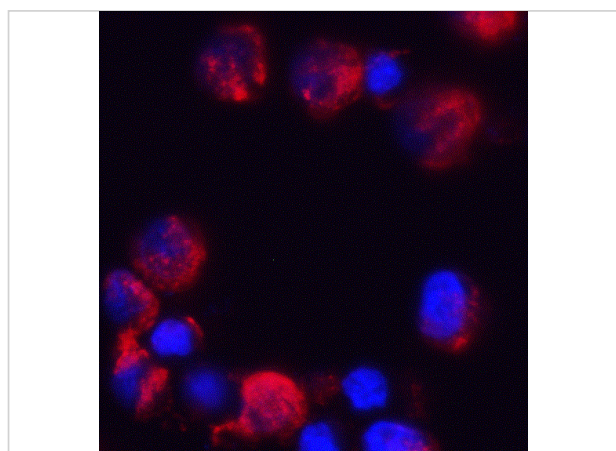
C18orf42 Antibody 1

Western blot analysis of C18orf42 in HeLa cell lysate with C18orf42 antibody at 1 µg/ml.



C18orf42 Antibody 2

Immunocytochemistry of C18orf42 in HeLa cells with C18orf42 antibody at 2 µg/mL.



C18orf42 Antibody 3

Immunofluorescence of C18orf42 in HeLa cells with C18orf42 antibody at 2 µg/mL.

Red: C18orf42 Antibody (8471)
Blue: DAPI staining

Disclaimer

Disclaimer

Optimal dilutions/concentrations should be determined by the end user. The information provided is a guideline for product use. This product is for research use only.

For research use only. For additional information, visit ProSci's [Terms and Conditions Page](#).