

PACS1 Antibody

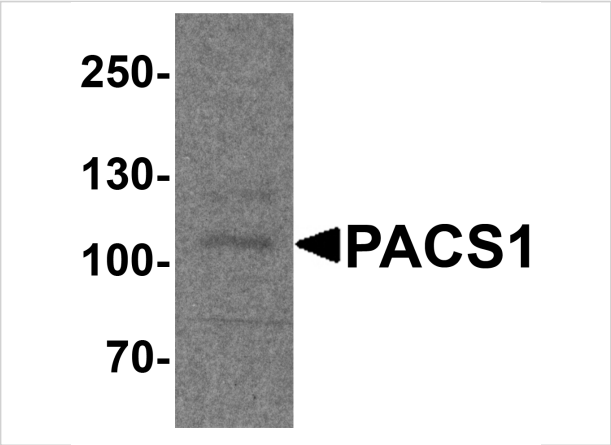
CATALOG NUMBER: 8187

Specifications

Host Species	Rabbit
Species Reactivity	Human, Mouse, Rat
Immunogen	PACS1 antibody was raised against a 17 amino acid peptide near the center of human PACS1. The immunogen is located within amino acids 430 - 480 of PACS1.
Conjugate	Unconjugated
Tested Applications	ELISA, IF, IHC-P, WB
User Note	Optimal dilutions for each application to be determined by the researcher.
Specificity	PACS1 antibody is human, mouse and rat reactive. Multiple isoforms of PACS1 are known to exist. PACS1 antibody is predicted to not cross-react with PACS2.
Predicted Molecular Weight	Predicted: 106 kDa Observed: 105 kDa

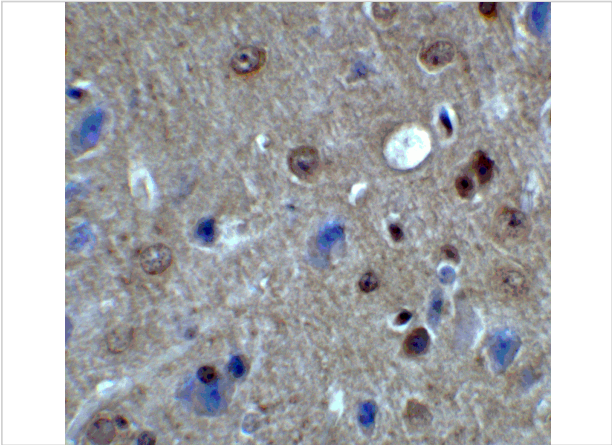
Properties

Purification	PACS1 antibody is affinity chromatography purified via peptide column.
Clonality	Polyclonal
Isotype	IgG
Physical State	Liquid
Buffer	PACS1 antibody is supplied in PBS containing 0.02% sodium azide.
Concentration	1 mg/mL
Storage Conditions	PACS1 antibody can be stored at 4°C for three months and -20°C, stable for up to one year.



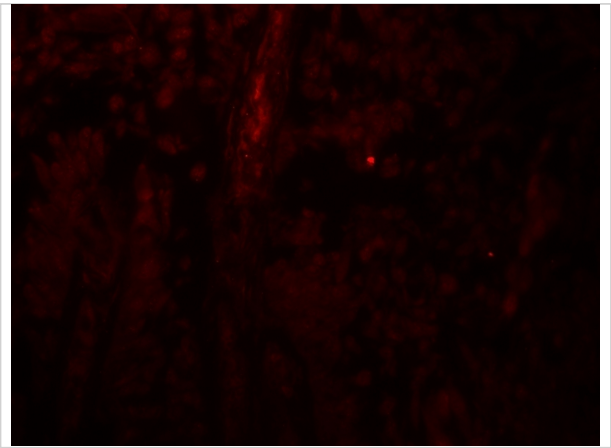
PACS1 Antibody 1

Western blot analysis of PACS1 in rat bladder tissue lysate with PACS1 antibody at 1 µg/ml.



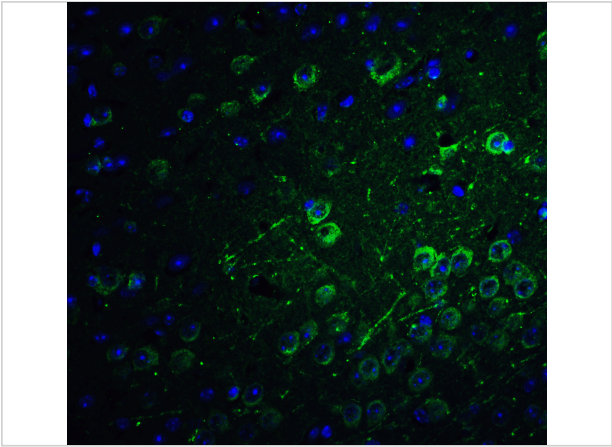
PACS1 Antibody 2

Immunohistochemistry of PACS1 in mouse brain tissue with PACS1 antibody at 2 µg/ml.



PACS1 Antibody 3

Immunofluorescence of PACS1 in human bladder tissue with PACS1 antibody at 20 µg/mL.



PACS1 Antibody 4

Immunofluorescence of PACS1 in mouse brain tissue with PACS1 antibody at 20 µg/ml.

Green: PACS1 Antibody (8187)
Blue: DAPI staining

Disclaimer

Disclaimer	Optimal dilutions/concentrations should be determined by the end user. The information provided is a guideline for product use. This product is for research use only.
------------	--

For research use only. For additional information, visit ProSci's [Terms and Conditions Page](#).