



ProSci Incorporated  
12170 Flint Place  
Poway, CA 92064, USA  
prosci-inc.com

P: +1 (888) 513-9525  
Local: +1 (858) 513-2638  
Fax: +1 (858) 513-2692

customercare@prosci-inc.com  
techsupport@prosci-inc.com

## Fn14 Antibody

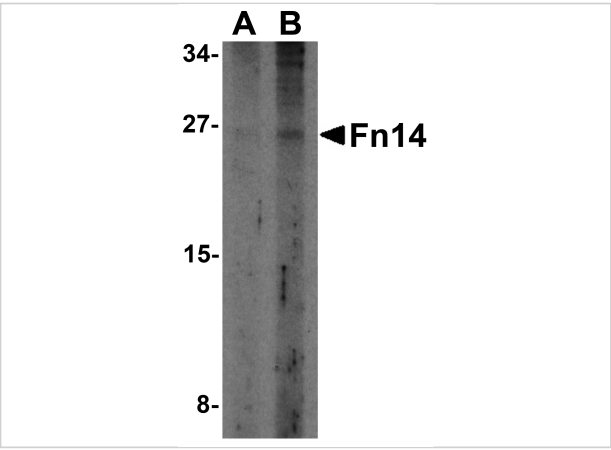
CATALOG NUMBER: 3951

### Specifications

Host Species	Rabbit
Species Reactivity	Human
Immunogen	Fn14 antibody was raised against a human IgG1 Fc-tagged Fn14 protein.
Conjugate	Unconjugated
Tested Applications	ELISA, IF, IHC-P, WB
User Note	Optimal dilutions for each application to be determined by the researcher.

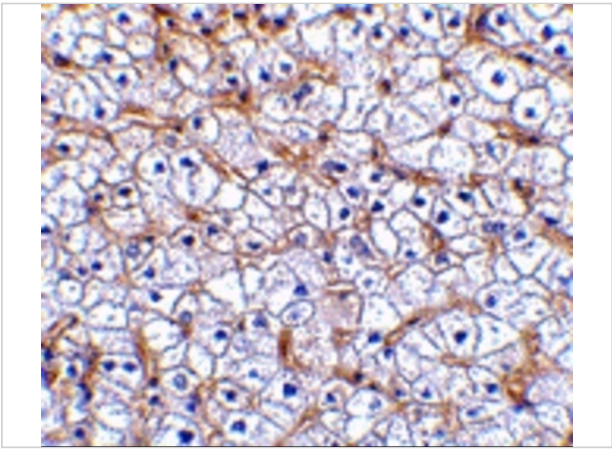
### Properties

Purification	Fn14 Antibody is affinity chromatography purified via peptide column.
Clonality	Polyclonal
Isotype	IgG
Physical State	Liquid
Buffer	Fn14 Antibody is supplied in PBS containing 0.02% sodium azide.
Concentration	1 mg/mL
Storage Conditions	Fn14 antibody can be stored at 4°C for three months and -20°C, stable for up to one year. As with all antibodies care should be taken to avoid repeated freeze thaw cycles. Antibodies should not be exposed to prolonged high temperatures.



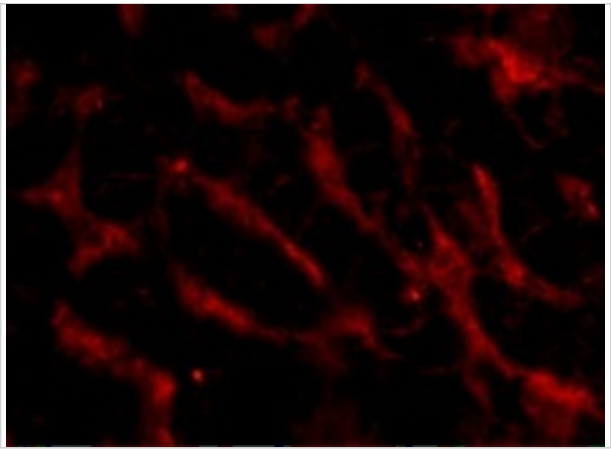
**Fn14 Antibody 1**

Western blot analysis of Fn14 in HepG2 cells with Fn14 antibody at (A) 2 and (B) 4  $\mu\text{g/mL}$ .



**Fn14 Antibody 2**

Immunohistochemistry of Fn14 in human liver tissue with Fn14 antibody at 2.5  $\mu\text{g/mL}$ .



**Fn14 Antibody 3**

Immunofluorescence of Fn14 in Human Liver cells with Fn14 antibody at 20  $\mu\text{g/mL}$ .

**Disclaimer**

<b>Disclaimer</b>	Optimal dilutions/concentrations should be determined by the end user. The information provided is a guideline for product use. This product is for research use only.
-------------------	--

For research use only. For additional information, visit ProSci's [Terms and Conditions Page](#).