

MALT1 Antibody

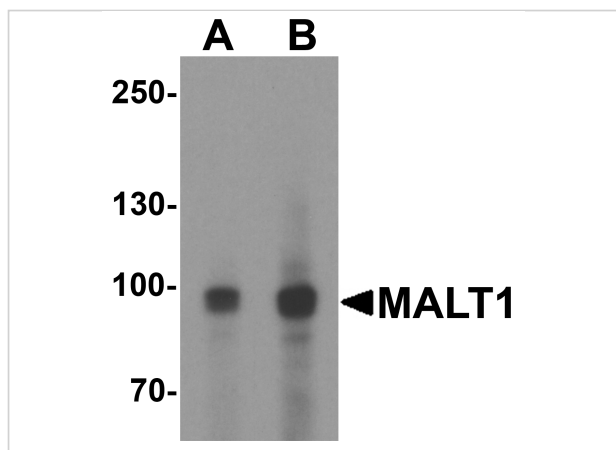
CATALOG NUMBER: 8097

Specifications

Host Species	Rabbit
Species Reactivity	Human, Mouse, Rat
Immunogen	MALT1 antibody was raised against an 18 amino acid peptide near the carboxy terminus of human MALT1. The immunogen is located within amino acids 630 - 680 of MALT1.
Conjugate	Unconjugated
Tested Applications	ELISA, IF, IHC-P, WB
User Note	Optimal dilutions for each application to be determined by the researcher.
Specificity	MALT1 antibody is human, mouse and rat reactive. At least two isoforms of MALT1 are known to exist; this antibody will detect both isoforms.
Predicted Molecular Weight	Predicted: 91 kDa Observed: 96 kDa

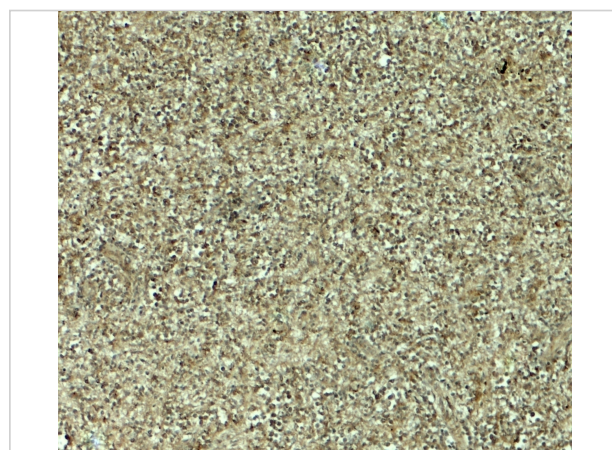
Properties

Purification	MALT1 antibody is affinity chromatography purified via peptide column.
Clonality	Polyclonal
Isotype	IgG
Physical State	Liquid
Buffer	MALT1 antibody is supplied in PBS containing 0.02% sodium azide.
Concentration	1 mg/mL
Storage Conditions	MALT1 antibody can be stored at 4°C for three months and -20°C, stable for up to one year.



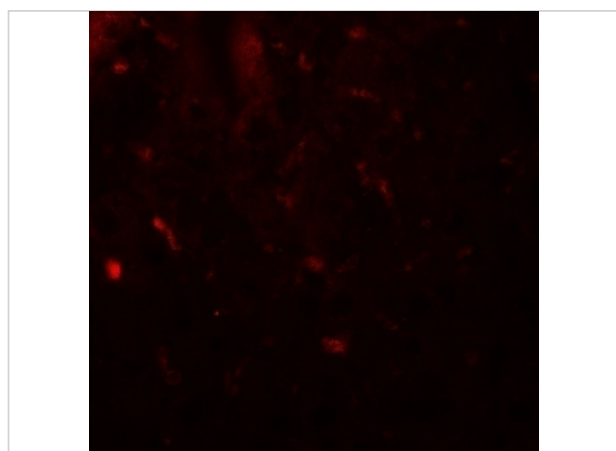
MALT1 Antibody 1

Western blot analysis of MALT1 in EL4 cell lysate with MALT1 antibody at (A) 1 and (2) $\mu\text{g}/\text{mL}$.



MALT1 Antibody 2

Immunohistochemistry of MALT1 in human spleen tissue with MALT1 antibody at 5 $\mu\text{g}/\text{mL}$.



MALT1 Antibody 3

Immunofluorescence of MALT1 in human spleen tissue with MALT1 antibody at 20 $\mu\text{g}/\text{mL}$.

Disclaimer

Disclaimer

Optimal dilutions/concentrations should be determined by the end user. The information provided is a guideline for product use. This product is for research use only.

For research use only. For additional information, visit ProSci's [Terms and Conditions Page](#).