

RHOT1 Antibody

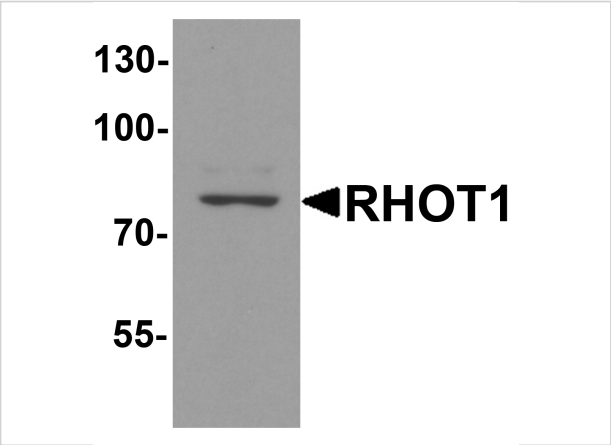
CATALOG NUMBER: 8027

Specifications

Host Species	Rabbit
Species Reactivity	Human, Mouse, Rat
Homology	Predicted species reactivity based on immunogen sequence: Bovine: (100%), Chicken: (81%)
Immunogen	RHOT1 antibody was raised against a 15 amino acid peptide near the amino terminus of human RHOT1. The immunogen is located within amino acids 40 - 90 of RHOT1.
Conjugate	Unconjugated
Tested Applications	ELISA, IF, IHC-P, WB
User Note	Optimal dilutions for each application to be determined by the researcher.
Specificity	RHOT1 antibody is human, mouse and rat reactive. At least three isoforms of RHOT1 are known to exist; this antibody will detect all three isoforms.
Predicted Molecular Weight	Predicted: 76 kDa Observed: 78 kDa

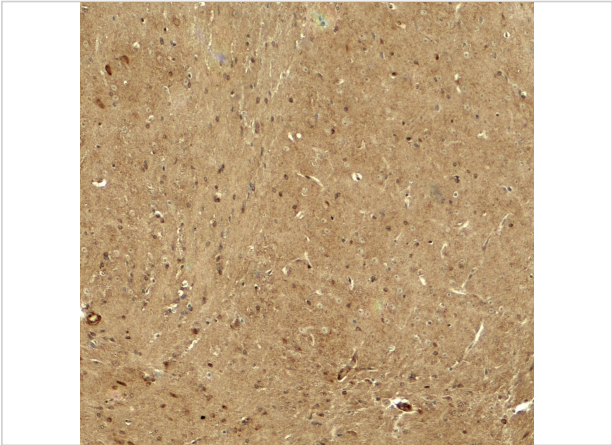
Properties

Purification	RHOT1 antibody is affinity chromatography purified via peptide column.
Clonality	Polyclonal
Isotype	IgG
Physical State	Liquid
Buffer	RHOT1 antibody is supplied in PBS containing 0.02% sodium azide.
Concentration	1 mg/mL
Storage Conditions	RHOT1 antibody can be stored at 4°C for three months and -20°C, stable for up to one year.



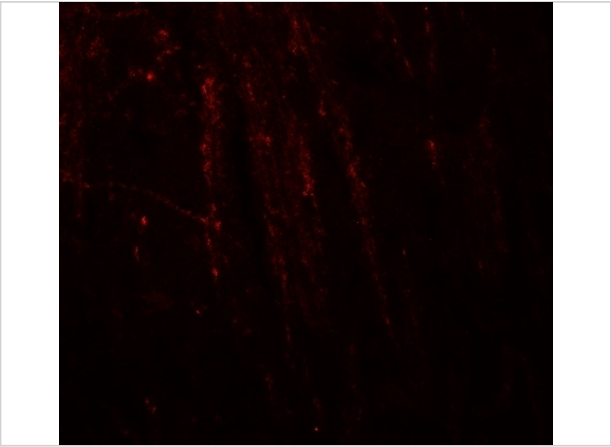
RHOT1 Antibody 1

Western blot analysis of RHOT1 in rat brain tissue lysate with RHOT1 antibody at 1 µg/ml.



RHOT1 Antibody 2

Immunohistochemistry of RHOT in mouse brain tissue with RHOT antibody at 5 µg/ml.



RHOT1 Antibody 3

Immunofluorescence of RHOT in mouse brain tissue with RHOT antibody at 20 µg/ml.

Disclaimer

Disclaimer	Optimal dilutions/concentrations should be determined by the end user. The information provided is a guideline for product use. This product is for research use only.
-------------------	--

For research use only. For additional information, visit ProSci's [Terms and Conditions Page](#).