

WWC1 Antibody

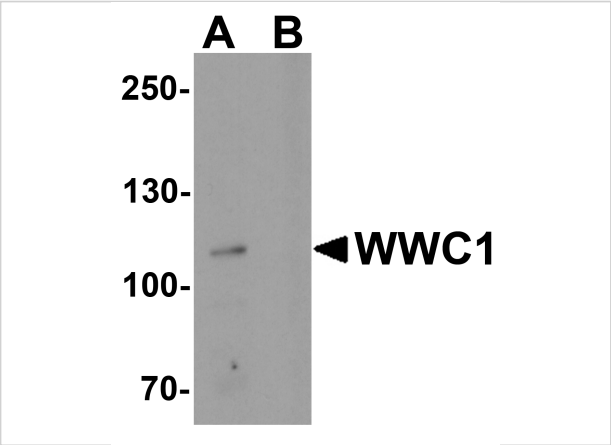
CATALOG NUMBER: 7991

Specifications

Host Species	Rabbit
Species Reactivity	Human, Mouse, Rat
Immunogen	WWC1 antibody was raised against an 18 amino acid peptide near the amino terminus of human WWC1. The immunogen is located within amino acids 60 - 110 of WWC1.
Conjugate	Unconjugated
Tested Applications	ELISA, IF, IHC-P, WB
User Note	Optimal dilutions for each application to be determined by the researcher.
Specificity	WWC1 antibody is human, mouse and rat reactive. At least three isoforms of WWC1 are known to exist; this antibody will detect all three isoforms.
Predicted Molecular Weight	Predicted: 123 kDa Observed: 110 kDa

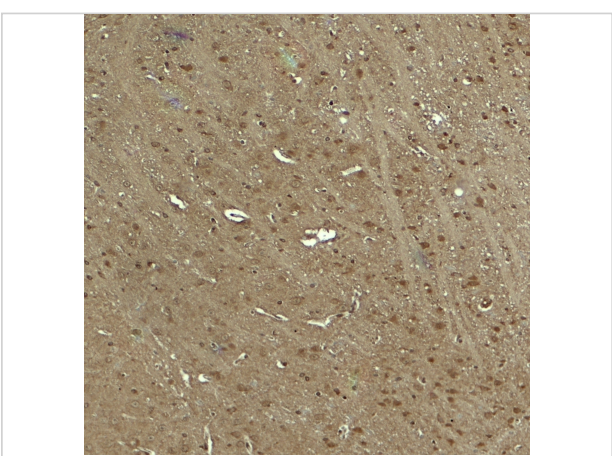
Properties

Purification	WWC1 antibody is affinity chromatography purified via peptide column.
Clonality	Polyclonal
Isotype	IgG
Physical State	Liquid
Buffer	WWC1 antibody is supplied in PBS containing 0.02% sodium azide.
Concentration	1 mg/mL
Storage Conditions	WWC1 antibody can be stored at 4°C for three months and -20°C, stable for up to one year.



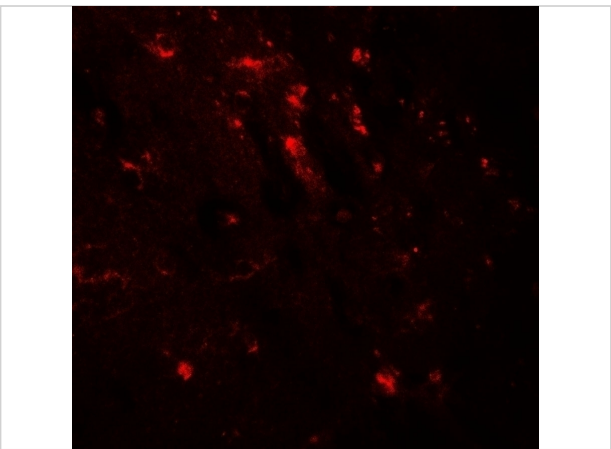
WWC1 Antibody 1

Western blot analysis of WWC1 in human brain tissue lysate with WWC1 antibody at 1 µg/ml in (A) the absence and (B) the presence of blocking peptide.



WWC1 Antibody 2

Immunohistochemistry of WWC1 in mouse brain tissue with WWC1 antibody at 5 µg/ml.



WWC1 Antibody 3

Immunofluorescence of WWC1 in mouse brain tissue with WWC1 antibody at 20 µg/ml.

Disclaimer

Disclaimer	Optimal dilutions/concentrations should be determined by the end user. The information provided is a guideline for product use. This product is for research use only.
------------	--

For research use only. For additional information, visit ProSci's [Terms and Conditions Page](#).