

MIB1 Antibody

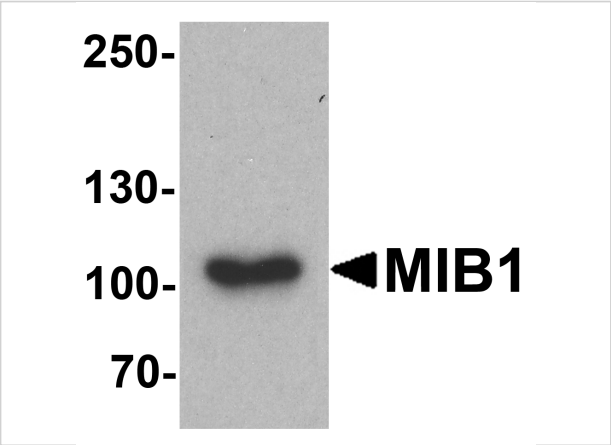
CATALOG NUMBER: 7781

Specifications

Host Species	Rabbit
Species Reactivity	Human, Mouse, Rat
Immunogen	MIB1 antibody was raised against a 19 amino acid peptide near the carboxy terminus of human MIB1. The immunogen is located within amino acids 920 - 970 of MIB1.
Conjugate	Unconjugated
Tested Applications	ELISA, ICC, IF, WB
User Note	Optimal dilutions for each application to be determined by the researcher.
Specificity	MIB1 antibody is human, mouse and rat reactive. At least three isoforms of MIB1 are known to exist.
Predicted Molecular Weight	Predicted: 89, 102, 111 kDa Observed: 103 kDa

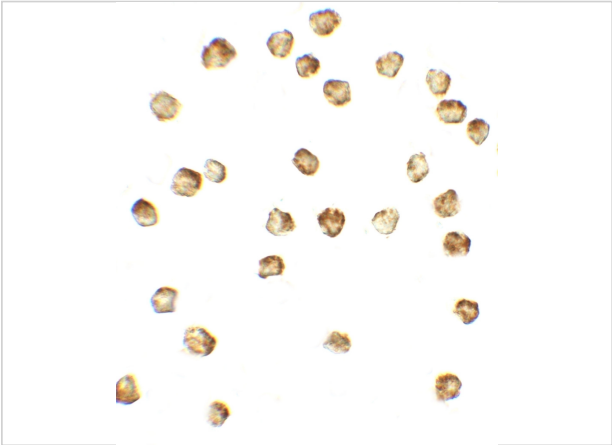
Properties

Purification	MIB1 antibody is affinity chromatography purified via peptide column.
Clonality	Polyclonal
Isotype	IgG
Physical State	Liquid
Buffer	MIB1 Antibody is supplied in PBS containing 0.02% sodium azide.
Concentration	1 mg/mL
Storage Conditions	MIB1 antibody can be stored at 4°C for three months and -20°C, stable for up to one year.



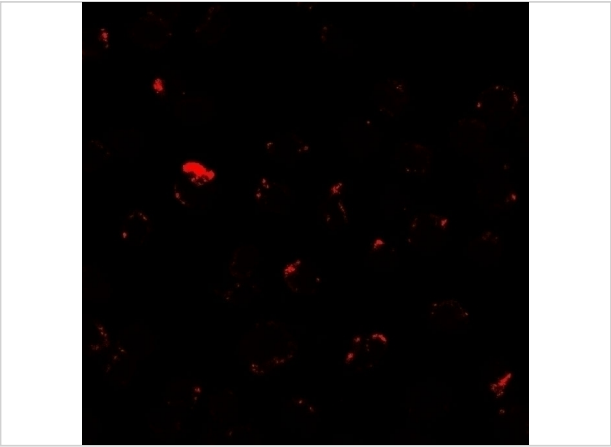
MIB1 Antibody 1

Western blot analysis of MIB1 in A431 cell lysate with MIB1 antibody at 1 µg/ml.



MIB1 Antibody 2

Immunocytochemistry of MIB1 in A431 cells with MIB1 antibody at 5 µg/mL.



MIB1 Antibody 3

Immunofluorescence of MIB1 in A431 cells with MIB1 antibody at 20 µg/mL.

Disclaimer

Disclaimer	Optimal dilutions/concentrations should be determined by the end user. The information provided is a guideline for product use. This product is for research use only.
------------	--

For research use only. For additional information, visit ProSci's [Terms and Conditions Page](#).