

HMGB1 Antibody

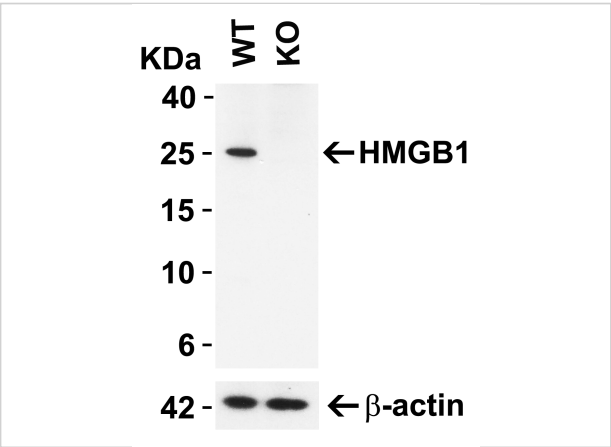
CATALOG NUMBER: 7715

Specifications

Host Species	Rabbit
Species Reactivity	Human, Mouse, Rat
Homology	Predicted species reactivity based on immunogen sequence: Chicken: (100%), Pig: (100%)
Immunogen	Anti-HMGB1 antibody (7715) was raised against a peptide corresponding to 19 amino acids near the center of human HMGB1. The immunogen is located within 70-120 amino acids of HMGB1.
Conjugate	Unconjugated
Tested Applications	ELISA, IF, IHC-P, WB
User Note	Optimal dilutions for each application to be determined by the researcher.
Specificity	HMGB1 antibody is human, mouse and rat reactive.
Predicted Molecular Weight	Predicted: 25 kDa Observed: 25 kDa

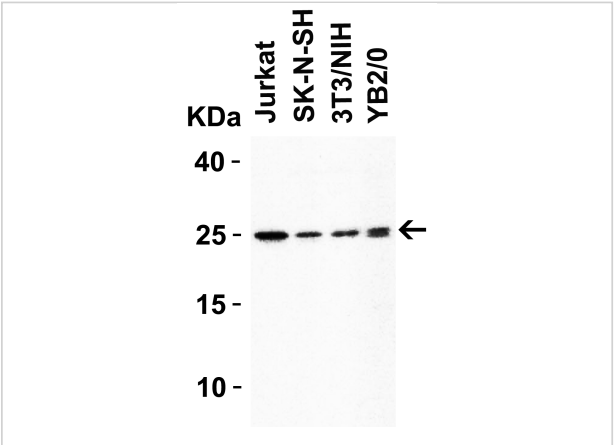
Properties

Purification	HMGB1 antibody is affinity chromatography purified via peptide column.
Clonality	Polyclonal
Isotype	IgG
Physical State	Liquid
Buffer	HMGB1 Antibody is supplied in PBS containing 0.02% sodium azide.
Concentration	1 mg/mL
Storage Conditions	HMGB1 antibody can be stored at 4°C for three months and -20°C, stable for up to one year.



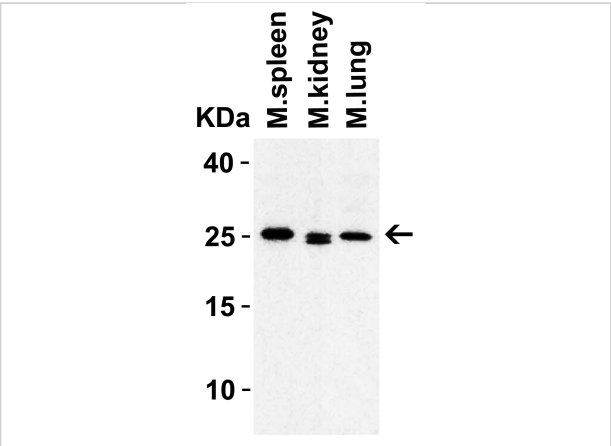
HMGB1 Antibody 1

Figure 1 KO Validation in HeLa Cells
 Loading: 10 μ g of HeLa WT cell lysates or HMGB1 KO cell lysates.
 Antibodies: HMGB1 (0.5 μ g/mL) and beta-actin 3779 (1 μ g/mL), 1 h incubati...



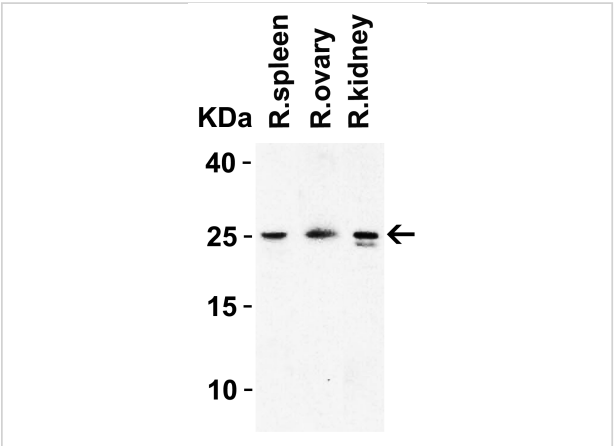
HMGB1 Antibody 2

Figure 2 WB Validation in Human, Mouse and Rat Cell Lines
 Loading: 15 μ g of lysate Antibodies: HMGB1 7715, 1 μ g/mL, 1 h incubation at RT in 5% NFDm/TBST. Secondary: Goat Ant...



HMGB1 Antibody 3

Figure 3 WB Validation in Mouse Tissues
 Loading: 15 μ g of lysate Antibodies: HMGB1 7715, 1 μ g/mL, 1 h incubation at RT in 5% NFDm/TBST. Secondary: Goat Anti-Rabbit IgG HRP ...



HMGB1 Antibody 4

Figure 4 WB Validation in Rat Tissues
 Loading: 15 μ g of lysate Antibodies: HMGB1 7715, 1 μ g/mL, 1 h incubation at RT in 5% NFDm/TBST. Secondary: Goat Anti-Rabbit IgG HRP co...

Disclaimer

Disclaimer	Optimal dilutions/concentrations should be determined by the end user. The information provided is a guideline for product use. This product is for research use only.
------------	--

For research use only. For additional information, visit ProSci's [Terms and Conditions Page](#).