

FHIT Antibody

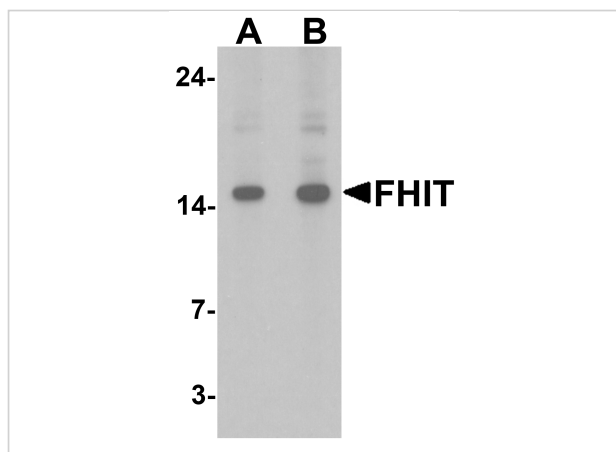
CATALOG NUMBER: 7455

Specifications

Host Species	Rabbit
Species Reactivity	Human, Mouse
Homology	Predicted species reactivity based on immunogen sequence: Bovine: (88%), Rat: (72%)
Immunogen	FHIT antibody was raised against an 18 amino acid peptide near the carboxy terminus of human FHIT. The immunogen is located within the last 50 amino acids of FHIT .
Conjugate	Unconjugated
Tested Applications	ELISA, IF, WB
User Note	Optimal dilutions for each application to be determined by the researcher.
Specificity	FHIT antibody is human and mouse reactive.
Predicted Molecular Weight	Predicted: 16 kDa Observed: 15kDa

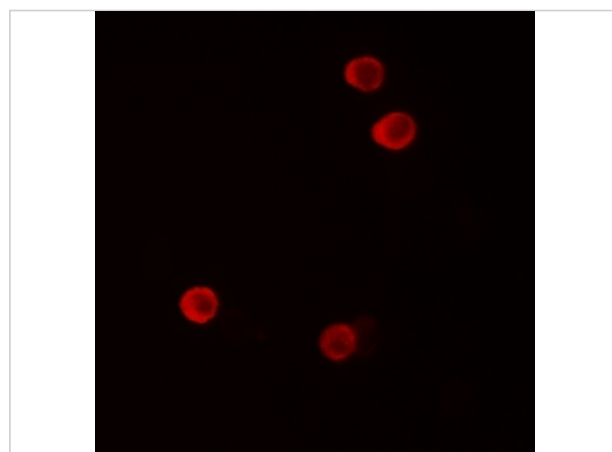
Properties

Purification	FHIT Antibody is affinity chromatography purified via peptide column.
Clonality	Polyclonal
Isotype	IgG
Physical State	Liquid
Buffer	FHIT Antibody is supplied in PBS containing 0.02% sodium azide.
Concentration	1 mg/mL
Storage Conditions	FHIT antibody can be stored at 4°C for three months and -20°C, stable for up to one year.



FHIT Antibody 1

Western blot analysis of FHIT in HeLa cell lysate with FHIT antibody at (A) 1 and (B) 2 $\mu\text{g}/\text{mL}$.



FHIT Antibody 2

Immunofluorescence of FHIT in HeLa cells with FHIT antibody at 5 $\mu\text{g}/\text{mL}$.

Disclaimer

Disclaimer

Optimal dilutions/concentrations should be determined by the end user. The information provided is a guideline for product use. This product is for research use only.

For research use only. For additional information, visit ProSci's [Terms and Conditions Page](#).