

KHDC1 Antibody

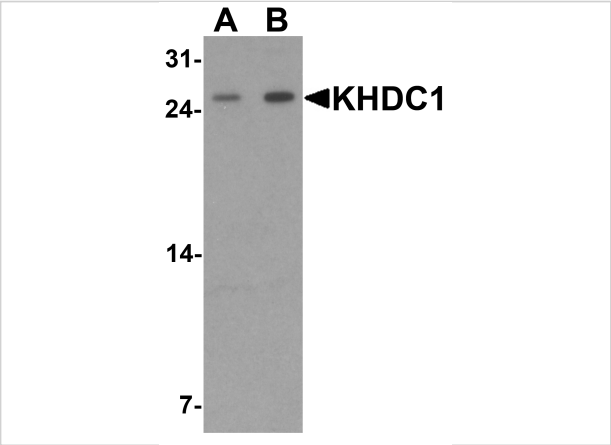
CATALOG NUMBER: 7423

Specifications

Host Species	Rabbit
Species Reactivity	Human, Mouse, Rat
Immunogen	KHDC1 antibody was raised against a 15 amino acid peptide near the amino terminus of human KHDC1. The immunogen is located within amino acids 30 - 80 of KHDC1.
Conjugate	Unconjugated
Tested Applications	ELISA, IHC-P, WB
User Note	Optimal dilutions for each application to be determined by the researcher.
Specificity	KHDC1 antibody is human, mouse and rat reactive. At least three isoforms of KHDC1 are known to exist; this antibody will only detect the longest isoform.
Predicted Molecular Weight	Predicted: 18 kDa Observed: 26 kDa

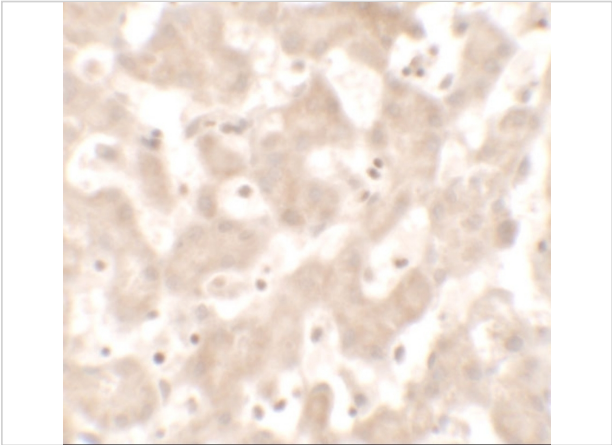
Properties

Purification	KHDC1 Antibody is affinity chromatography purified via peptide column.
Clonality	Polyclonal
Isotype	IgG
Physical State	Liquid
Buffer	KHDC1 Antibody is supplied in PBS containing 0.02% sodium azide.
Concentration	1 mg/mL
Storage Conditions	KHDC1 antibody can be stored at 4°C for three months and -20°C, stable for up to one year.



KHDC1 Antibody 1

Western blot analysis of KHDC1 in rat liver tissue lysate with KHDC1 antibody at (A) 0.5 and (B) 1 µg/mL.



KHDC1 Antibody 2

Immunohistochemistry of KHDC1 in human liver tissue with KHDC1 antibody at 5 µg/mL.

Disclaimer

Disclaimer	Optimal dilutions/concentrations should be determined by the end user. The information provided is a guideline for product use. This product is for research use only.
-------------------	--

For research use only. For additional information, visit ProSci's [Terms and Conditions Page](#).