

CRTC2 Antibody

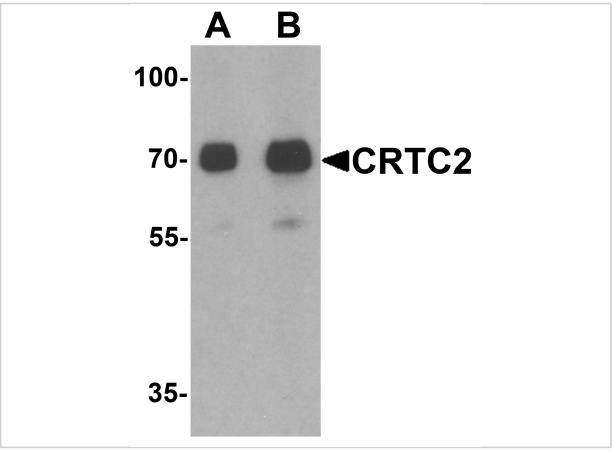
CATALOG NUMBER: 7325

Specifications

Host Species	Rabbit
Species Reactivity	Human, Mouse, Rat
Homology	Predicted species reactivity based on immunogen sequence: Bovine: (94%)
Immunogen	CRTC2 antibody was raised against a 16 amino acid peptide near the carboxy terminus of human CRTC2. The immunogen is located within the last 50 amino acids of CRTC2.
Conjugate	Unconjugated
Tested Applications	ELISA, IF, IHC-P, WB
User Note	Optimal dilutions for each application to be determined by the researcher.
Specificity	Multiple isoforms of CRTC2 are known to exist. CRTC2 antibody is predicted to not cross-react with CRTC1.
Predicted Molecular Weight	Predicted: 67, 76 kDa Observed: 70 kDa

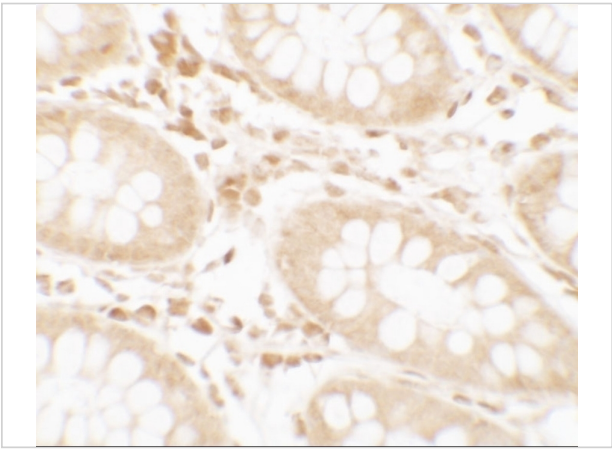
Properties

Purification	CRTC2 Antibody is affinity chromatography purified via peptide column.
Clonality	Polyclonal
Isotype	IgG
Physical State	Liquid
Buffer	CRTC2 Antibody is supplied in PBS containing 0.02% sodium azide.
Concentration	1 mg/mL
Storage Conditions	CRTC2 antibody can be stored at 4°C for three months and -20°C, stable for up to one year.



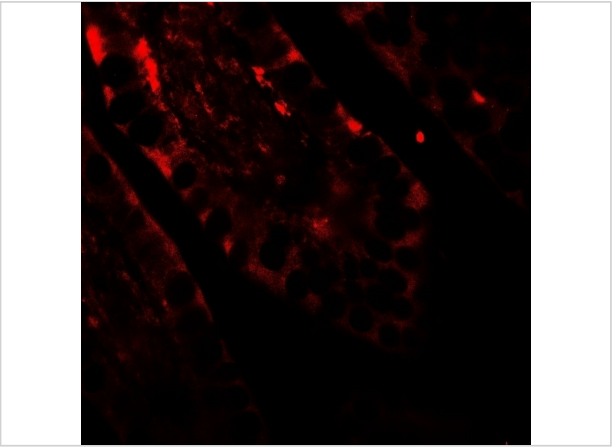
CRTC2 Antibody 1

Western blot analysis of CRTC2 in human small intestine tissue lysate with CRTC2 antibody at (A) 0.5 and (B) 1 $\mu\text{g/mL}$.



CRTC2 Antibody 2

Immunohistochemistry of CRTC2 in human small intestine tissue with CRTC2 antibody at 2.5 $\mu\text{g/mL}$.



CRTC2 Antibody 3

Immunofluorescence of CRTC2 in human small intestine tissue with CRTC2 antibody at 20 $\mu\text{g/mL}$.

Disclaimer

Disclaimer	Optimal dilutions/concentrations should be determined by the end user. The information provided is a guideline for product use. This product is for research use only.
------------	------------------------------------------------------------------------------------------------------------------------------------------------------------------------

For research use only. For additional information, visit ProSci's [Terms and Conditions Page](#).