

## MTERFD3 Antibody

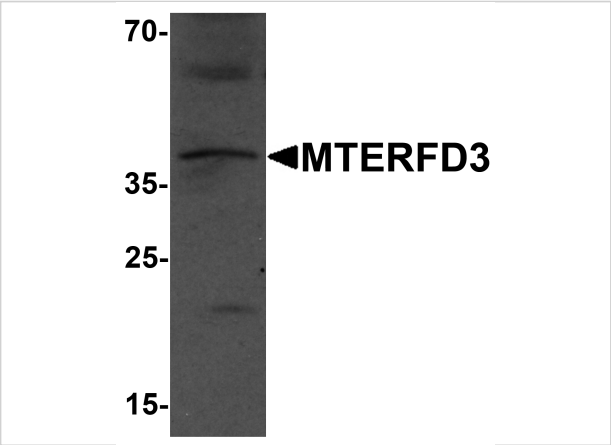
CATALOG NUMBER: 7285

### Specifications

<b>Host Species</b>	Rabbit
<b>Species Reactivity</b>	Human, Mouse
<b>Homology</b>	Predicted species reactivity based on immunogen sequence: Rat: (76%)
<b>Immunogen</b>	MTERFD3 antibody was raised against an 18 amino acid peptide near the amino terminus of human MTERFD3 . The immunogen is located within amino acids 20 - 70 of MTERFD3.
<b>Conjugate</b>	Unconjugated
<b>Tested Applications</b>	ELISA, IHC-P, WB
<b>User Note</b>	Optimal dilutions for each application to be determined by the researcher.
<b>Specificity</b>	MTERFD3 antibody is predicted to not cross-react with other MTERFD protein family members.
<b>Predicted Molecular Weight</b>	Predicted: 42 kDa Observed: 40 kDa

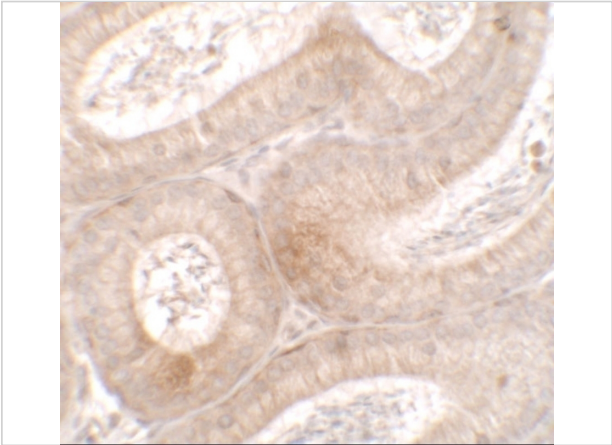
### Properties

<b>Purification</b>	MTERFD3 Antibody is affinity chromatography purified via peptide column.
<b>Clonality</b>	Polyclonal
<b>Isotype</b>	IgG
<b>Physical State</b>	Liquid
<b>Buffer</b>	MTERFD3 Antibody is supplied in PBS containing 0.02% sodium azide.
<b>Concentration</b>	1 mg/mL
<b>Storage Conditions</b>	MTERFD3 antibody can be stored at 4°C for three months and -20°C, stable for up to one year.



MTERFD3 Antibody 1

Western blot analysis of MTERFD3 in human testis tissue lysate with MTERFD3 antibody at 1 µg/mL.



MTERFD3 Antibody 2

Immunohistochemistry of MTERFD3 in mouse testis tissue with MTERFD3 antibody at 2.5 µg/mL.

Disclaimer

Disclaimer	Optimal dilutions/concentrations should be determined by the end user. The information provided is a guideline for product use. This product is for research use only.
------------	--

For research use only. For additional information, visit ProSci's [Terms and Conditions Page](#).