

## RC3H1 Antibody

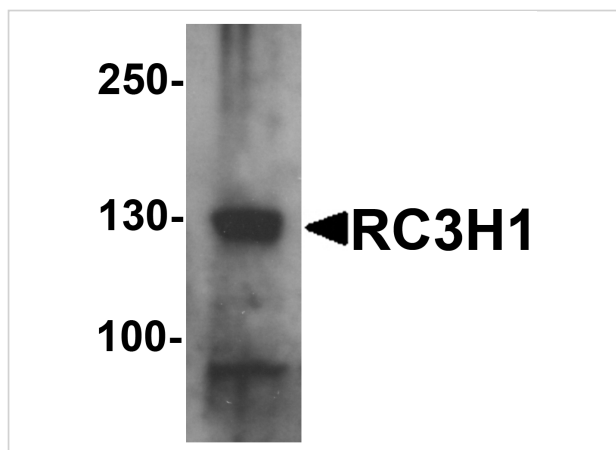
CATALOG NUMBER: 7251

### Specifications

Host Species	Rabbit
Species Reactivity	Human, Mouse, Rat
Immunogen	Rabbit polyclonal RC3H1 antibody was raised against an 18 amino acid peptide near the carboxy terminus of human RC3H1. The immunogen is located within amino acids 1040 - 1090 of RC3H1.
Conjugate	Unconjugated
Tested Applications	ELISA, IF, IHC-P, WB
User Note	Optimal dilutions for each application to be determined by the researcher.
Specificity	At least three isoforms of RC3H1 are known to exist; this antibody will detect all three isoforms.
Predicted Molecular Weight	125 kDa

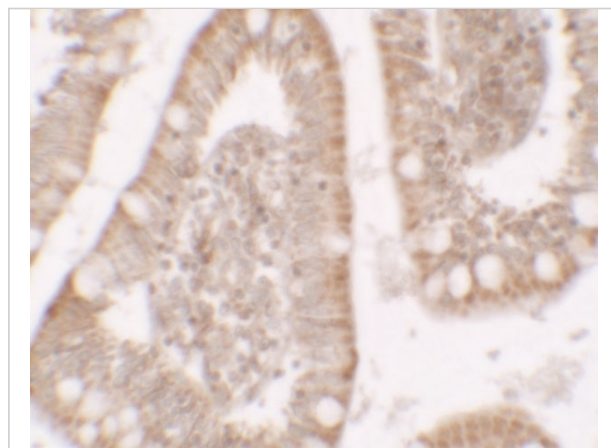
### Properties

Purification	RC3H1 Antibody is affinity chromatography purified via peptide column.
Clonality	Polyclonal
Isotype	IgG
Physical State	Liquid
Buffer	RC3H1 Antibody is supplied in PBS containing 0.02% sodium azide.
Concentration	1 mg/mL
Storage Conditions	RC3H1 antibody can be stored at 4°C for three months and -20°C, stable for up to one year.



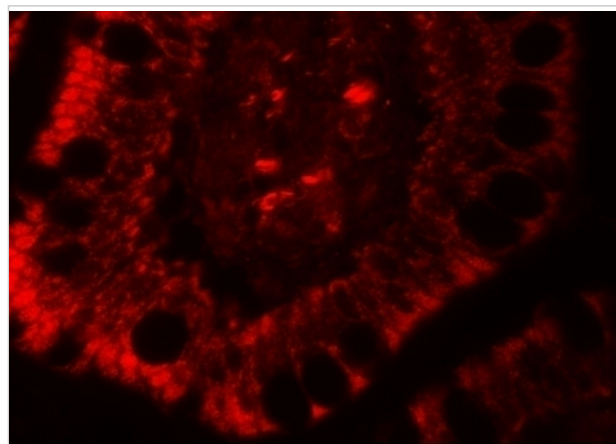
### RC3H1 Antibody 1

Western blot analysis of RC3H1 in HeLa cell lysate with RC3H1 antibody at 1 µg/mL



### RC3H1 Antibody 2

Immunohistochemistry of RC3H1 in human small intestine tissue with RC3H1 antibody at 5 µg/mL



### RC3H1 Antibody 3

Immunofluorescence of RC3H1 in human small intestine tissue with RC3H1 antibody at 20 µg/mL

## Disclaimer

#### Disclaimer

Optimal dilutions/concentrations should be determined by the end user. The information provided is a guideline for product use. This product is for research use only.

For research use only. For additional information, visit ProSci's [Terms and Conditions Page](#).