

## CCNT1 Antibody

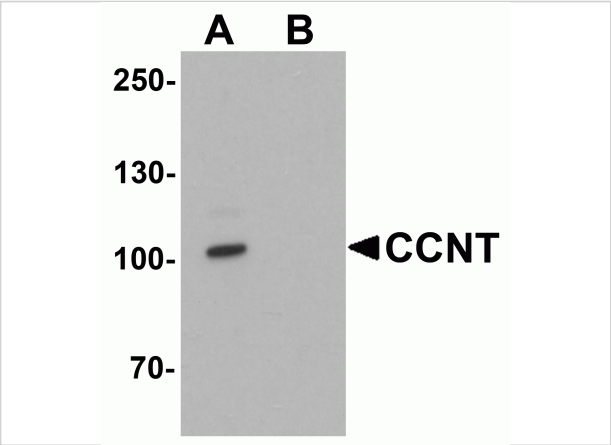
CATALOG NUMBER: 7223

### Specifications

Host Species	Rabbit
Species Reactivity	Human, Mouse, Rat
Immunogen	Rabbit polyclonal CCNT1 antibody was raised against an 18 amino acid peptide near the carboxy terminus of human CCNT1. The immunogen is located within the last 50 amino acids of CCNT1.
Conjugate	Unconjugated
Tested Applications	ELISA, IF, IHC-P, WB
User Note	Optimal dilutions for each application to be determined by the researcher.
Predicted Molecular Weight	Predicted: 80 kDa

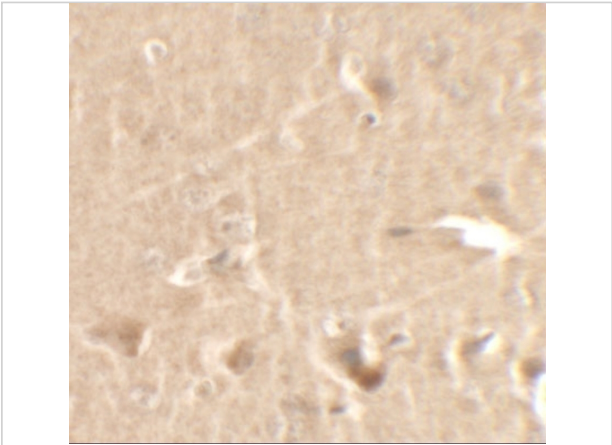
### Properties

Purification	CCNT1 Antibody is affinity chromatography purified via peptide column.
Clonality	Polyclonal
Isotype	IgG
Physical State	Liquid
Buffer	CCNT1 Antibody is supplied in PBS containing 0.02% sodium azide.
Concentration	1 mg/mL
Storage Conditions	CCNT1 antibody can be stored at 4°C for three months and -20°C, stable for up to one year.



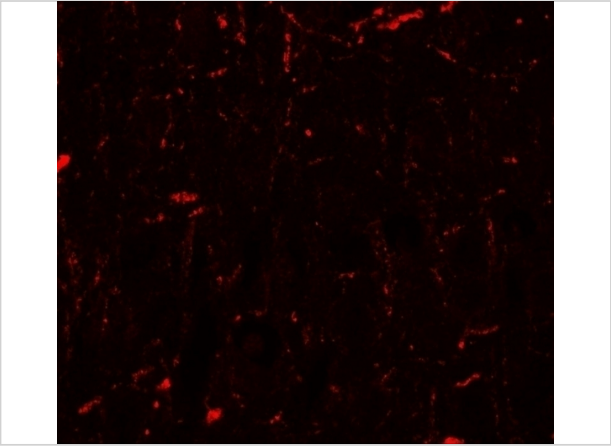
CCNT1 Antibody 1

Western blot analysis of CCNT1 in rat brain tissue lysate with CCNT1 antibody at 1 µg/mL in (A) the absence and (B) the presence of blocking peptide.



CCNT1 Antibody 2

Immunohistochemistry of CCNT1 in rat brain tissue with CCNT1 antibody at 2.5 µg/mL.



CCNT1 Antibody 3

Immunofluorescence of CCNT1 in rat brain tissue with CCNT1 antibody at 20 µg/mL.

Disclaimer

Disclaimer	Optimal dilutions/concentrations should be determined by the end user. The information provided is a guideline for product use. This product is for research use only.
------------	--

For research use only. For additional information, visit ProSci's [Terms and Conditions Page](#).