

CARM1 Antibody

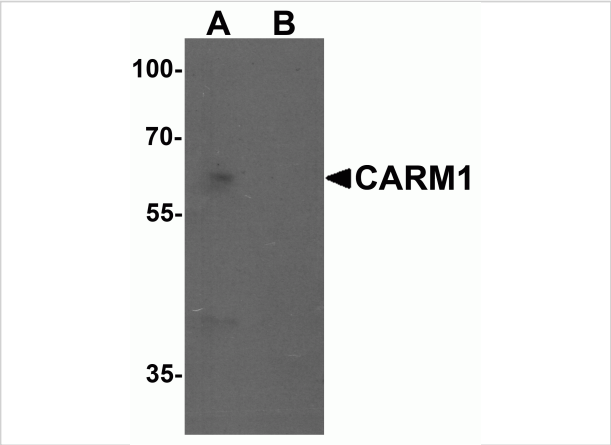
CATALOG NUMBER: 7219

Specifications

Host Species	Rabbit
Species Reactivity	Human, Mouse, Rat
Immunogen	Rabbit polyclonal CARM1 antibody was raised against a 19 amino acid peptide near the amino terminus of human CARM1. The immunogen is located within amino acids 470 - 520 of CARM1.
Conjugate	Unconjugated
Tested Applications	ELISA, IF, WB
User Note	Optimal dilutions for each application to be determined by the researcher.
Predicted Molecular Weight	Predicted: 67 kDa

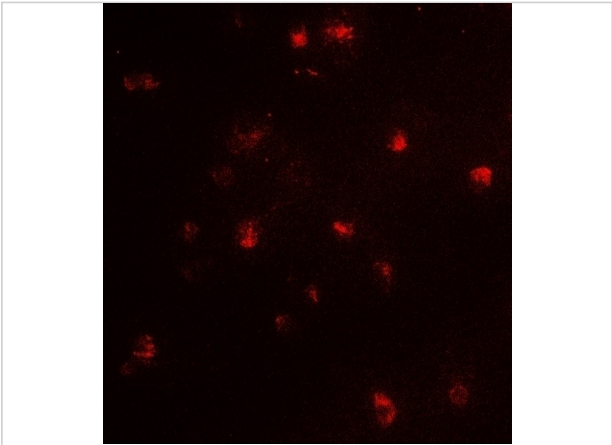
Properties

Purification	CARM1 Antibody is affinity chromatography purified via peptide column.
Clonality	Polyclonal
Isotype	IgG
Physical State	Liquid
Buffer	CARM1 Antibody is supplied in PBS containing 0.02% sodium azide.
Concentration	1 mg/mL
Storage Conditions	CARM1 antibody can be stored at 4°C for three months and -20°C, stable for up to one year.



CARM1 Antibody 1

Western blot analysis of CARM1 in Jurkat cell lysate with CARM1 antibody at 1 µg/mL in (A) the absence and (B) the presence of blocking peptide.



CARM1 Antibody 2

Immunofluorescence of CARM1 in Jurkat cells with CARM1 antibody at 5 µg/mL.

Disclaimer

Disclaimer	Optimal dilutions/concentrations should be determined by the end user. The information provided is a guideline for product use. This product is for research use only.
------------	--

For research use only. For additional information, visit ProSci's [Terms and Conditions Page](#).